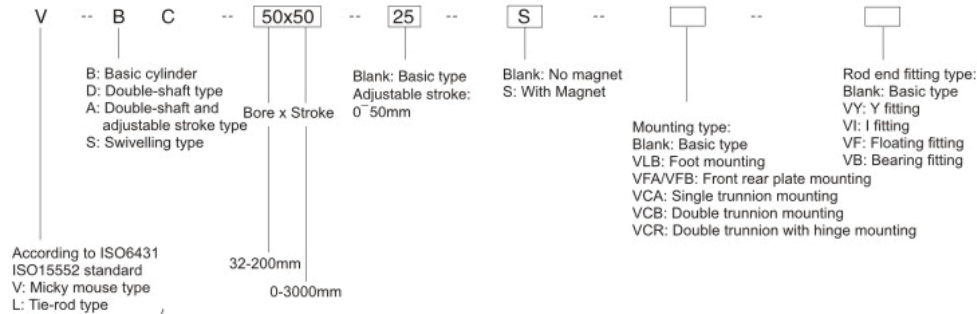


How to Order?



Order example :

- * V series mickey mouse type, double-shaft with adjustable stroke 20mm, 50mm bore, 100mm stroke, model: VAC 50X100-20
- * L series tie-rod type, basic type, 32mm bore, 50mm stroke, with magnet, model: LBC 32X50-S

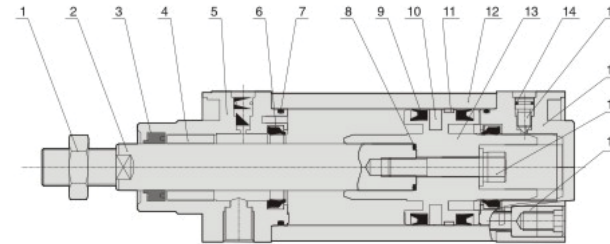
Product Features

- * Provided with adjustable cushion on both end covers to make sure the cylinder works very smoothly, safely and with low noise.
- * With self lubricating bearing, the piston rod is lubrication free.
- * Magnet and sufficient fixing styles are available.

Specifications

Bore size(mm)	32	40	50	63	80	100	125	160	200
Acting type	Double acting								
Working medium	Clean Air (25 µm filtration)								
Mounting type	VFA VFB VCA VCB VCR VLB								
Rod end fitting type	VY VI VF VB								
Range of working pressure (Bar)	1-9.0								
Guaranteed pressure (Bar)	13.5								
Working temperature (°C)	-5 ~ 70								
Speed range (mm/s)	50 ~ 800								
Cushion type	Adjustable cushion								
Cushion stroke (mm)	24				32				
Port size	G1/8	G1/4	G3/8		G1/2		G3/4		

Internal Structure



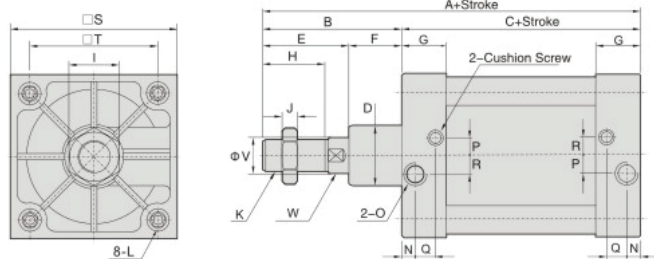
NO	Designation
1	Nut
2	Piston rod
3	Piston rod seal
4	Self lubricating bearing
5	Head cover
6	Cushion seal
7	Cover O-ring
8	Piston rod O-ring
9	Piston seal
10	Magnet (optional)
11	Wear ring
12	Barrel
13	Piston
14	O-ring
15	Cushion needle
16	Rear cover
17	Hexagon nut
18	Profile bolt

Main Parts Material

Part name	Material
Head cover	Aluminum alloy
Rear cover	Aluminum alloy
Piston	Aluminum alloy
Piston rod	S45C hard chrome carbon steel
Barrel	Hard anodized aluminum
Piston rod seal	NBR
Cushion seal	NBR
Piston rod O-ring	NBR
Cover O-ring	NBR
Piston seal	NBR
Wear ring	PA66
Self lubricating bearing	PTFE+Brass
Magnet (optional)	RbFeb
Cushion needle	Brass
Hexagon nut	Carbon steel
Nut	Carbon steel
Cover connection screw	Carbon steel
Tie rod	Carbon steel

Main Dimensions

VBC $\phi 32$ $\phi 200$

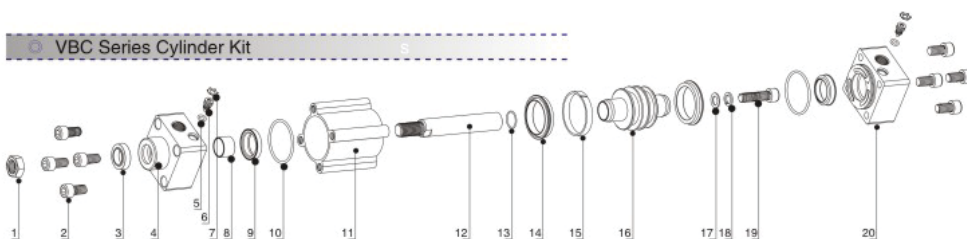


Bore/Sign	A	B	C	D	E	F	G	H	I	J	K
32	142	48	94	30	32	16	27.5	22	17	6	M10x1.25
40	159	54	105	35	36	18	29	24	19	7	M12x1.25
50	175	69	106	40	44	25	30	32	24	8	M16x1.5
63	190	69	121	45	44	25	31	32	24	8	M16x1.5
80	214	86	128	45	56	30	35	40	30	10	M20x1.5
100	229	91	138	55	59	32	36	40	30	10	M20x1.5
125	279	119	160	60	74	45	46	54	41	13.5	M27x2
160	332	152	180	65	94	58	50	72	55	18	M36x2
200	347	167	180	75	110	57	50	72	55	18	M36x2

Bore/Sign	L	N	O	P	Q	R	S	T	V	W
32	M6	13.5	G 1/8	4	7.5	7	47	32.5	12	10
40	M6	16	G 1/4	6	9.5	9	53	38	16	13
50	M8	18.5	G 1/4	8.5	6.7	9	65	46.5	20	17
63	M8	19	G 3/8	6	7.7	9	75	56.5	20	17
80	M10	19	G 3/8	10	5	13.5	95	72	25	22
100	M10	18	G 1/2	12.5	10	14.5	115	89	25	22
125	M12	23	G 1/2	14	12	14	140	110	32	27
160	M16	25	G 3/4	15	12	20	180	140	40	36
200	M16	25	G 3/4	15	12	20	220	175	40	36

* The dimension of the model with magnet is the same with the model without magnet

VBC Series Cylinder Kit

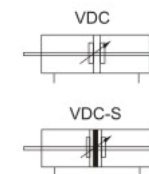


No	1	2	3	4	5	6	7	8	9	10	11
Designation	Nut	Cover connection screw	Piston rod seal	Head cover	O-ring	Adjustable screw	Block slip	Self Lubricating bearing	Cushion ring	O-ring	Barrel

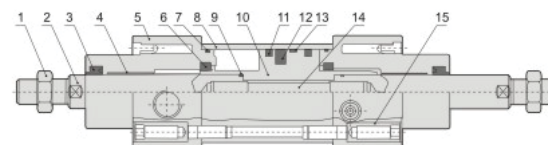
No	12	13	14	15	16	17	18	19	20
Designation	Piston rod	O-ring	Piston seal	Wear ring	Piston	Plain cushion	Spring cushion	Screw	Rear cover



VDC 63 x 125



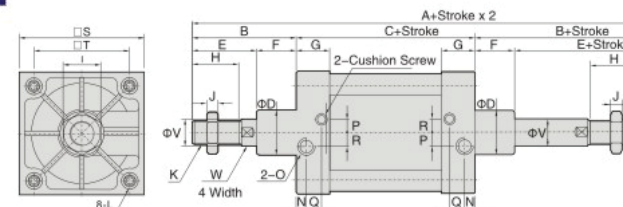
Internal Structure



NO	Designation
1	Nut
2	Piston rod
3	Piston rod seal
4	Self lubricating bearing
5	Front end cap
6	Cushion seal
7	Cover O-ring
8	Barrel
9	Piston rod O-ring
10	Piston
11	Piston seal
12	Magnet
13	Wear ring
14	Connection bolt
15	Cover connection screw

Main Dimensions

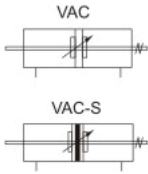
VDC $\phi 32$ $\phi 100$



Bore/Sign	A	B	C	D	E	F	G	H	I	J	K	L
32	190	48	94	30	32	16	27.5	22	17	6	M10x1.25	M6
40	213	54	105	35	36	18	29	24	19	7	M12x1.25	M6
50	244	69	106	40	44	25	30	32	24	8	M16x1.5	M8
63	259	69	121	45	44	25	31	32	24	8	M16x1.5	M8
80	300	86	128	45	56	30	35	40	30	10	M20x1.5	M10
100	320	91	138	55	59	32	36	40	30	10	M20x1.5	M10
125	398	119	160	60	74	45	46	54	41	13.5	M27x2	M12
160	484	152	180	65	94	58	50	72	55	18	M36x2	M16
200	514	167	180	75	110	57	50	72	55	18	M36x2	M16

Bore/Sign	N	O	P	Q	R	S	T	V	W
32	13.5	G 1/8	4	7.5	7	47	32.5	12	10
40	16	G 1/4	6	9.5	9	53	38	16	13
50	18.5	G 1/4	8.5	6.7	9	65	46.5	20	17
63	19	G 3/8	6	7.7	9	75	56.5	20	17
80	19	G 3/8	10	5	13.5	95	72	25	22
100	18	G 1/2	12.5	10	14.5	115	89	25	22
125	23	G 1/2	14	12	14	140	110	32	27
160	25	G 3/4	15	12	20	180	140	40	36
200	25	G 3/4	15	12	20	220	175	40	36

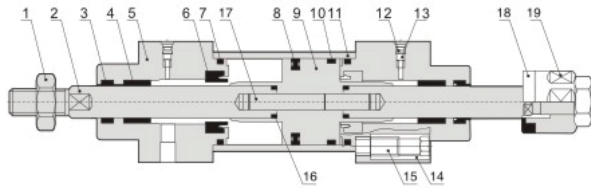
* The dimension of the model with magnet is the same with the model without magnet



VAC 63 x 125-50

Internal structure

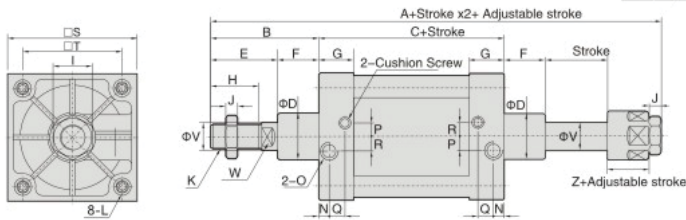
※ No magnet



NO	Designation
1	Nut
2	Piston rod
3	Piston rod seal
4	Self lubricating bearing
5	Head cover
6	Cushion O-ring
7	Cylinder body O-ring
8	Piston seal
9	Piston
10	Wear ring
11	Barrel
12	Anti-leakage O-ring
13	Adjustable cushion needle
14	Tie rod nut
15	Tie rod
16	Piston rod O-ring
17	Screw
18	Adjustable nut washer
19	Adjustable nut

Main dimensions

※ $\Phi 32$ $\Phi 200$



Bore/Sign	A	B	C	D	E	F	G	H	I	J	K	L
32	187	48	94	30	32	16	27.5	22	17	6	M10x1.25	M6
40	207	54	105	35	36	18	29	24	19	7	M12x1.25	M6
50	233	69	106	40	44	25	30	32	24	8	M16x1.5	M8
63	250	69	121	45	44	25	31	32	24	8	M16x1.5	M8
80	286	86	128	45	56	30	35	40	30	10	M20x1.5	M10
100	308	91	138	55	59	32	36	40	30	10	M20x1.5	M10
125	372.5	119	160	60	74	45	46	54	41	13.5	M27x2	M12
160	448	152	180	65	94	58	50	72	55	18	M36x2	M16
200	472	167	180	75	110	57	50	72	55	18	M36x2	M16

Bore/Sign	N	O	P	Q	R	S	T	V	W	Z
32	13.5	G 1/8	4	7.5	7	47	32.5	12	10	21
40	16	G 1/4	6	9.5	9	53	38	16	13	21
50	18.5	G 1/4	8.5	6.7	9	65	46.5	20	17	23
63	19	G 3/8	6	7.7	9	75	56.5	20	17	23
80	19	G 3/8	10	5	13.5	95	72	25	22	29
100	18	G 1/2	12.5	10	14.5	115	89	25	22	29
125	23	G 1/2	14	12	14	140	110	32	27	35
160	25	G 3/4	15	12	20	180	140	40	36	40
200	25	G 3/4	15	12	20	220	175	40	36	40

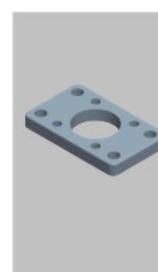
* The dimension of the model with magnet is the same with the model without magnet

Dimension of Mounting Accessories



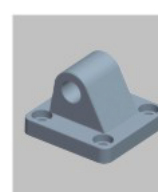
Dimension of VLB type

Bore/Sign	32	40	50	63	80	100	125	160	200
AA	158	179	190	209	248	258	290	340	380
AC	142	161	170	185	210	220	250	300	320
AD	8	9	10	12	19	19	20	20	30
AE	48	53	63	73	98	115	140	180	220
AF	32	36	45	50	63	75	90	115	135
AG	24	28	32	32	41	45	45	60	70
AH	32	36	45	50	63	71	90	115	135
AP	7	9	9	9	12	14	16	18	22
AT	5	5	5	5	5	5	8	8	9



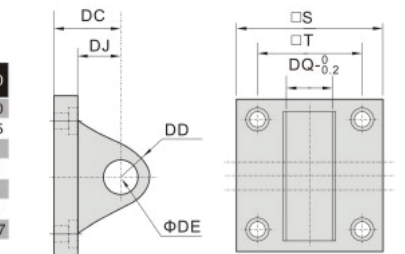
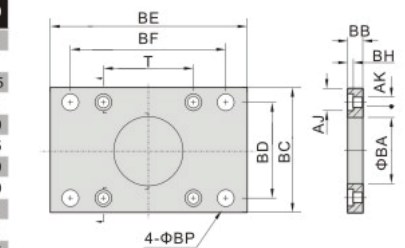
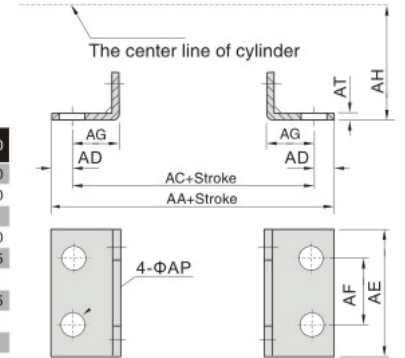
Dimension of VFA/VFB type

Bore/Sign	32	40	50	63	80	100	125	160	200
AJ	10.5	10.5	14	14	17	17	19	25	25
AK	7	7	9	9	11	11	13	17	17
BA	30.5	35.5	40.5	45.5	45.5	55.5	60.5	65.5	75.5
BB	10	10	12	12	16	16	20	20	25
BC	50	55	65	75	100	120	140	180	220
BD	32	36	45	50	63	75	90	115	135
BE	80	90	110	125	154	186	224	280	320
BF	64	72	90	100	126	150	180	230	270
BH	6.5	6.5	6.5	8.5	10.5	10.5	8	8	12
BP	7	9	9	9	12	14	16	18	22
T	32.5	38	46.5	56.5	72	89	110	140	175



Dimension of VCA type

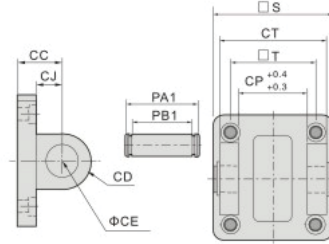
Bore/Sign	32	40	50	63	80	100	125	160	200
S	47	53	65	75	95	115	140	180	220
T	32.5	38	46.5	56.5	72	89	110	140	175
DC	22	25	27	32	36	41	50	55	60
DD	9	12	12	15	15	20	25	30	30
DE	10	12	12	16	16	20	25	30	30
DJ	13	16	17	22	22	27	33	35.5	36
DQ	25.8	27.8	31.7	39.7	49.7	59.7	69.7	89.7	89.7



Dimension of VCB type



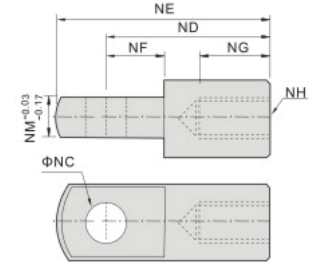
Bore/Sign	32	40	50	63	80	100	125	160	200
CC	22	25	27	32	36	41	50	55	60
CD	9	12	12	15	15	20	25	30	30
CE	10	12	12	16	16	20	25	30	30
CJ	13	16	17	22	22	27	31	35.5	36
CP	26	28	32	40	50	60	70	90	90
CT	45	52	60	70	90	110	130	170	170
PA1	52	60	68	79	99	119	139	181	181
PB1	46.5	53.5	61.5	71.5	91.5	111.5	131.5	171.5	171.5
S	47	53	65	75	95	115	140	180	220
T	32.5	38	46.5	56.5	72	89	110	140	175



Dimension of I Rod End Fitting



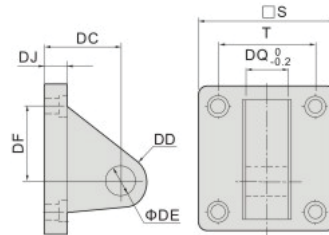
Bore/Sign	NC	ND	NE	NF	NG	NH	NM
32	10	40	52	15	20	M10x1.25	10
40	12	48	67	24	20	M12x1.25	12
50	16	64	89	32	23	M16x1.5	16
63	16	64	89	32	23	M16x1.5	16
80	20	80	112	40	30	M20x1.5	20
100	20	80	112	40	30	M20x1.5	20
125	30	110	155	50	56	M27x2.0	30
160	35	144	201	50	72	M36x2.0	35
200	35	144	201	55	72	M36x2.0	35



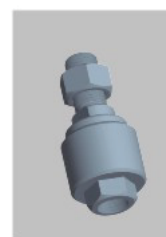
Dimensions of VCR type



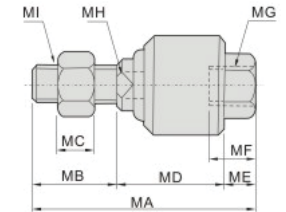
Bore/Sign	32	40	50	63	80	100	125	160	200
S	47	53	65	75	95	115	140	180	220
T	32.5	38	46.5	56.5	72	89	110	140	175
DC	32	36	45	50	63	70	90	115	135
DD	10	11	13	15	15	19	22	31	31
DE	10	12	12	16	16	20	25	30	30
DF	21	24	33	37	47	55	70	97	105
DJ	8	10	12	12	14	15	20	25	30
DQ	25.8	27.8	31.7	39.7	49.7	59.7	69.7	89.7	89.7



Dimension of Floating Fitting



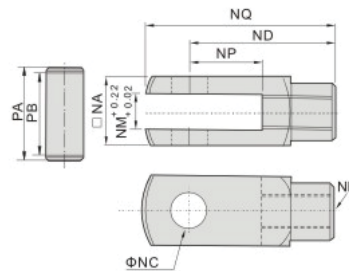
Bore/Sign	MA	MB	MC	MD	ME	MF	MG	MH	MI
32	73	20	6	45	8	26	M10x1.25	12	M10x1.25
40	77	24	7	46	7	26	M12x1.25	12	M12x1.25
50	106	32	8	62	12	34	M16x1.5	19	M16x1.5
63	106	32	8	62	12	34	M16x1.5	19	M16x1.5
80	122	40	10	68	14	42	M20x1.5	19	M20x1.5
100	122	40	10	68	14	42	M20x1.5	19	M20x1.5
125	147	54	13.5	77	16	40	M27x2.0	24	M27x2.0
160	251	72	18	161	18	78	M36x2.0	36	M36x2.0
200	251	72	18	161	18	78	M36x2.0	36	M36x2.0



Dimension of Y Rod End Fitting



Bore/Sign	NA	NC	ND	NH	NM	NP	NQ	PA	PB
32	19	10	40	M10x1.25	10	20	52	26.2	20
40	25.4	12	48	M12x1.25	12	24	62	32.8	26.5
50	32	16	64	M16x1.5	16	32	83	39.3	33
63	32	16	64	M16x1.5	16	32	83	39.3	33
80	44.4	20	80	M20x1.5	20	40	105	53.3	45
100	44.4	20	80	M20x1.5	20	40	105	53.3	45
125	55	30	110	M27x2.0	30	54	148	64	55.6
160	70	35	144	M36x2.0	35	72	191	80	70.6
200	70	35	144	M36x2.0	35	72	191	80	70.6



Dimension of Bearing Fitting



Bore/Sign	PA	PB	PC	PD	PE	PF	PG	PH
32	14	28	10	15	20	43	57	M10x1.25
40	16	32	12	17	22	50	66	M12x1.25
50	21	42	16	22	28	64	85	M16x1.5
63	21	42	16	22	28	64	85	M16x1.5
80	25	50	20	26	33	77	102	M20x1.5
100	25	50	20	26	33	77	102	M20x1.5
125	37	70	30	36	51	110	145	M27x2.0
160	43	80	35	41	56	125	165	M36x2.0
200	43	80	35	41	56	125	165	M36x2.0

