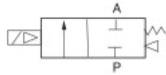


UW



UWS

How to Order?

UW - 10 - [] - E1

- | | | |
|------------------|------------------|----------------|
| UW series | Port size | Voltage |
| 10: 3/8" | 10: 3/8" | E1: AC110V |
| 15: 1/2" | 15: 1/2" | E2: AC220V |
| 20: 3/4" | 20: 3/4" | E3: AC380V |
| 25: 1" | 25: 1" | E4: DC24V |
| 35: 1-1/4" | 35: 1-1/4" | E5: DC12V |
| 40: 1-1/2" | 40: 1-1/2" | E6: AC36V |
| 50: 2" | 50: 2" | E7: AC24V |

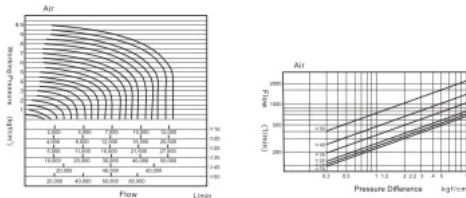
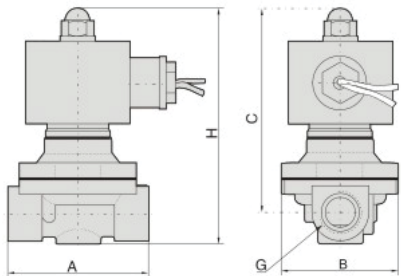
Seal material
Blank: NBR
V: VITON
E: EPDM

Product Features

- * Normal close, brass body
- * Multiple seals are available for different medium
- * Wide size range from 1/8" to 2"
- * Valve body exchangeable with ZS series valve but with lower cost
- * Diaphragm pilot solenoid valve, with lower working pressure

* UW series, 2 port, 2 position, 1/2" port size, NBR seal, AC220V, model: UW-15E2

Main Dimensions (mm)



Model	A	B	C	H	G
UW-10	67	55	100	113	3/8"
UW-15	67	57	101.5	115	1/2"
UW-20	69	57	103	120	3/4"
UW-25	98	73.5	109.5	129	1"
UW-35	126.5	91.5	138	164	1-1/4"
UW-40	126.5	91.5	141	170	1-1/2"
UW-50	164	123	152.5	188	2"

Specifications

Voltage: AC220V

Model	UW-10E2	UW-15E2	UW-20E2	UW-25E2	UW-35E2	UW-40E2	UW-50E2
Working medium	Air, Water, Oil, Gas						
Acting type	Direct acting type, N.C.						
Orifice(mm)	16	16	20	25	35	40	50
Cv value	4.8	4.8	7.6	12	24	29	48
Port size	3/8"	1/2"	3/4"	1"	1-1/4"	1-1/2"	2"
Fluid viscosity	(Below 20 CST)						
Working pressure(Bar)	Water : 0.5, Air : 0.7, Oil : 0.5, Gas : 0.7						
Guaranteed pressure(Bar)	11						
Working temperature (°C)	-5~80						
Voltage range	-15 ~ 10%						
Valve body material	Brass						
Seal material	NBR, VITON						

How to Order?

UWS - 06 - [] - E1

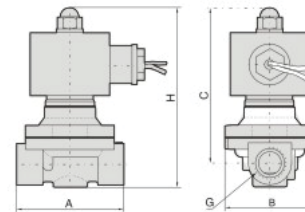
- | | | | |
|--------------------------|------------------|----------------------|----------------|
| UWS: SS304 series | Port size | Seal material | Voltage |
| | 06: 1/8" | Blank: NBR | E1: AC110V |
| | 08: 1/4" | V: VITON | E2: AC220V |
| | 10: 3/8" | E: EPDM | E3: AC380V |
| | 15: 1/2" | | E4: DC24V |
| | 20: 3/4" | | E5: DC12V |
| | | | E6: AC36V |
| | | | E7: AC24V |

* UWS SS304 series, 2 port, 2 position, 1/2" port size, NBR seal, AC220V, model: UWS-15E2

Product Features

- * Normal close, SS304 body
- * Multiple seals are available for different medium
- * Wide size range from 1/8" to 2"
- * Valve body exchangeable with ZS series valve but with lower cost
- * Diaphragm pilot solenoid valve, with lower working pressure

Main Dimensions (mm)

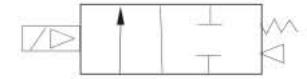


Model	A	B	C	H	G
UWS-06	36	36	67.5	79	1/8"
UWS-08	34	34	69.5	78.5	1/4"
UWS-10	40.5	40.5	81.5	94.5	3/8"
UWS-15	69.5	56	98	111	1/2"
UWS-20	72	56	102.5	119	3/4"
UWS-25	98	76	105	125	1"
UWS-35	114.5	85.5	133.5	157	1-1/4"
UWS-40	121.5	94	139	169	1-1/2"
UWS-50	166	121.5	156.5	192	2"

Specifications

Voltage: AC220V

Model	UWS-06E2	UWS-08E2	UWS-10E2	UWS-10BE2	UWS-15E2	UWS-20E2	UWS-25E2	UWS-35E2	UWS-40E2	UWS-50E2
Working medium	Air, Water, Oil, Gas									
Acting type	Direct acting type, N.C.									
Orifice(mm)	2.5	2.5	4	16	16	20	25	35	40	50
Cv value	0.23	0.23	0.6	4.8	4.8	7.6	12	24	29	48
Port size	1/8"	1/4"	3/8"	3/8"	1/2"	3/4"	1"	1-1/4"	1-1/2"	2"
Fluid viscosity	(Below 20 CST)									
Working pressure(Bar)	Water : 0.5, Air : 0.7, Oil : 0.5, Gas : 0.7									
Guaranteed pressure(Bar)	10.5									
Working temperature (°C)	-5~80									
Voltage range	-15 ~ 10%									
Valve body material	Stainless Steel 304									
Seal material	NBR, VITON									



How to Order?

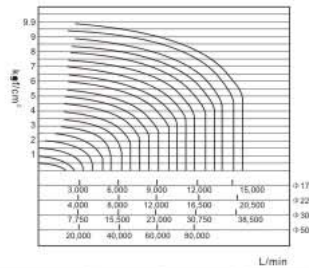
US	-	10	-	E1
US series		Port size		Voltage
		10: 3/8"		E1: AC110V
		15: 1/2"		E2: AC220V
		20: 3/4"		E3: AC380V
		25: 1"		E4: DC24V
		35: 1-1/4"		E5: DC12V
		40: 1-1/2"		E6: AC36V
		50: 2"		E7: AC24V

* US series, 2 port, 2 position, 3/8" port size, voltage: AC220V, model: US-10E2

Product Features

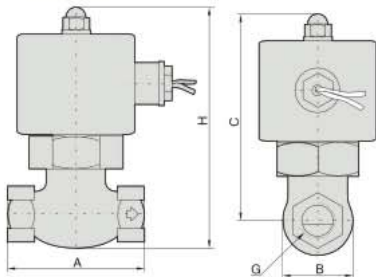
- * Normal close, brass body, especially for steam
- * Sizes range from 3/8" to 2"
- * Piston pilot solenoid valve with high working pressure and temperature

Flow Chart



Mode	A	B	C	H	G
US-10	82	42	125	146	3/8"
US-15	82	42	125	146	1/2"
US-20	82	42	125	146	3/4"
US-25	90.5	52	136	162	1"
US-35	111	74	148	185	1-1/4"
US-40	111	74	148	183	1-1/2"
US-50	163	94.5	176	223	2"

Main Dimensions (mm)



Specifications

Model	US-10E2	US-15E2	US-20E2	US-25E2	US-35E2	US-40E2	US-50E2
Working medium	Air, Water, Steam						
Acting type	Pilot type, N.C.						
Orifice(mm)		17		22		30	50
Cv value		4.8		12		20	45
Port size	3/8"	1/2"	3/4"	1"	1-1/4"	1-1/2"	2"
Fluid viscosity	Below 20 CST						
Working pressure(Bar)	1-15						
Guaranteed pressure(Bar)	23						
Working temperature (°C)	-5-180						
Voltage range	-15-10%						
Valve body material	Brass						
Seal material	PTFE						

Voltage: AC220V

How to Order?

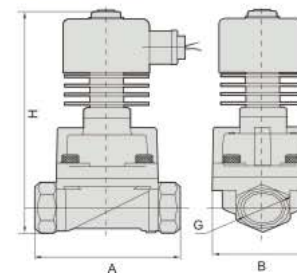
HUS	-	10	-	T	-	E2	-	15L	-	S2
HUS SS series		Port size		Seal material		Voltage		Orifice(mm)		S2: SS304
		10: 3/8"		T: Teflon		E1: AC110V		15L= 15.0		Valve body
		15: 1/2"				E2: AC220V		20L= 20.0		S2: SS304
		20: 3/4"				E4: DC24V		25L= 25.0		
		25: 1"						32L= 32.0	} Cancel if same with port size	
		35: 1-1/4"						35L= 35.0		
		40: 1-1/2"						40L= 40.0		
		50: 2"						50L= 50.0		
		F: Flange								

* HUS SS series, 2 port, 2 position, 3/8" port size, teflon seal, AC110V, orifice: 15mm, stainless steel 304 valve body, normal close, model: HUS10TE1-15LS2

Product Features

- * Normal close, SS304 body
- * Sizes range from 3/8" to 2"
- * Available both thread and flange connection
- * Piston pilot solenoid valve with high working pressure and temperature

Main Dimensions (mm)



Specifications

(G) Port size	Orifice (mm)	CV value	Pressure difference (Bar)			Max. temperature (°C)	Model 220VAC 50/60HZ	Main dimension Length x Width x Height (mm)
			Min. pressure	Max. working pressure	Oil			
3/8"	15	4.5	0.5	16	16	250	HUS10TE2-15LS2	75 x 52 x 159
1/2"	15	4.5	0.5	16	16	250	HUS-15TE2S2	75 x 52 x 159
3/4"	20	8.0	0.5	16	16	250	HUS-20TE2S2	85 x 60 x 171
1"	25	12	0.5	16	16	250	HUS-25TE2S2	100 x 70 x 178
1-1/4"	35	22	0.5	16	16	250	HUS-35TE2S2	120 x 90 x 198
1-1/2"	35	22	0.5	16	16	250	HUS40TE2-35LS2	120 x 90 x 198
2"	50	45	0.5	16	16	250	HUS-50TE2S2	150 x 110 x 220
Flange 4 Port	25	12	0.5	16	16	250	HUSFTE2-25LS2	134 x 110 x 215
	32	22	0.5	16	16	250	HUSFTE2-32LS2	160 x 135 x 230
	40	22	0.5	16	16	250	HUSFTE2-40LS2	160 x 145 x 235
	50	45	0.5	16	16	250	HUSFTE2-50LS2	200 x 155 x 250

Usage

Electro-magnetic valve (also called diaphragm valve) is the "switch" for compressed air in the dust clean blowing system of the pulse bag filter. Controlled by the output signals of the pulse jet control device, It makes dust clean to the filter bags cell by cell to keep the resistance of the baghouse within the set range and thus guarantee the processing functions and the dust-collecting efficiency of the baghouse.

EMCF electro-magnetic pulse valve is a right-angle valve, with the 90° angle between the Inlet and outlet, which is suitable for the installation connection between the gas dome and the baghouse blow tube provide good air flow and satisfactory dust clean pulses.

EMCYF electro-magnetic pulse valve is embedded valve (also called submerged valve) which is directly installed on the header. They have better flow characteristics and operate with reduced pressure loss, therefore, they are suitable for conditions where the pressure of the gas source is relatively low.

Working Principle

The electro-magnetic pulse diaphragm valve is composed of two gas cells. When the compressed air is connected, it comes into the back gas cell through the orifice. The pressure in the back gas cell pushes the diaphragm closely against the outlet of the valve and the electro-magnetic valve stays in the "closed" condition.

The electrical signals from the pulse jet control device move the armature of the electro-magnetic pulse valve. The air escape of the back gas cell opens and the back gas cell loses pressure quickly, thus the diaphragm moves back and the compressed air blows through the valve outlet. The electro-magnetic pulse valve comes into the "open" condition.

When the electrical signals from the pulse jet control device disappear, the armature of the electro-magnetic pulse valve returns to its original position. The air escape of the back gas cell closes and the pressure in the back gas cell rises, which pushes the diaphragm closely again.

Installation Method

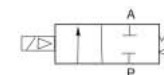
Solenoid pulse valve input (in) is connected to the metal pipe of air storage cylinder, and its output is connected to the blast pipe of dust pocket. Between the connect screw thread is filled with tetrafluoroethylene tape for seal.



EMCF-25



EMCF-50



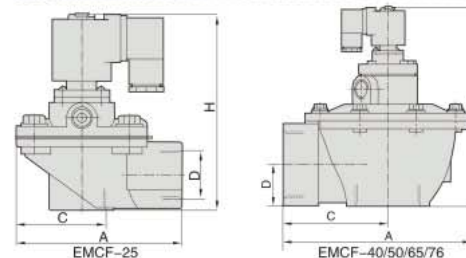
How to Order?

EMCF	—	25	—	E1	
EMCF series		Orifice 25: 25mm 40: 40mm 50: 50mm 65: 65mm 76: 76mm		Voltage E1: AC110V E2: AC220V E4: DC24V	* EMCF series, Orifice: 25mm, Voltage: AC220V, Model: EMCF-25E2

Product Features

- * Normal close, aluminium body
- * Especially for dusty collection
- * Bigger size from 1" to 3"
- * Diaphragm pilot solenoid valve, with lower working pressure

Main Dimensions (mm)

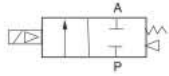


Model	H	A	C	D
EMCF-25	125	110	63	21.5
EMCF-40	170	140	78	32.5
EMCF-50	200	210	112	40
EMCF-65	225	210	115	48
EMCF-76	254	217	117	66

Specifications

Voltage: AC220V

Model	EMCF-25E2	EMCF-40E2	EMCF-50E2	EMCF-65E2	EMCF-76E2
Working medium	Clean air				
Acting type	Pilot type, N.C.				
Orifice(mm)	φ25	φ40	φ50	φ65	φ76
Port size	1"	1-1/2"	2"	2-1/2"	3"
Working pressure(Bar)	4-6				
Guaranteed pressure(Bar)	9				
Working temperature(°C)	-10-55				
Voltage range	-15-10%				
Relative humidity	<85%				
Diaphragm life	≤1,000,000				
Valve body material	Aluminum				
Seal material	NBR				



How to Order?

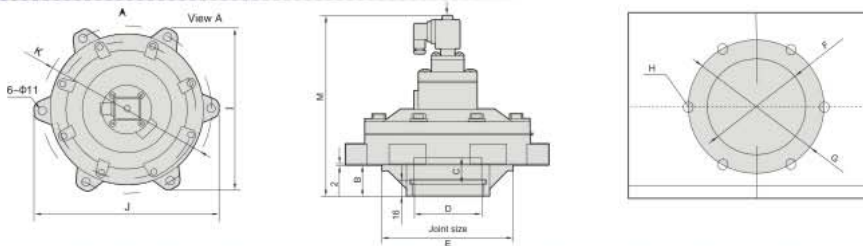
EMCYF	50	E1
EMCYF series	Orifice 50: 50mm 62: 62mm 76: 76mm	Voltage E1: AC110V E2: AC220V E4: DC24V

* EMCYF series, Orifice: 50mm, Voltage: AC220V, Model: EMCYF-50E2

Product Features

- * Normal close, aluminium body
- * Especially for dusty collection
- * Bigger size from 2" to 3"
- * Diaphragm pilot solenoid valve, with lower working pressure

Main Dimensions (mm)



Model	M	B	C	D	E	F	G	H	I	J	K
EMCYF-50	188	31	24	Φ60 ^{+0.04} _{-0.02}	Φ118	Φ118	Φ180	6-M10	178	202	Φ180
EMCYF-62	196	35	34	Φ75 ^{+0.04} _{-0.02}	Φ142	Φ142	Φ208	6-M10	202	230	Φ208
EMCYF-76	200	35	44	Φ89 ^{+0.04} _{-0.02}	Φ140	Φ142	Φ226	6-M10	219	249	Φ226

Specifications

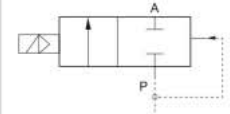
Model	Voltage: AC220V		
	EMCYF-50E2	EMCYF-62E2	EMCYF-76E2
Working medium	clean air		
Acting type	Pilot type, N.C.		
Orifice(mm)	φ50	φ62	φ76
Port size	φ65	φ80	φ89
Working pressure(Bar)	2-6		
Guaranteed pressure(Bar)	9		
Working temperature(°C)	-10-55		
Voltage range	-15-10%		
Relative humidity	<85%		
Diaphragm life	≤1,000,000		
Valve body material	Aluminum		
Seal material	NBR		



SLG5404-04



SLG5404-04D



How to Order?

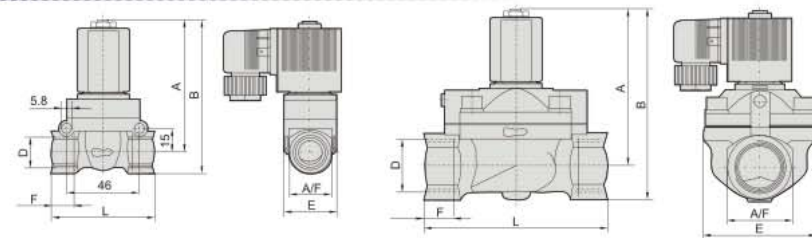
SLG5404	15	E1	
SLG5404 series	Port size 15: 1/2" 20: 3/4" 25: 1"	Voltage E1: AC110V E2: AC220V E3: AC380V E4: DC24V E5: DC12V E7: AC24V	Blank: Flying leads type D: DIN connector

* SLG5404 series, 1/2" port size, flying leads coil, voltage: AC220V, Model: SLG5404-15E2

Product Features

- * Normal close, brass body
- * High pressure, PTFE seal
- * Piston pilot solenoid valve with high working pressure and temperature

Main Dimensions (mm)



Model	Orifice(mm)	Port size	A	B	F	E	L	A/F
SLG5404-15	12	1/2"	83	95.5	14	32	65	27
SLG5404-20	20	3/4"	99.5	119	16	60	92	40
SLG5404-25	25	1"	99.5	119	16	60	92	40

Specifications

Model	Voltage: AC220V			
	SLG5404-15E2	SLG5404-20E2	SLG5404-25E2	
Working medium	Air, Water, Oil			
Acting type	Pilot type, N.C.			
Orifice (mm)	12	20	25	
CV value	2	5	10	
Port size	1/2"	3/4"	1"	
Working pressure (Bar)	GAS:1-50, Liquid:1-50	GAS:1-40, Liquid:1-25	GAS:1-40, Liquid:1-25	GAS:1-40, Liquid:1-25
Guaranteed pressure(Bar)	75			
Voltage range	-15-10%			
Working temperature (°C)	-5-150			
Power consumption	AC-5.5VA, DC-9W			
Valve body material	Brass			
Seal material	PTFE			



How to Order?

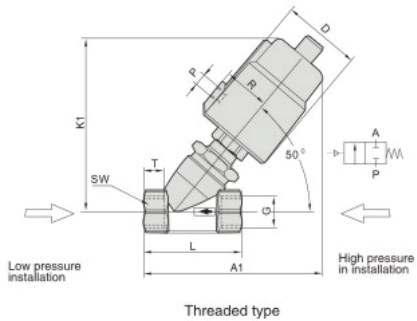
EMC	--	10	--	40	--	A
EMC series full stainless steel series angle valve		Port size 10: 3/8" 15: 1/2" 20: 3/4" 25: 1"		Actuator size 40: 40mm 50: 50mm 63: 63mm 80: 80mm 100: 100mm		Type A: Single acting normal cClose B: Single acting normal open C: Double acting normal close D: Double acting free installation

* EMC series full stainless steel series, 3/8" port size, actuator size 40mm, single acting normal close, Model: EMC10-40A

Product Features

- * Normal close/Normal open full stainless steel angle valve, available body: SS304, SS316
- * Multiple seals are available for different medium
- * Wide size range from 3/8" to 2"

Main Dimensions (mm)

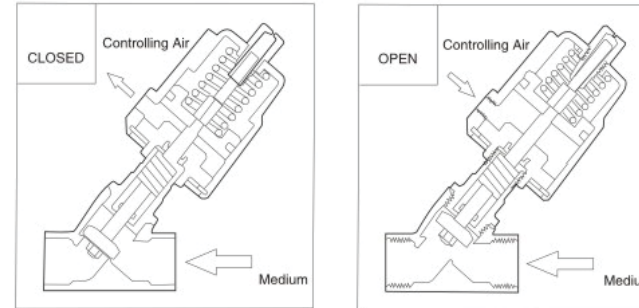


Type	Actuator (mm)	D (mm)	R (mm)	P (mm)	Thread					
					G	K1	A1	L	T	SW
DN10	40	45.5	27	G1/8"	G3/8"	115	120	68	12	26.6
	50	60	35	G1/8"	G3/8"	126	133	68	12	26.6
DN15	40	45.5	27	G1/8"	G1/2"	115	120	68	15	26.6
	50	60	35	G1/8"	G1/2"	126	133	68	15	26.6
DN20	50	60	35	G1/8"	G3/4"	131	137	75	16	32
	50	60	35	G1/8"	G1"	140	149	90	17	39.5
DN25	63	77	43	G1/8"	G1"	165	174	90	17	39.5
	63	77	43	G1/8"	G1-1/4"	175	188	116	21	50
DN32	80	98	52	G1/4"	G1-1/4"	185	203	116	21	50
	100	121	63	G1/4"	G1-1/4"	205	215	116	21	50
DN40	63	77	43	G1/8"	G1-1/2"	178	190	116	21	55.3
	80	98	52	G1/4"	G1-1/2"	187	204	116	21	55.3
DN50	100	121	63	G1/4"	G1-1/2"	208	216	116	21	55.3
	63	77	43	G1/8"	G2"	184	203	138	22	70
DN50	80	98	52	G1/4"	G2"	195	218	138	22	70
	100	121	63	G1/4"	G2"	215	230	138	22	70

Specifications

Model	EMC10-50A/B/C/D	Model	EMC10-50A/B/C/D
Port size	DN10-DN50	Medium temperature (°C)	PTFE -10° +180
Thread	G3/8"-G2"	Ambient temperature (°C)	-10° +60
Valve body material	CF8M	Viscosity (mm ² /s)	Max600
Actuator material	CF8	Installation	any position
Spool seal	PTFE	Controlling medium	Air, neutral gas
Piston seal	PTFE/FKM	Controlling pressure (Bar)	3-10
Medium	water, neutral gas or liquid, ethanol, oil, organic solvent, steam, alkaliescent and weak acid solution		

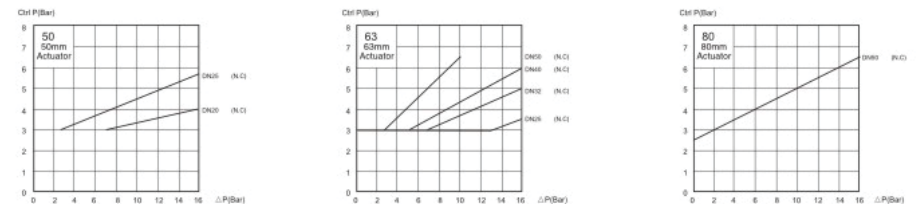
Flow direction: UP the seat, single acting normal close /open



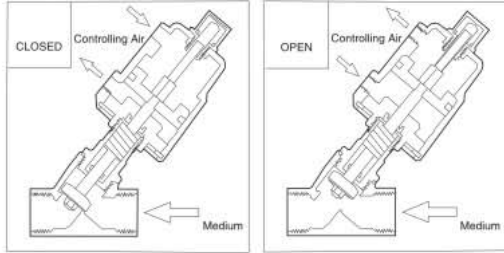
Specifications

Type	径Post size	Orifice (mm)	Actuator (mm)	Kv valve	Working pressure (Bar)	Normal Close		Normal Open		Model	
						Admitted differential pressure range (Bar)	Control pressure range (Bar)	Admitted differential pressure range (Bar)	Control pressure range (Bar)	N.C. Normal close single acting	N.O. Normal open single acting
DN10	G3/8"	13	40	4.7	16	0-16	≥4	-	-	EMC10-40A	EMC10-40B
	G3/8"	13	50	4.7		0-16	≥3	0-16	3	EMC10-50A	EMC10-50B
DN15	G1/2"	13	40	4.7	16	0-16	≥4	-	-	EMC15-40A	EMC15-40B
	G1/2"	13	50	4.7		0-16	≥3	0-16	3	EMC15-50A	EMC15-50B
DN20	G3/4"	18	50	9.5	16	0-16	3-4	0-16	3	EMC20-50A	EMC20-50B
	G1"	24	50	18.1		0-16	3-5.5	-	-	EMC25-50A	EMC25-50B
DN25	G1"	24	63	18.1	16	0-16	3-3.5	0-16	3.5	EMC25-63A	EMC25-63B
	G1-1/4"	31	63	23.1		0-16	3-5	0-14	3.9	EMC32-63A	EMC32-63B
DN40	G1-1/2"	35	63	32.9	16	0-16	3-6	0-11	3.9	EMC40-63A	EMC40-63B
	G2"	45	63	52.8		0-10	3-6.5	0-6	3.9	EMC50-63A	EMC50-63B
DN50	G2"	45	80	52.8	16	0-16	3-6.6	0-12	4	EMC50-80A	EMC50-80B

Flow Chart



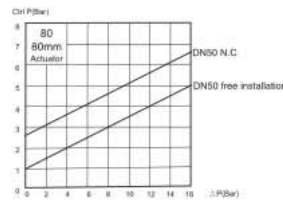
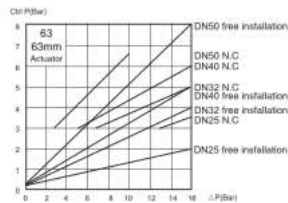
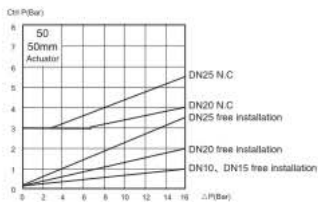
Flow direction:UP the seat, double action N.C/N.O



Specifications

Type	Port size	Orifice	Actuator (mm)	Kv value	180°C Working pressure 180°C max (Bar)	Admitted pressure difference (Bar)	Model			
							Double acting (N.C) (Bar)	Double acting free installation (Bar)	Double acting (N.C)	Double acting free installation
DN10	G3/8"	13	40	4.7	16	0-16	≥4	0-2	EMC10-40C	EMC10-40D
DN10	G3/8"	13	50	4.7		0-16	≥3	0-1	EMC10-50C	EMC10-50D
DN15	G1/2"	13	40	4.7		0-16	≥4	0-2	EMC15-40C	EMC15-40D
DN15	G1/2"	13	50	4.7		0-16	≥3	0-1	EMC15-50C	EMC15-50D
DN20	G3/4"	18	50	9.5		0-16	3-4	0-2	EMC20-50C	EMC20-50D
DN25	G1"	24	50	18.1		0-16	3-5.5	0-3.5	EMC25-50C	EMC25-50D
DN25	G1"	24	63	18.1		0-16	3-3.5	0-2	EMC25-63C	EMC25-63D
DN32	G1-1/4"	31	63	23.1		0-16	3-5	0-4	EMC32-63C	EMC32-63D
DN40	G1-1/2"	35	63	32.9		0-16	3-6	0-5	EMC40-63C	EMC40-63D
DN50	G2"	45	63	52.8		0-10	3-6.5	0-8	EMC50-63C	EMC50-63D
DN50	G2"	45	80	52.8		0-16	3-6.6	0-5	EMC50-80C	EMC50-80D

Flow Chart



How to Order?

EMCP -- 10 -- 40 -- A -- S1

EMCP plastic actuator series angle valve

Port size
10: 3/8"
15: 1/2"
20: 3/4"
25: 1"
32: 1-1/4"
40: 1-1/2"
50: 2"

Actuator size
40: 40mm
50: 50mm
63: 63mm
80: 80mm
100: 100mm

A: Single acting normal close
B: Single acting normal open
C: Double acting

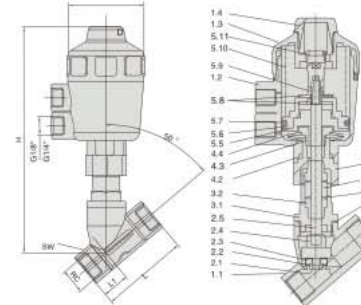
Body material
S1:SS316
S2:SS304

Product Features

- * Normal close/Normal open plastic actuator angle valve, available body: SS304, SS316
- * Multiple seals are available for different medium
- * Wide size range from 3/8" to 2"
- * More economy style

* EMCP plastic actuator series angle valve, 3/8" port size, actuator size: 40mm, single acting normal close, SS304 valve body, Model: EMC10-40AS2

Main Dimensions (mm)

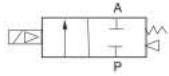


Outline dimension (mm)							
DN	RC	L	L1	SW	H	D	Actuator
10	3/8"	55	17	21	120	54	40
15	1/2"	70	21	26.5	135	63	50
20	3/4"	76	23	32	145	63	50
25	1"	90	25	40	155	63	50
32	1-1/4"	116	32	50	200	81	63
40	1-1/2"	116	32	55.5	230	96	80
50	2"	138	40	68.5	250	96	80

List of parts			
1.1	Body	3.1	Screw connector
1.2	Cylinder	3.2	V sealing
1.3	Cylinder head	3.3	Seal ring
1.4	Ornament cover	3.4	Gasket
2.1	Bolt	3.5	Spring
2.2	Orifice plate seal	4.1	Connecting nut
2.3	Seal disc	4.2	Seal ring
2.4	Disc	4.3	Lock nut
2.5	Stem	4.4	Leaf spring
5	Piston	5.6	Flange
5.7	Seal ring	5.8	Gasket
5.9	Hexagon nut	5.10	Spring
5.11	Position indicator		

Specifications

Model		Model	
Port size	DN10-DN50	Temperature of medium	PTFE: -10°~180° FPM: -10°~100°
Thread	G3/8"-G1/2"	Viscosity	max 600mm ² /s
Body material	SS316/SS304	Installation	any position
Actuator material	Engineering plastic	Controlling medium	air/neutral gas
Seat seal	PTFE/FPM	Controlling pressure (Bar)	3-8
Stem seal	PTFE/FPM	Working Pressure(Bar)	0-16
Piston seal	FPM/NBR		
Applicable medium	water, neutral gas or liquid, ethanol, oil, organic solvent, steam,		



How to Order?

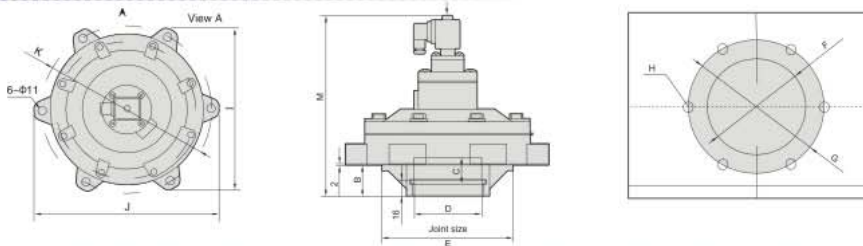
EMCYF	50	E1
EMCYF series	Orifice 50: 50mm 62: 62mm 76: 76mm	Voltage E1: AC110V E2: AC220V E4: DC24V

* EMCYF series, Orifice: 50mm, Voltage: AC220V, Model: EMCYF-50E2

Product Features

- * Normal close, aluminium body
- * Especially for dusty collection
- * Bigger size from 2" to 3"
- * Diaphragm pilot solenoid valve, with lower working pressure

Main Dimensions (mm)



Model	M	B	C	D	E	F	G	H	I	J	K
EMCYF-50	188	31	24	Φ60 ^{+0.04} _{-0.02}	Φ118	Φ118	Φ180	6-M10	178	202	Φ180
EMCYF-62	196	35	34	Φ75 ^{+0.04} _{-0.02}	Φ142	Φ142	Φ208	6-M10	202	230	Φ208
EMCYF-76	200	35	44	Φ89 ^{+0.04} _{-0.02}	Φ140	Φ142	Φ226	6-M10	219	249	Φ226

Specifications

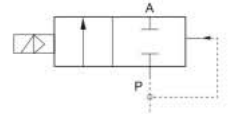
Model	Voltage: AC220V		
	EMCYF-50E2	EMCYF-62E2	EMCYF-76E2
Working medium	clean air		
Acting type	Pilot type, N.C.		
Orifice(mm)	φ50	φ62	φ76
Port size	φ65	φ80	φ89
Working pressure(Bar)	2-6		
Guaranteed pressure(Bar)	9		
Working temperature(°C)	-10-55		
Voltage range	-15-10%		
Relative humidity	<85%		
Diaphragm life	≤1,000,000		
Valve body material	Aluminum		
Seal material	NBR		



SLG5404-04



SLG5404-04D



How to Order?

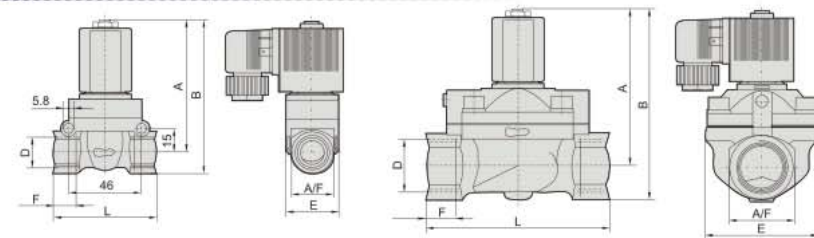
SLG5404	15	E1	
SLG5404 series	Port size 15: 1/2" 20: 3/4" 25: 1"	Voltage E1: AC110V E2: AC220V E3: AC380V E4: DC24V E5: DC12V E7: AC24V	Blank: Flying leads type D: DIN connector

* SLG5404 series, 1/2" port size, flying leads coil, voltage: AC220V, Model: SLG5404-15E2

Product Features

- * Normal close, brass body
- * High pressure, PTFE seal
- * Piston pilot solenoid valve with high working pressure and temperature

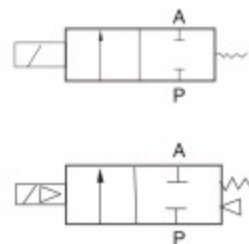
Main Dimensions (mm)



Model	Orifice(mm)	Port size	A	B	F	E	L	A/F
SLG5404-15	12	1/2"	83	95.5	14	32	65	27
SLG5404-20	20	3/4"	99.5	119	16	60	92	40
SLG5404-25	25	1"	99.5	119	16	60	92	40

Specifications

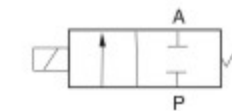
Model	Voltage: AC220V			
	SLG5404-15E2	SLG5404-20E2	SLG5404-25E2	
Working medium	Air, Water, Oil			
Acting type	Pilot type, N.C.			
Orifice (mm)	12	20	25	
CV value	2	5	10	
Port size	1/2"	3/4"	1"	
Working pressure (Bar)	GAS:1-50, Liquid:1-50	GAS:1-40, Liquid:1-25	GAS:1-40, Liquid:1-25	GAS:1-40, Liquid:1-25
Guaranteed pressure(Bar)	75			
Voltage range	-15-10%			
Working temperature (°C)	-5-150			
Power consumption	AC-5.5VA, DC-9W			
Valve body material	Brass			
Seal material	PTFE			



2V025



2V130



UD

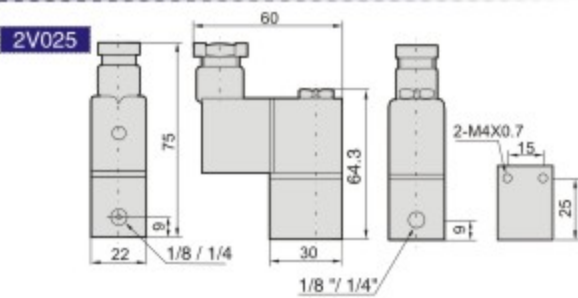
How to Order?

2V -- 025 -- -- E1 -- 06

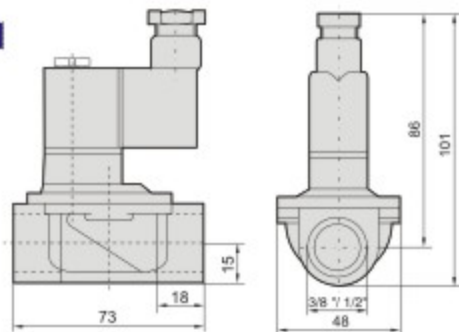
2V series	Orifice	Seal material	Voltage	Port size
025: 2mm	Blank: NBR	E1: AC110V	06: 1/8"	
130: 13mm	V: VITON	E2: AC220V	08: 1/4"	
250: 25mm	E: EPDM	E3: AC380V	10: 3/8"	
		E4: DC24V	15: 1/2"	
		E5: DC12V	20: 3/4"	
		E6: AC36V	25: 1"	
		E7: AC24V		

* 2V series, 2 port, 2 position, NBR seal, 1/4" port size, orifice 2mm, AC220V, model: 2V025E2-08

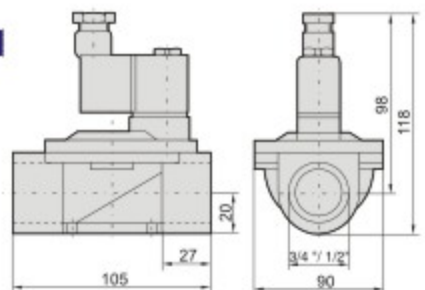
Main Dimensions (mm)



2V130



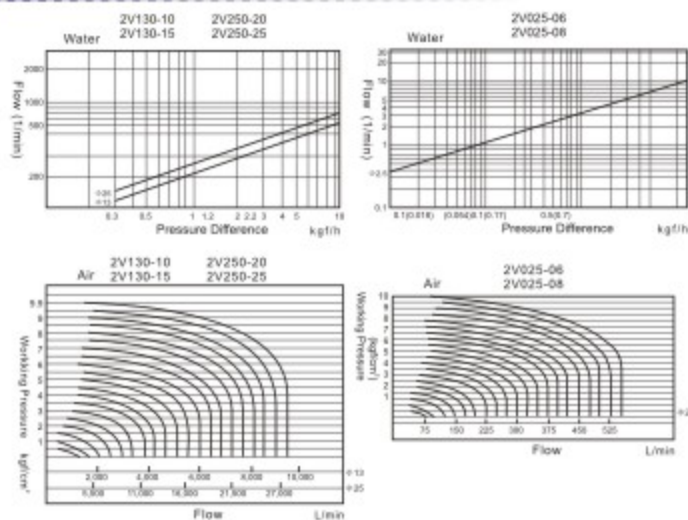
2V250



Product Features

- Normal close, brass body
- Multiple seals are available for different medium
- Sizes range from 1/8" to 1"
- Direct acting/diaphragm pilot solenoid valve, with lower working pressure

Flow Chart



Specifications

Model	2V025-06	2V025-08	2V130-10	2V130-15	2V250-20	2V250-25
Working medium	Air, Water, Steam					
Acting type	Direct acting type, N.C.			Pilot type, N.C.		
Orifice(mm)	2		13		25	
Cv value	0.23		6		23	
Port size	1/8"	1/4"	3/8"	1/2"	3/4"	1"
Fluid viscosity	20 CST Below					
Working pressure(Bar)	Air, Water, Oil : 0~8			Air, Water, Oil : 0.5~7		
Guaranteed pressure (Bar)	12			11		
Working temperature (°C)	-5~80					
Voltage range	-15~10%					
Protect class	IP65					
Power consumption	AC:7VA/60Hz, 9VA/50Hz, DC:6W					
Insulation	Class F					
Valve body material	Brass					
Seal material	NBR or VITON			NBR		
Shortest activate time	0.05s / second					

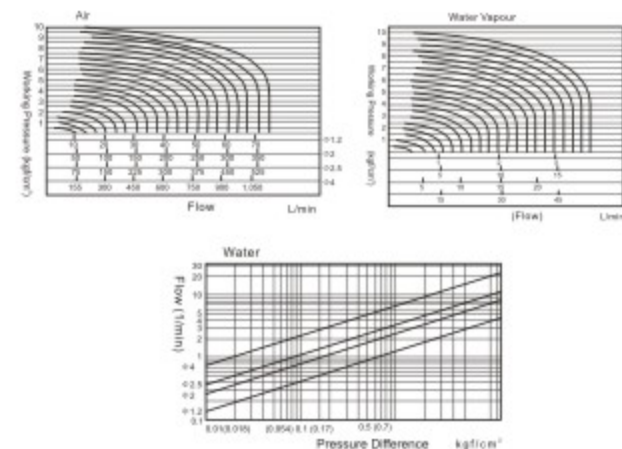
How to Order?

UD -- 10 -- -- E1

UD series	Port size	Seal material	Voltage
UDH: High pressure	06: 1/8"	Blank: NBR	E1: AC110V
	08: 1/4"	V: VITON	E2: AC220V
	10: 3/8"	E: EPDM	E3: AC380V
			E4: DC24V
			E5: DC12V
			E6: AC36V
			F7: AC24V

* UD series, 2 port, 2 position, 1/4" port size, orifice 2.5mm, NBR seal, AC220V, model: UD-08E2
 * UDH High Pressure series, 2 port, 2 position, 1/4" port size, orifice 2.5mm, NBR seal, AC220V, model: UDH-08E2

Flow Chart



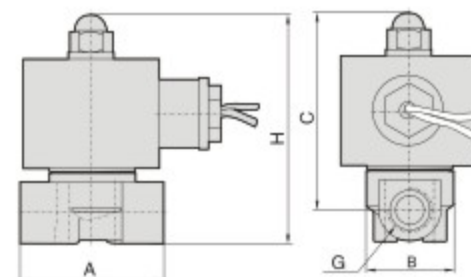
Product Features

- Normal close, brass body
- Multiple seals are available for different medium
- Compact design, space saving
- Direct acting solenoid valve, two ranges of working pressure

Specifications

Model	UD-06	UD-08	UD-10	UDH-06	UDH-08	UDH-10
Working medium	Air, Water, Oil, Gas					
Acting type	Direct acting type, N.C.					
Orifice(mm)	2.5	4	1.2	0.05	0.15	2
Cv value	0.23	0.6	0.05	0.15	0.15	0.15
Port size	1/8"	1/4"	3/8"	1/8"	1/4"	3/8"
Fluid viscosity	20 CST (Below)					
Working pressure	0~7			0~20		
Guaranteed pressure(Bar)	10			35		
Working temperature	-5~80					
Voltage range	-15~10%					
Valve body material	Brass					
Seal material	NBR, VITON					
Shortest activate time	0.05s / second					

Main Dimensions (mm)



Model	A	B	C	H	G
UD-06	40.5	30.3	66	75	1/8"
UD-08	40.5	30.3	66	75	1/4"
UD-10	52.5	32.2	74	85.5	3/8"
UDH-06	40.5	30.3	66	75	1/8"
UDH-08	40.5	30.3	66	75	1/4"
UDH-10	52.5	32.2	74	85.5	3/8"

Inner structure and categories of two way solenoid valves

Direct acting solenoid valves

Including normal close style (N.C.) and normal open style(N.O.). The N.C. style solenoid valve stay close at power off condition. When power on, the coil yields electricity-magnetic force, which exceed the spring force and hence pulls active armature approaching to static armature, the valve becomes open; when power off, the electricity-magnetic force disappear and the active armature go back to its original place by the spring force, the valve close. The N.O. style is just opposite. These valve are normally simple structure, dependable action, fast response, high frequency and with $\leq 6\text{mm}$ small orifice size(N.O. style $\leq 4\text{mm}$).

Diaphragm pilot solenoid valves

This style valve makes main valve and pilot valve together, when power on, the coil yields electricity-magnetic force pulls active armature approaching to static armature, the pilot valve open and control the main valve to open; when power off, the electricity-magnetic force disappear and with the gravity and spring force, the active armature close the pilot valve, which control the main valve to close. The N.O. style is just opposite. These valve are normally with bigger orifice size and $\leq 10\text{Bar}$ working pressure and with zero differential working pressure.

Piston pilot solenoid valves

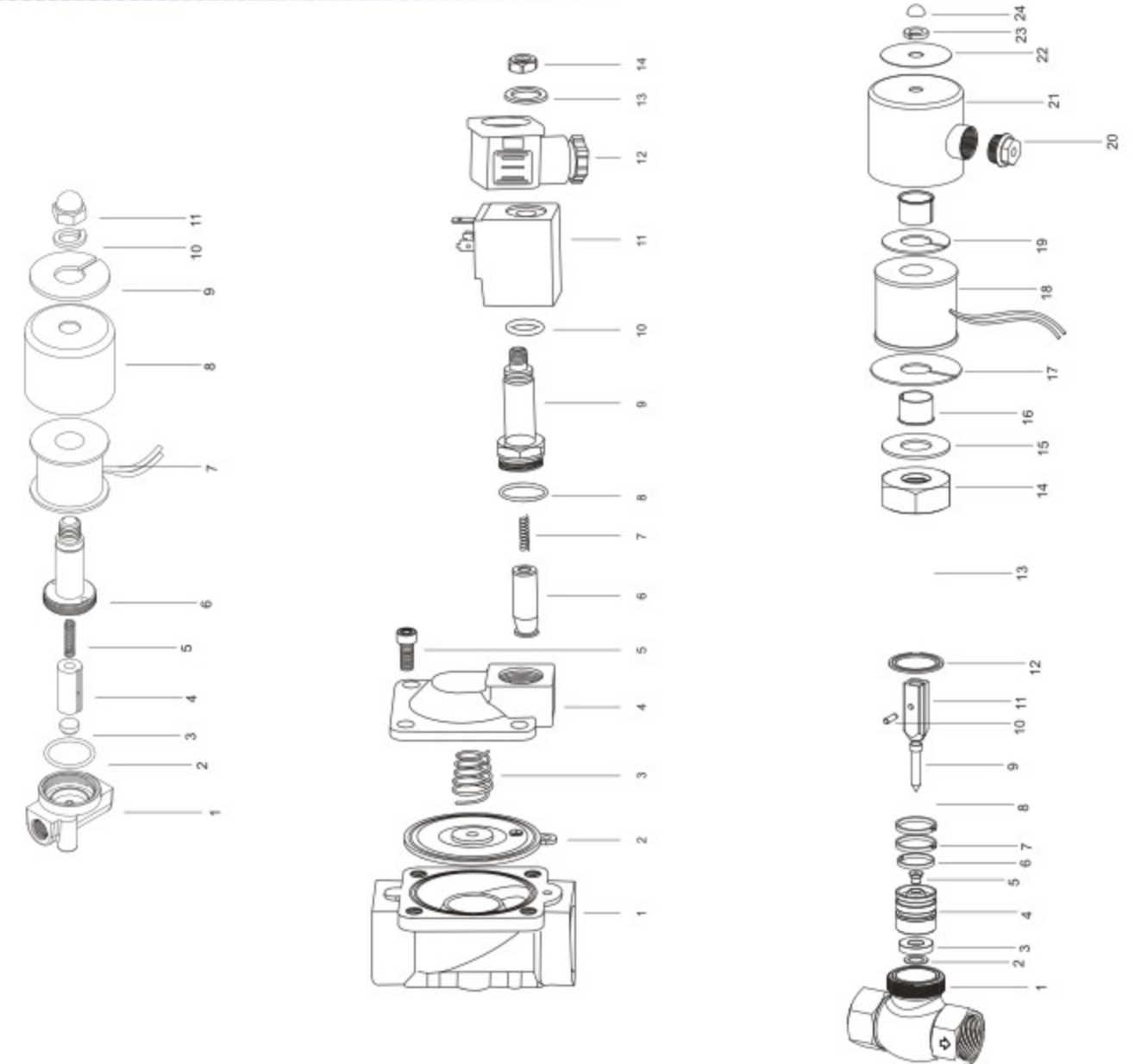
Similar with piston pilot solenoid valves, but supports for higher pressure and temperature, with $\geq 1\text{Bar}$ differential working pressure.

Seal Features

Material Medium Applicability	Material						
	NBR	HNBR	EPDM	VMQ	FKM	PTFE	PU
Highest working temperature	80°C	120°C	120°C	180°C	120°C	200°C	80°C
Lowest working temperature	-5°C	-10°C	-20°C	-40°C	-20°C	-50°C	-20°C
Anti-burning	x	x	x	△	○	○	△
Steam	x	△	○	○	△	○	x
Oil	○	○	x	△	○	○	○
O ₃	△	○	○	○	○	○	○
Chemical	△	○	○	○	○	○	○
Acid	△	○	○	△	○	○	x
Alkalinity	○	○	○	△	○	○	x
Water	○	○	○	○	○	○	○
Wearing	○	○	○	x	○	○	○
Anit distortion	○	○	○	○	○	x	x
Tension	○	○	○	x	○	x	○

Description of the symbol : ○ Very good ○ Good △ Normal level x Not OK

Part List

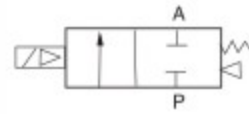


No	Designation
1	Valve body
2	O-ring
3	Seal pad
4	Pilot
5	Spring
6	Armature
7	Coil
8	Steel washer
9	Washer
10	Spring washer
11	Nut

No	Designation
1	Valve body
2	Diaphragm
3	Diaphragm spring
4	Valve cover
5	Hexagon screw
6	Pilot units
7	Plunger spring
8	O-ring
9	Plunger tube assembly
10	O-ring
11	Coil
12	Connector
13	Gasket
14	Lock nut

No	Designation
1	Valve body
2	Seal
3	Seal pad
4	Valve core
5	Seal
6	Gasket
7	Guide ring
8	Spring
9	Valve needle
10	Pin
11	Armature
12	Seal ring
13	Static armature

No	Designation
14	Nut
15	Gasket
16	Bushing
17	Steel plate
18	Coil
19	Steel plate
20	Nut
21	Steel cover
22	Min plate
23	Pin
24	Nut



How to Order?

SLP -- 06 -- -- E2 -- 3L -- S1 -- H

<p>SLP series</p> <p>Port size 06: 1/8" 08: 1/4" 10: 3/8" 15: 1/2" 20: 3/4" 25: 1" 35: 1-1/4" 40: 1-1/2" 50: 2" F: Flange</p>	<p>Seal material Blank: NBR V: VITON E: EPDM</p>	<p>Voltage E1: AC110V E2: AC220V E3: AC380V E4: DC24V E5: DC12V E6: AC36V E7: AC24V E8: DC110V E9: DC48V E10: DC36V</p>	<p>Orifice(mm) 1L: 1.0 1.5L: 1.5 2.5L: 2.5 3L: 3.0 4L: 4.0 5L: 5.0 6L: 6.0 10L: 10.0 10.5L: 10.5 13L: 13.0 20L: 20.0 25L: 25.0 35L: 35.0 40L: 40.0 50L: 50.0</p>	<p>Valve body Blank: brass S1: SS316</p>	<p>Control style Blank: Normal close H: Normal open</p>
---	--	---	--	--	---

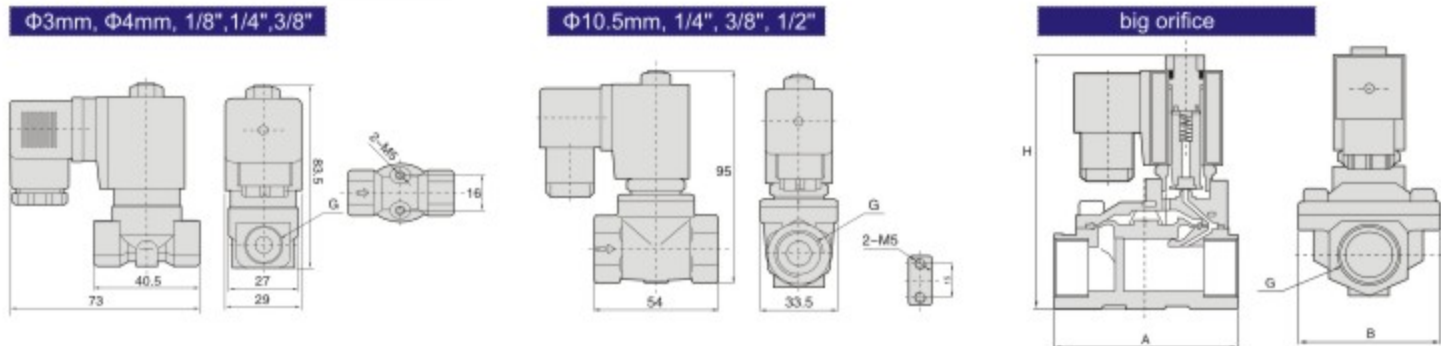
Cancel if same with port size

* SLP series, 2 port, 2 position, 1/8" port size, NBR Seal, AC110V, Orifice: 3mm, Brass valve body, normal close, model: SLP06E1-3L
 * SLP series, 2 port, 2 position, 3/8" port size, VITON Seal, AC220V, Orifice: 13mm, SS316 valve body, normal open, model: SLP10VE2-13LS1H

Product Features

- * Normal close, available body: brass, SS316
- * Multiple seals are available for different medium
- * Wide size range from 1/8" to 2" , with both thread and flange connection
- * Diaphragm pilot solenoid valve, with lower working pressure

Main Dimensions (mm)



Specifications

(G) Port size	Orifice (mm)	CV value	Pressure difference (Bar)			Max. temperature (°C)	Power		Model		Main dimension Length x Width x Height AxBxH(mm)	
			Min. pressure	Max. working pressure			AC 220	DC 24V	220VAC 50/60Hz			
				Air, Gas	Water, Hot water, Liquid				Light oil ≤20CST	Brass		Stainless steel
1/8"	3	0.23	0	13	13	10	80	22	13	SLP06E2-3L	SLP06E2-3LS1	
	3	0.23	0	13	13	-	130	22	13	SLP06EE2-3L	SLP06EE2-3LS1	
	3	0.23	0	13	13	10	120	22	13	SLP06VE2-3L	SLP06VE2-3LS1	
1/4"	3	0.23	0	13	13	10	80	22	13	SLP08E2-3L	SLP08E2-3LS1	
	3	0.23	0	13	13	-	130	22	13	SLP08EE2-3L	SLP08EE2-3LS1	
	3	0.23	0	13	13	10	120	22	13	SLP08VE2-3L	SLP08VE2-3LS1	
	10.5	1.47	0	10	10	10	80	22	13	SLP08E2-10.5L	---	
	10.5	1.47	0	10	10	-	130	22	13	SLP08EE2-10.5L	---	
	10.5	1.47	0	10	10	10	120	22	13	SLP08VE2-10.5L	---	
3/8"	3	0.3	0	13	13	10	80	22	13	SLP10E2-3L	SLP10E2-3LS1	
	3	0.3	0	13	13	10	130	22	13	SLP10EE2-3L	SLP10EE2-3LS1	
	3	0.3	0	13	13	10	120	22	13	SLP10VE2-3L	SLP10VE2-3LS1	
	4	0.6	0	8	8	6	80	22	13	SLP10E2-4L	SLP10E2-4LS1	
	4	0.6	0	8	8	6	130	22	13	SLP10EE2-4L	SLP10EE2-4LS1	
	4	0.6	0	8	8	6	120	22	13	SLP10VE2-4L	SLP10VE2-4LS1	
	10.5	1.68	0	10	10	10	80	22	13	SLP10E2-10.5L	---	
	10.5	1.68	0	10	10	-	130	22	13	SLP10EE2-10.5L	---	
	10.5	1.68	0	10	10	10	120	22	13	SLP10VE2-10.5L	---	
	13	4.5	0.5	16	16	13	80	22	13	SLP10E2-13L	SLP10E2-13LS1	66 x 48 x 112
	13	4.5	0.5	16	16	13	130	22	13	SLP10EE2-13L	SLP10EE2-13LS1	66 x 48 x 112
	13	4.5	0.5	16	16	13	120	22	13	SLP10VE2-13L	SLP10VE2-13LS1	66 x 48 x 112
1/2"	10.5	1.75	0	10	10	10	80	22	13	SLP15E2-10.5L	---	
	10.5	1.75	0	10	10	-	130	22	13	SLP15EE2-10.5L	---	
	10.5	1.75	0	10	10	10	120	22	13	SLP15VE2-10.5L	---	
	13	4.5	0.5	16	16	13	80	22	13	SLP15E2-13L	SLP15E2-13LS1	66 x 48 x 112
	13	4.5	0.5	16	16	13	130	22	13	SLP15EE2-13L	SLP15EE2-13LS1	66 x 48 x 112
3/4"	20	7.6	0.5	16	16	13	80	22	13	SLP-20E2	SLP-20E2S1	75 x 58 x 118
	20	7.6	0.5	16	16	13	130	22	13	SLP-20EE2	SLP-20EE2S1	75 x 58 x 118
	20	7.6	0.5	16	16	13	120	22	13	SLP-20VE2	SLP-20VE2S1	75 x 58 x 118
1"	25	12	0.5	16	16	13	80	22	13	SLP-25E2	SLP-25E2S1	96 x 70 x 131
	25	12	0.5	16	16	13	130	22	13	SLP-25EE2	SLP-25EE2S1	96 x 70 x 131
	25	12	0.5	16	16	13	120	22	13	SLP-25VE2	SLP-25VE2S1	96 x 70 x 131
1-1/4"	35	22	0.5	16	16	13	80	22	13	SLP-35E2	SLP-35E2S1	131 x 96 x 146
	35	22	0.5	16	16	13	130	22	13	SLP-35EE2	SLP-35EE2S1	131 x 96 x 146
	35	22	0.5	16	16	13	120	22	13	SLP-35VE2	SLP-35VE2S1	131 x 96 x 146
1-1/2"	40	30	0.5	16	16	13	80	22	13	SLP-40E2	SLP-40E2S1	131 x 96 x 146
	40	30	0.5	16	16	13	130	22	13	SLP-40EE2	SLP-40EE2S1	131 x 96 x 146
	40	30	0.5	16	16	13	120	22	13	SLP-40VE2	SLP-40VE2S1	131 x 96 x 146
2"	50	48	0.5	16	16	13	80	22	13	SLP-50E2	SLP-50E2S1	165 x 120 x 167
	50	48	0.5	16	16	13	130	22	13	SLP-50EE2	SLP-50EE2S1	165 x 120 x 167
	50	48	0.5	16	16	13	120	22	13	SLP-50VE2	SLP-50VE2S1	165 x 120 x 167
Flange connection	25	12	0.5	16	16	13	80	22	13	-	SLPFE2-25LS1	134 x 110 x 160
	25	12	0.5	16	16	13	130	22	13	-	SLPFEE2-25LS1	134 x 110 x 160
	25	12	0.5	16	16	13	120	22	13	-	SLPFVE2-25LS1	134 x 110 x 160
Flange connection	35	22	0.5	16	16	13	80	22	13	-	SLPFE2-35LS1	160 x 135 x 175
	35	22	0.5	16	16	13	130	22	13	-	SLPFEE2-35LS1	160 x 135 x 175
	35	22	0.5	16	16	13	120	22	13	-	SLPFVE2-35LS1	160 x 135 x 175
Flange connection	40	30	0.5	16	16	13	80	22	13	-	SLPFE2-40LS1	160 x 145 x 180
	40	30	0.5	16	16	13	130	22	13	-	SLPFEE2-40LS1	160 x 145 x 180
	40	30	0.5	16	16	13	120	22	13	-	SLPFVE2-40LS1	160 x 145 x 180
Flange connection	50	48	0.5	16	16	13	80	22	13	-	SLPFE2-50LS1	200 x 160 x 207
	50	48	0.5	16	16	13	130	22	13	-	SLPFEE2-50LS1	200 x 160 x 207
	50	48	0.5	16	16	13	120	22	13	-	SLPFVE2-50LS1	200 x 160 x 207