

AD'S BIZ STONES

THINK QUALITY

THINK STONE

THINK AD'S BIZ

INSTRUCTOR PROFILE

AD'S BIZ TEAM

Mr.APICHAART WONGPRASERTKUL (OTE)

MANAGING DIRECTOR

Mr.Suporn Chuensombat (AUI)

PROJECT COORDINATOR

AD'S BIZ STONES AND DÉCOR CO., LTD.



Marbles are perhaps one of the most beautiful natural resources in existence. This is why Ad's Biz Stone came into existence in 2007 as a stone manufacturing and fitting company with the sole purpose to bring nature's best at your household.

Over 100 projects and 14 years in experience by Professional and Responsible team. We proud to make you dream come true, living in the most beauty stone in your style.



Office Building



Technical Building



Condominiums



Home Offices



Single Detached Houses

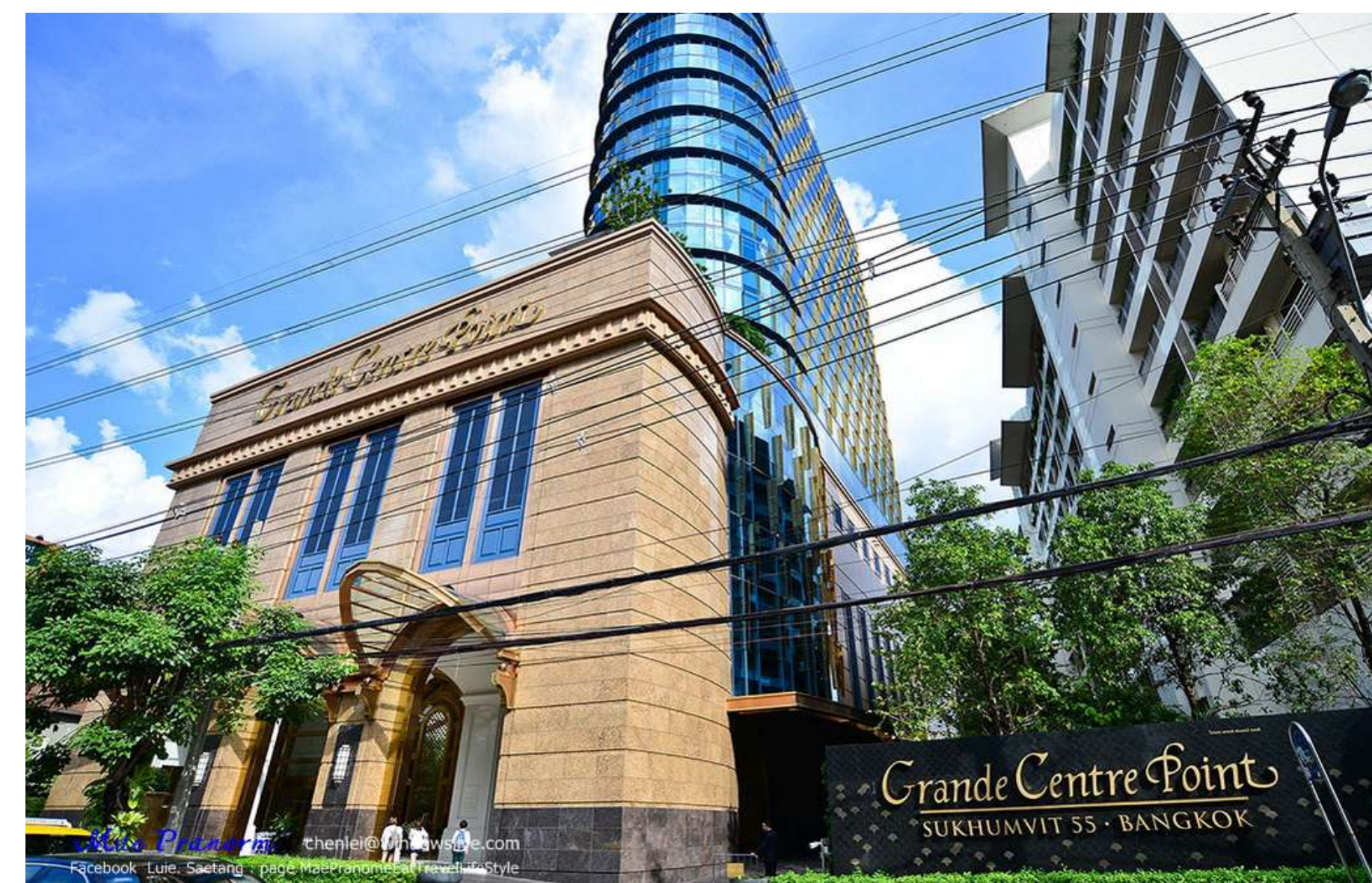


Townhomes

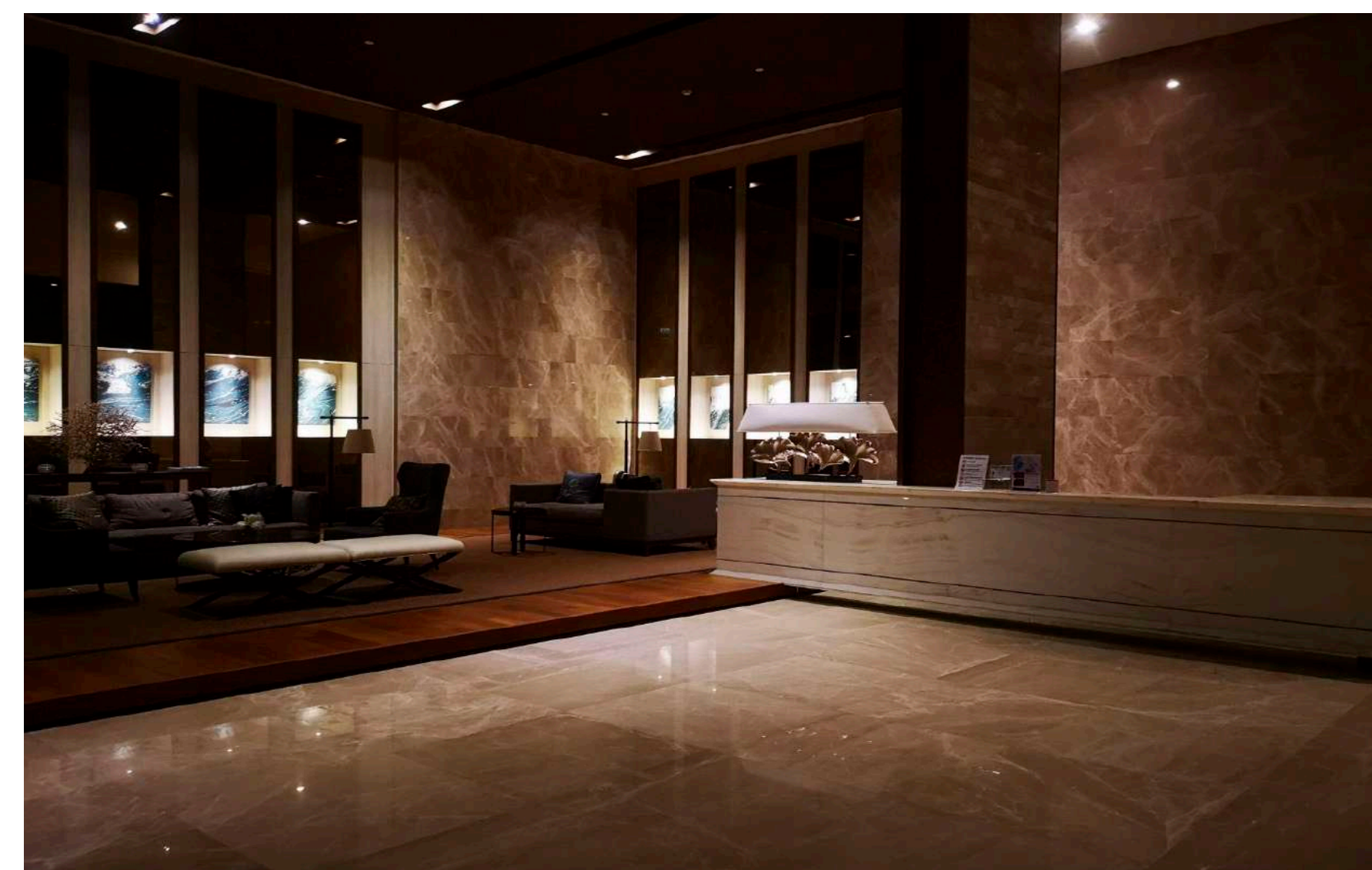
MILES STONE



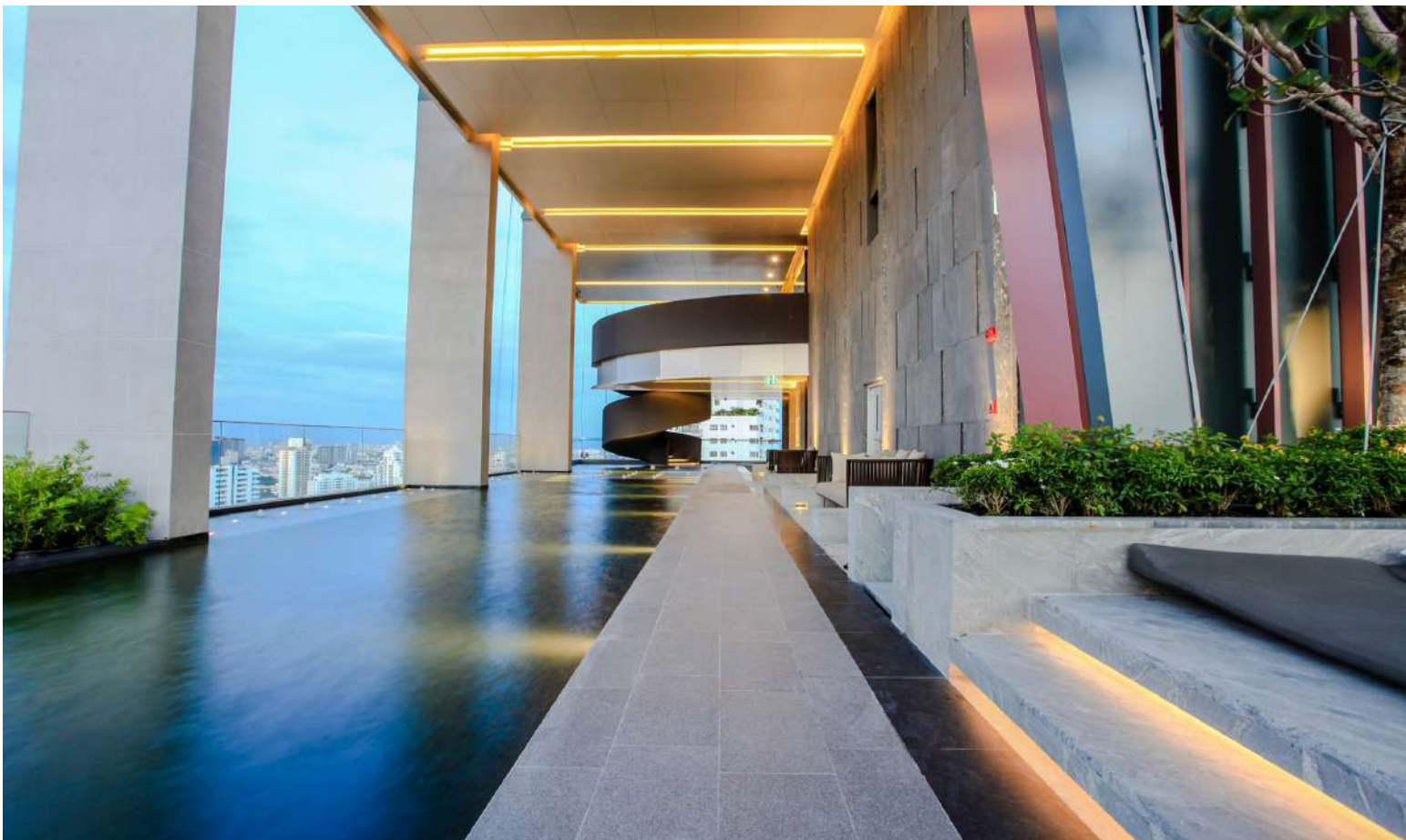
GRAND CENTER POINT THONGLOR



333 RIVERSIDE



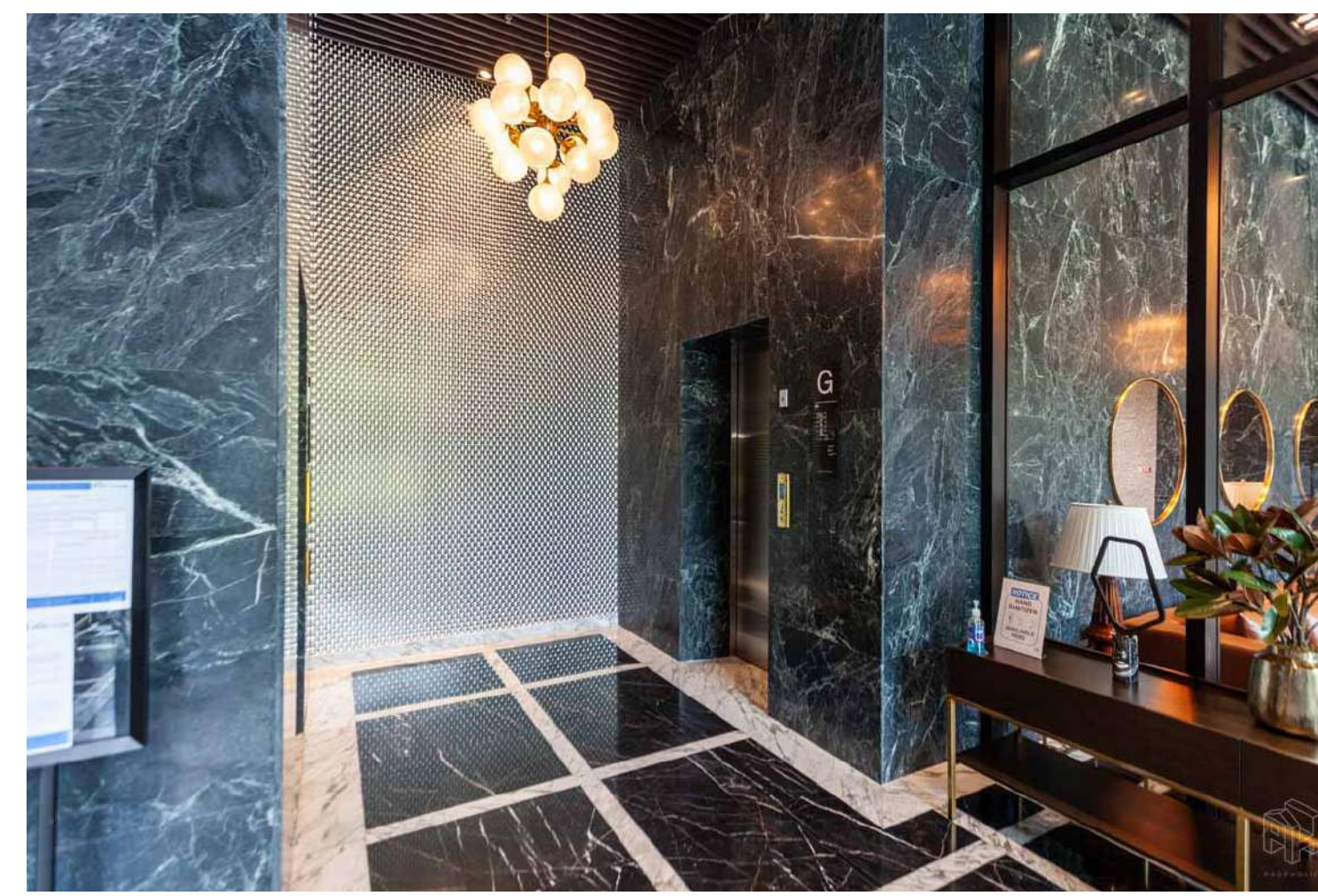
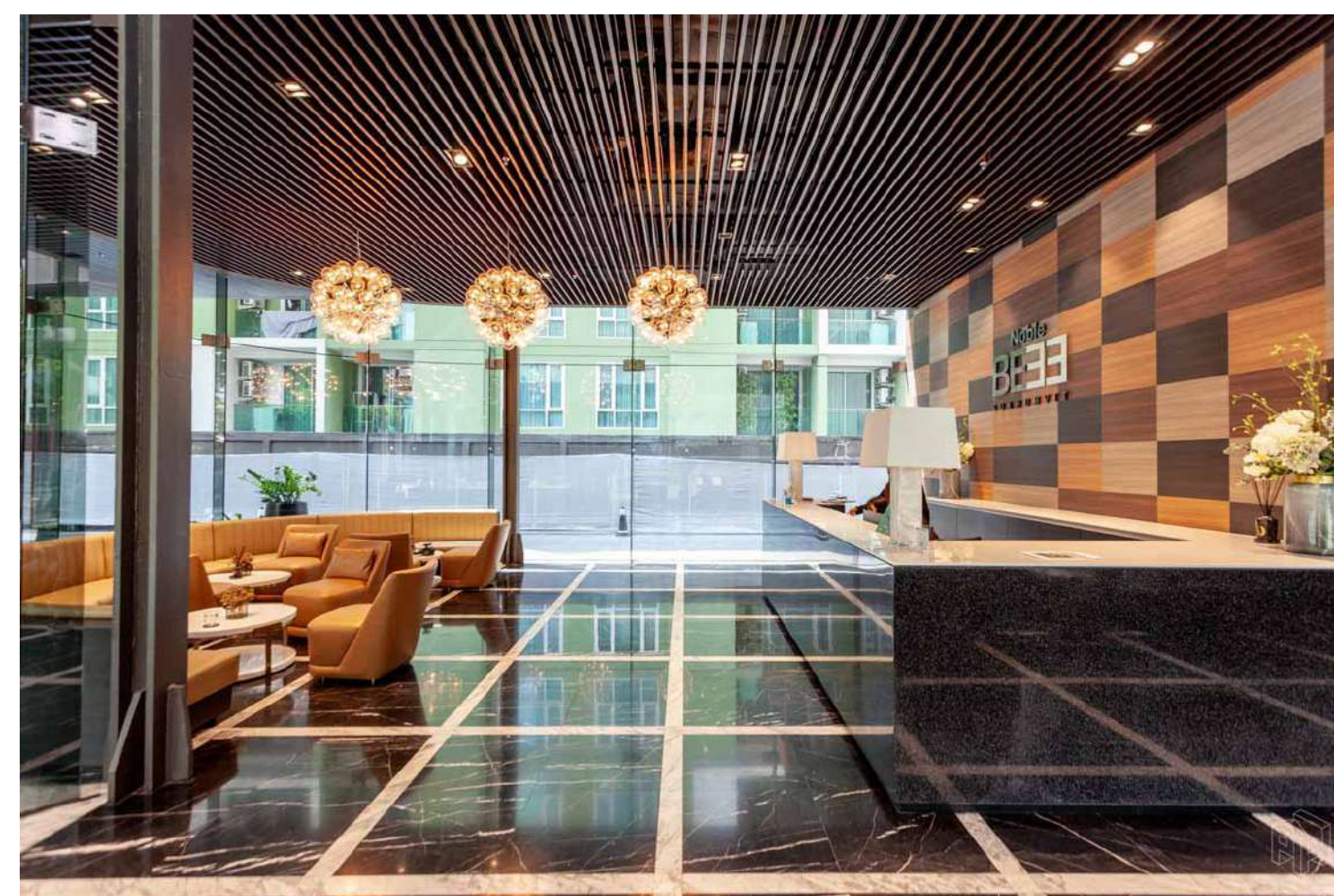
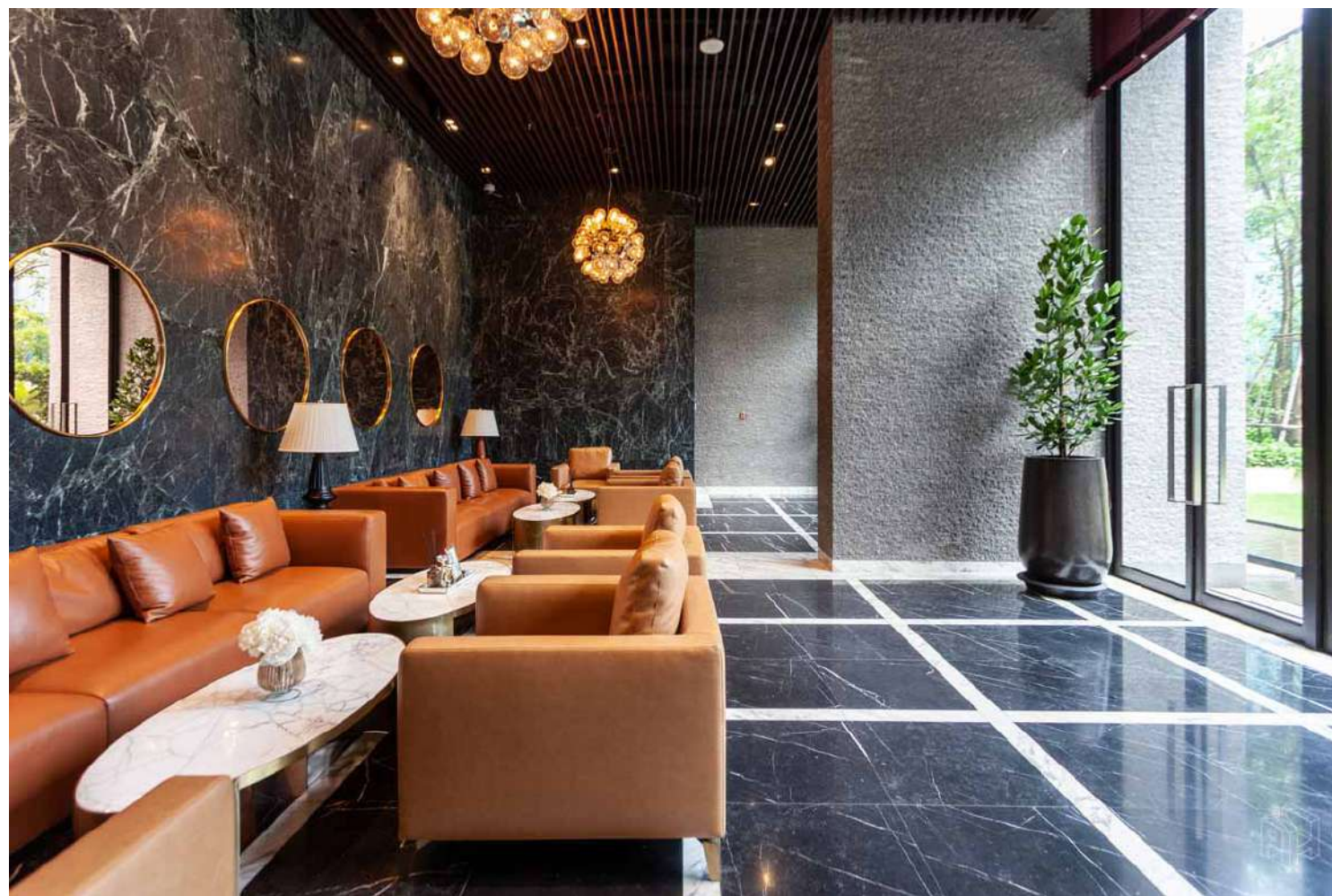
LAVIQ



NOBLE BE19



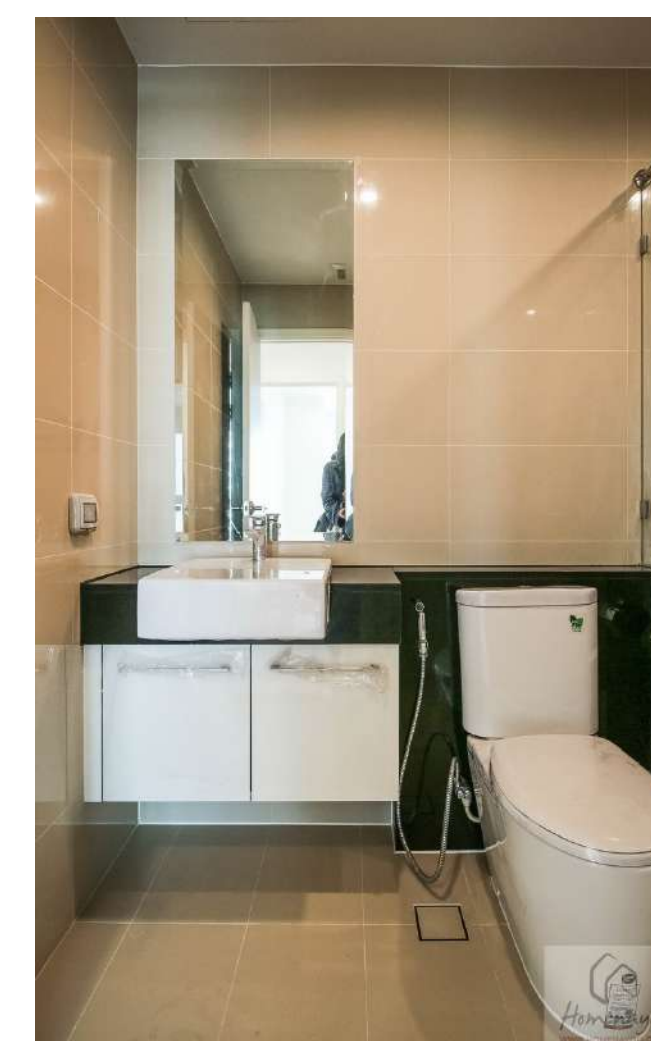
NOBLE BE33



MARQUE39



SUPALAI ELITE SATHORN



GRAND CENTERPOINT PATTAYA



SUPALAI MARE PATTAYA



AMANTA LUMPINI



CHINESE TEMPLE RAMA9



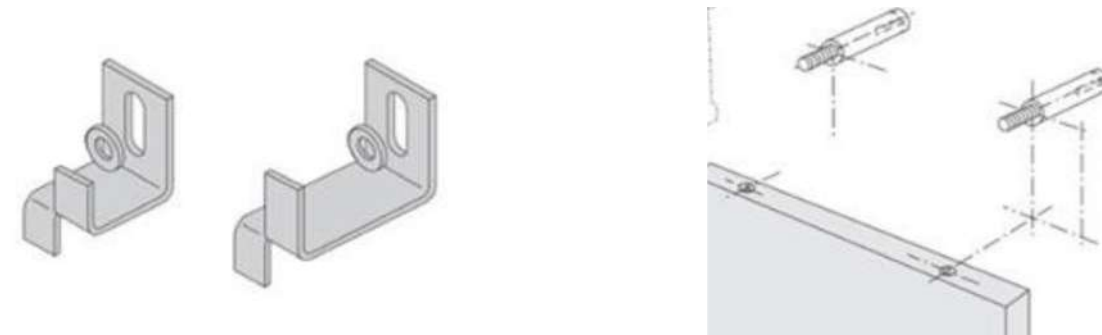
AIS TRAINING ARENA



METHOD INSTALLATION DRY PROCESS

On Concrete Wall Structure

Step 1 *Selection on Material : The stainless brackets and anchor bolt.*

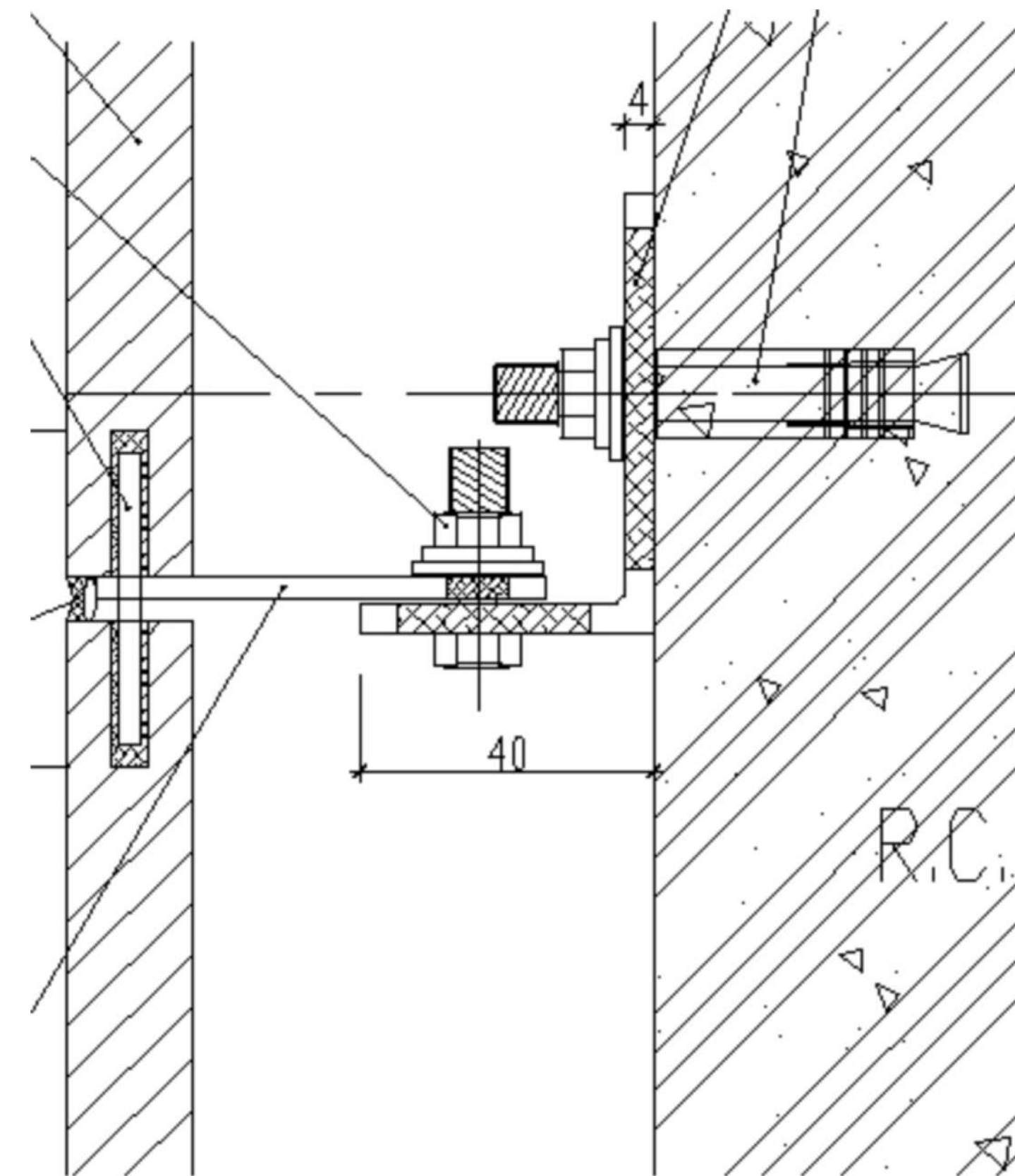


Step 2 *Site Preparation :*

- Clean all the dirt from the surface of the wall.
- Make sure it is properly dried up and the surface is not friable so that the pin could be firmly fixed in the hole drilled.

Step 3 *Installation Method :*

- Accurately locate the position of the hole.
- Drill a hole of appropriate depth and thickness according to the size of anchor bolt.
- Insert the expansion bolt into the hole.
- Insert the anchor in the angle to match the hole in the stone.
- Drill the stone and tighten the bracket by epoxy.
- Start from corner of the wall leaving a minimum gap of 2mm.
- Place the the stone and tighten the bolts properly.
- Similarly clad the entire wall.

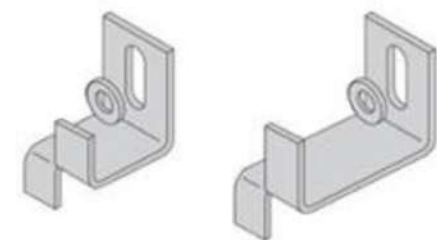


**Bracket size depend on finishing space.*

METHOD INSTALLATION DRY PROCESS

On Frame Structure

Step 1 Selection on Material : The stainless brackets.

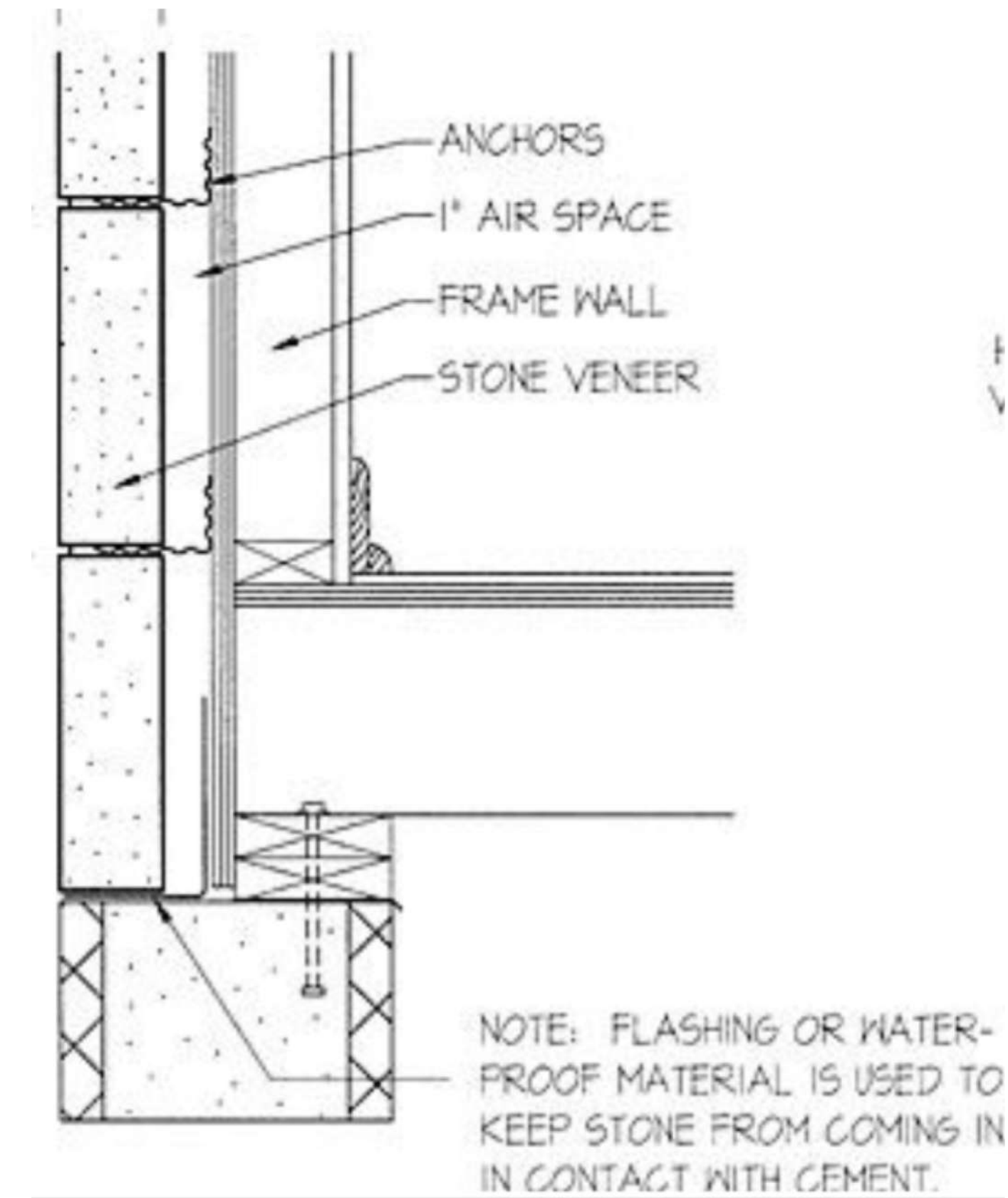


Step 2 Site Preparation :

- Set a main and support frame wall.
- Make sure it is properly stable.

Step 3 Installation Method :

- Accurately locate the position of support frame.
- Drill the stone and tighten the bracket by epoxy.
- Start from corner of the frame wall leaving a minimum gap of 2mm.
- Place the the stone and tighten the bracket with support frame properly.
- Similarly clad the entire wall.



*Bracket size depend on finishing space.

**Support frame depend on stone size.

THANK YOU

FOR MORE INFORMATION

AD'S BIZ STONES AND DECOR CO., LTD.

*25 SOI RAMINTRA 5-19,
ANUSAO-VARY, BANGKHEN,
BANGKOK 10220 THAILAND*



086-339-7197



[@ADSBIZSTONES](https://www.instagram.com/adsbizstones)



02-551-4435



[HTTPS://WWW.ADSBIZSTONES.COM](https://www.adsbizstones.com)



[ADSBIZSTONES@GMAIL.COM](mailto:adsbizstones@gmail.com)