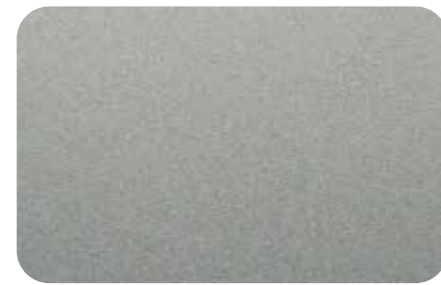


Metallic COLOR



*MA 001



*MA 002



*MA 004



MA 011



MA 012



MA 014



MA 021



MA 022



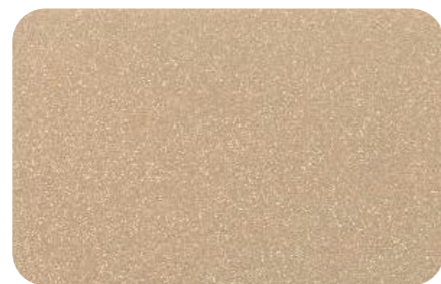
MA 031



MA 032



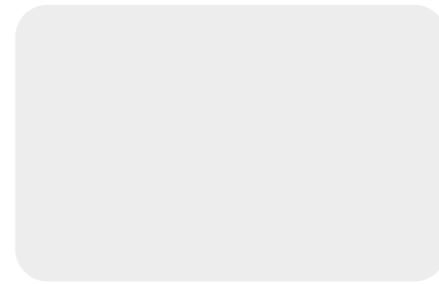
MA 033



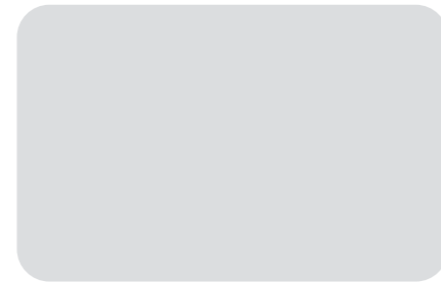
MA 034

*STANDARD STOCK ALTEX 403

Solid COLOR



*SA 001



SA 002



SA 003



SA 004



SA 011



SA 012



SA 013



SA 014



SA 021



SA 022



SA 023



SA 024



SA 025



SA 026



SA 027

VIVID & WOOD COLOR



VS 003



VS 004



VS 011



VS 012



VS 021



VS 022



VF 013



VF 031



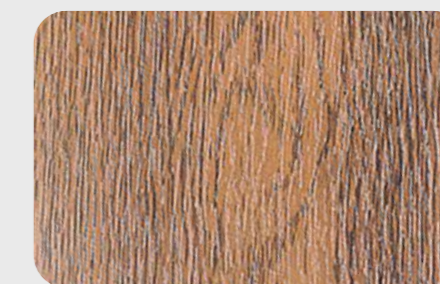
VF 041



VF 052



TB 001



TB 002



ALTEX 405

Specification

- 4.0 mm. thk. Aluminium Composite Panel consisting of
 - : 0.5 mm. thk. Aluminium Front side skin with PVDF Coat
 - : 0.5 mm. thk. Aluminium Back side skin with Polyester Coat
 - : 3.0 mm. thk. Black Polyethelene Core

Application

: Wall paneling for High-Rise and Big Buildings

Warranty

: 10 Years *

* Details of Terms and Reliabilities are in the certificate of Warranty

ALTEX 403

Specification

- 4.0 mm. thk. Aluminium Composite Panel consisting of
 - : 0.3 mm. thk. Aluminium Front side skin with High Performance Coat
 - : 0.3 mm. thk. Aluminium Back side skin with Polyester Coat
 - : 3.4 mm. thk. Black Polyethelene Core

Application

: Wall paneling for Medium and small size Offices and Commercial Buildings

Warranty

: 10 Years *

* Details of Terms and Reliabilities are in the certificate of Warranty



COMPOSITE PANEL | SMART ARCHITECTURE | ARCHITECTURAL CEILING | ARCHITECTURAL LOUVER | SOLID CLADDING | ARCHITECTURAL TEXTILES

www.fameline.com

View our latest products and offers by following us on



CERT NO. AJA00/2412

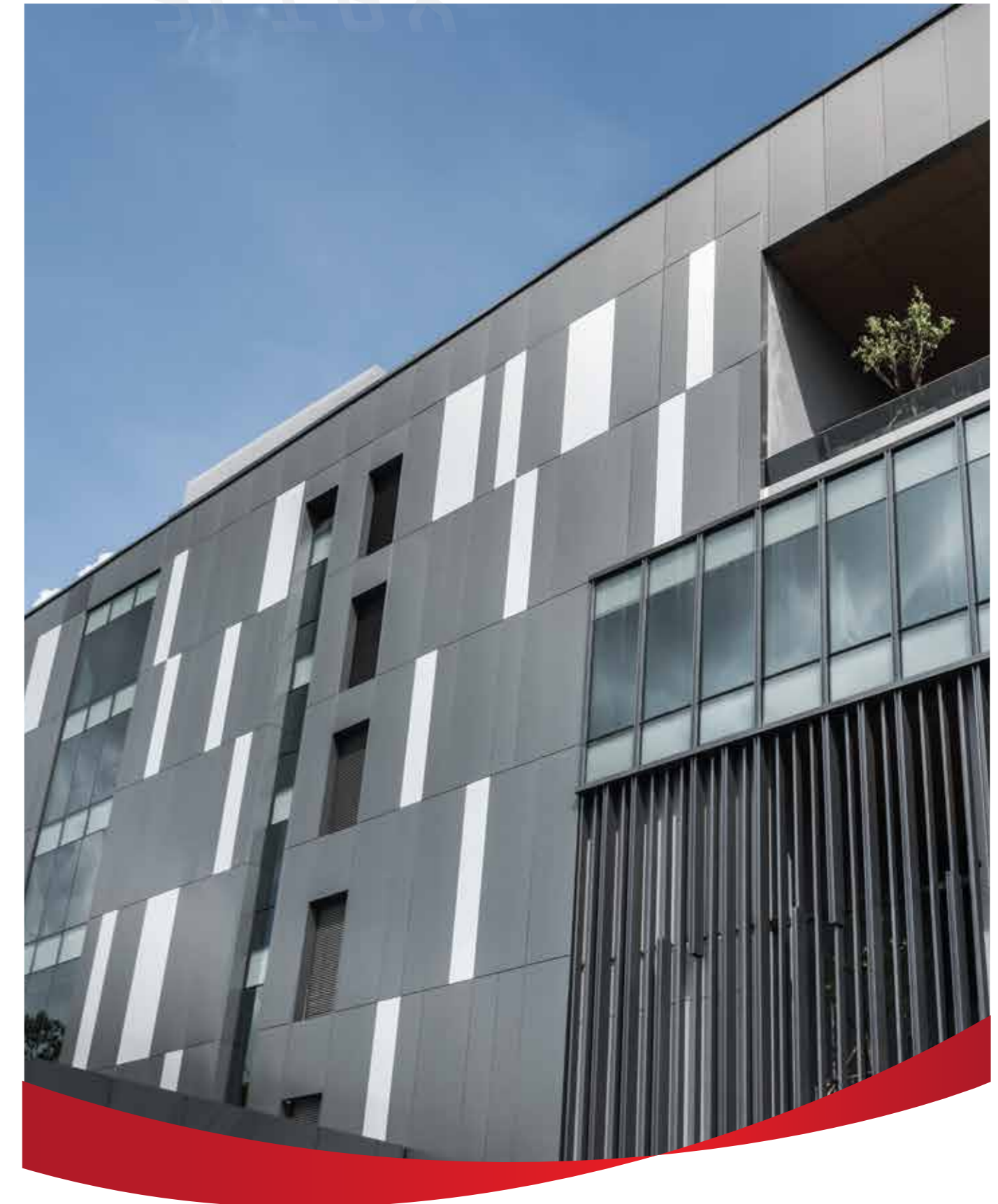


35/11 Kanchanapisek rd.
Dokmai Prawet,
Bangkok 10250

Tel: +66(0)27553641-5
Fax: +66(0)227553664
info@fameline.com



GREAT VALUE
GREAT QUALITY



THE ART OF **CLADDING** REFLECTING YOUR **INNOVATION**