



Kaishan Compressor Global





Engineering the Future

Saving Power

High Efficiency

First-rate processing and testing equipment meets the most demanding precision requirements.

Zhejiang Kaishan Compressor Co., Ltd. is the professional compressor enterprise with over 60 years of history, and it is also the largest air compressor manufacturer in Asia. Kaishan Compressor possesses powerful research capability, the R&D center is located in Seattle Jersey of USA, group of world's top compressor experts has developed large number of high efficiency and saving power technology. On 2015, Kaishan start to develop new market in south-east Asia, and decide to cooperate with Richland Group in Thailand, establish Kaishan (Thailand) Co., Ltd which become center of distributor in Thailand. We can satisfy all customers' demand on air compressor and accessory, and be able to help customers to solve all technical compressor problems.

Zhejiang Kaishan Compressor Co., Ltd. เป็นมืออาชีพด้านบีลมที่มีประวัติยาวนานกว่า 60 ปี เป็นโรงงานผลิตเครื่องบีลมที่ใหญ่ที่สุดในเอเชีย ไคชันคอมเพรสเซอร์มีความสามารถในการวิจัยที่มีประสิทธิภาพสูง โดยมีศูนย์วิจัยและพัฒนาอยู่ที่ Seattle, U.S - Jersey North America และมีวิศวกรผู้เชี่ยวชาญด้านบีลมชั้นนำของโลกร่วมทีม และมีการพัฒนาขึ้นอย่างต่อเนื่องจึงมีประสิทธิภาพที่สูงขึ้น และเทคโนโลยีด้านประหยัดพลังงานปี 2015 ไคชันเริ่มหาตลาดใหม่ในเอเชียตะวันออกเฉียงใต้ และได้ตัดสินใจเข้าร่วมกับกลุ่มบริษัท ริชแลนด์ในประเทศไทย ก่อกำเนิดบริษัทไคชัน (ประเทศไทย) ขึ้นมาเป็นศูนย์บริการและผู้จัดการจำหน่ายในประเทศไทย สามารถดูแลตอบสนองลูกค้าบีลมและอะไหล่ได้เป็นอย่างดี สามารถช่วยแก้ปัญหาด้านเทคนิคของบีลมได้ทั้งหมด



PMV Rotary Screw Compressor



Permeant Magnetic + Inverter
 High Efficiency, Power-Saving.
 Compact size
 High starting torque, low temp
 low noise

แม่เหล็กและอินเวอร์เตอร์
 ประสิทธิภาพสูงประหยัดพลังงาน
 ขนาดกะทัดรัด
 แรงบิดเริ่มต้นสูง, อุณหภูมิต่ำ
 เสียงเงียบ (ระดับเสียงต่ำมาก)

PMV SERIES SPECIFICATIONS



OHSAS18001
 ISO12100
 ISO14001 ISO19001

MODEL	Motor Power	PRESSURE	CAPACITY	NOISE LEVEL	DIMENSION	WEIGHT
	KW/HP	bar	m ³ /min	Db(A)	mm	kg
PMV-15	15/20	8	2.48	68	1200x830x1240	380
PMV-22	22/30	8	3.62	68	1200x830x1290	480
PMV-37	37/50	8	6.1	69	1400x1000x1540	710
PMV-55	55/75	8	10	70	1500x1160x1700	990
PMV2-55	55/75	8	10.4	70	2100x1200x1330	1100
PMV2-75	75/100	8	14.3	70	2160x1220x1580	1450

Krsp Single Stage Rotary



Radial Centrifugal Cooling Fan
 Larger rotor profile, lower rotating speed
 Superior Reliability
 Marathon motor
 KERRY USA air filter and coolant
 TOUCH SCREEN CONTROLLER
 20 HP - 400 HP, 8 BAR - 13 BAR

พัฒนาระบายความร้อนแบบ Radial Centrifugal
 รายละเอียดท่อนหมุนขนาดใหญ่ การหมุนรอบต่ำ
 ความเชื่อถือได้
 มอเตอร์มาราathon
 กรองอากาศและน้ำมันหล่อลื่นใช้ของ Kerry อเมริกา
 ชุดควบคุมใช้แบบสัมผัส
 20-400 แรงม้า แรงดันใช้งาน 8-13 บาร์

KRSP SERIES SPECIFICATIONS



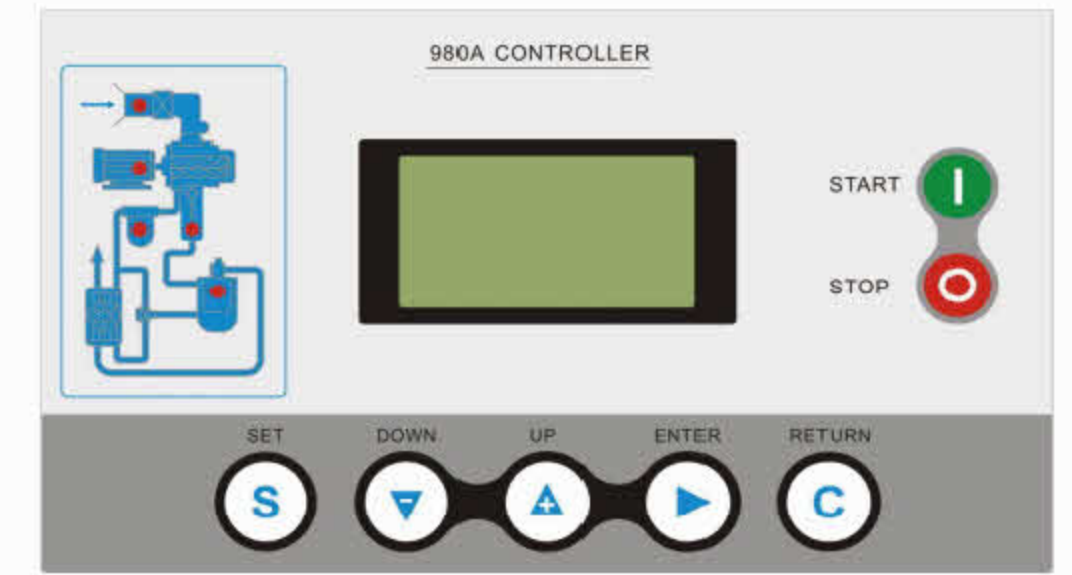
MODEL	Motor Power	PRESSURE	CAPACITY	NOISE LEVEL	DIMENSION	WEIGHT
	KW/HP	bar	m ³ /Min	Db(A)	mm	kg
KRSP18	18 / 25	8	3.37	69	1780x975x1280	760
KRSP22	22 / 30	8	3.87	69	1780x975x1280	790
KRSP37	37 / 50	8	6.8	70	1810x1160x1370	1070
KRSP55	55 / 75	8	10.5	71	2260x1410x1720	1740
KRSP75	75 / 100	8	14.2	73	2480x1520x1820	2300

Kaitain Series Screw Air Compressor



2.6 CONTROLLER PANEL LAYOUT

Standard LG compressor is equipped with microprocessor control panel.



OHSAS18001
ISO12100
ISO14001 ISO19001

Superior Reliability

Marathon motor IE3 / IP55

KERRY USA air filter and coolant

Larger rotor profile

Interactive controller system

20 HP - 400 HP, 8 BAR - 13 BAR

ความเชื่อถือได้

มอเตอร์มาราathon อเมริกา IE3/IP55

กรองอากาศและน้ำมันหล่อลื่นใช้ของ Kerry อเมริกา

สกรูมีขนาดใหญ่

ระบบควบคุมแบบโต้ตอบ

20-400 แรงม้า แรงดันใช้งาน 8-13 บาร์

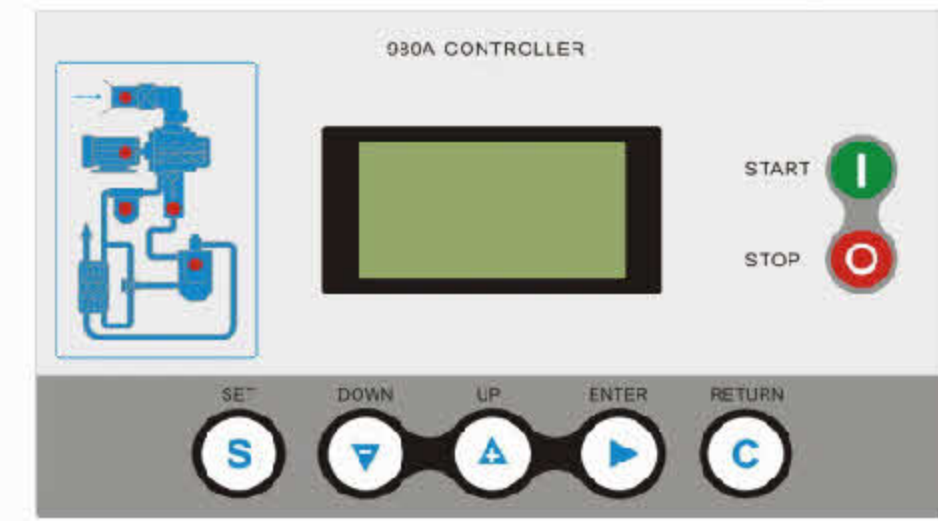
MODEL	Motor Power	PRESSURE	CAPACITY	NOISE LEVEL	DIMENSION	WEIGHT
	KW/HP	bar	m ³ /Min	dB(A)	mm	kg
JN15	15/20	8	2.5	68	1400x850x1150	700
JN22	22/30	8	3.48	68	1570x880x1210	800
JN37	37/50	8	5.95	69	1780x1050x1460	1200
JN45	45/60	8	7.75	70	2580x1210x1510	1750
JN55	55/75	8	10	70	2580x1210x1510	1800
JN75	75/100	8	14.18	72	2990x1520x1850	2500

LG Series Screw Air Compressor



2.6 CONTROLLER PANEL LAYOUT

Standard LG compressor is equipped with microprocessor control panel.



COMPETITIVE PRICING

Advance micro computer protect system

IE3/IP55 HIGH EFFICIENCY MOTOR

Versatile Package Control System

interactive controller system

10 HP - 400 HP, 8 BAR - 13 BAR

ราคาที่แข่งขันได้

ติดตั้งระบบป้องกันคอมพิวเตอร์

มอเตอร์ประสิทธิภาพสูงระดับพรีเมียม ดัชนีป้องกัน IE3/IP55

ระบบควบคุมรวมอเนกประสงค์

ระบบควบคุมแบบโต้ตอบ

10-400 แรงม้า แรงดันใช้งาน 8-13 บาร์

***B=BELT TYPE, G=DIRECT TYPE**

MODEL	Motor Power	PRESSURE	CAPACITY	NOISE LEVEL	DIMENSION	WEIGHT
	KW/HP	bar	m ³ /Min	dB(A)	mm	kg
LG-2.4/8B	15/20	8	2.40	71	1060x800x1230	550
LG-3.6/8G	22/30	8	3.60	72	1420x850x1110	650
LG-6.0/8G	37/50	8	6.20	73	1630x910x1220	1050
LG-7.5/8G	45/60	8	7.50	74	1770x1000x1300	1100
LG-10.5/8G	55/75	8	10.00	74	1950x1160x1550	1500
LG-13/8G	75/100	8	13.00	75	2440x1160x1620	1900

Reciprocating Air Compressor

KA series

This series air compressor widely used in pneumatic lock, pneumatic tool, the inflation, blowing process, spray, sand blasting and fluidic element.



Specification for KA series

Model	Working Pressure		Capacity		Motor Power		Cylinder Dia*Qty	Air Tank L	Weight kg	Dimension mm	
	bar	psi	m ³ /min	cfm	kW	hp					
KA-3	8	116	0.30	11	2.2	3	φ80*2	130	150	1310*500*960	
KA-4			0.40	14	3	4		120	160		
KA-5.5			0.52	19	4	5.5	φ80*3	170	250	1425*560*1011	
KA-7.5			0.67	24	5.5	7.5			300	1368*560*1050	
KA-10			1.00	36	7.5	10	φ100*3	230	400	1554*650*1140	
KA-15			1.51	54	11	15			500	1635*700*1220	
KA-20			2.00	71	15	20	φ120*3	410	600	1800*800*1300	
KA-25			2.50	89	18.5	25			650	1800*800*1370	
KA-30			3.00	107	22	30	LPφ155*2	HPφ120*1	480	700	1900*850*1400

※ We reserve the right to change specifications without notice in the interest of product improvements.

KRST Series Screw Air Compressor



MODEL	CAPACITY	POWER	PRESSURE	MAXIMUM	SOUND	DIMENSIONS (IN.)			WEIGHT	STARTER
						L	W	H		
KTA	ACFM	HP	PSI	PSI	dB(A)	L	W	H	LB	
KRST-7.5-115	25	7.5	115	125	67	74	26	64	1323	Direct
KRST-7.5-125	25	7.5	125	135	67	74	26	64	1323	Direct
KRST-7.5-150	22	7.5	150	160	67	74	26	64	1323	Direct
KRST-10-115	37	10	115	125	67	74	26	64	1433	Direct
KRST-10-125	37	10	125	135	67	74	26	64	1433	Direct
KRST-10-150	33	10	150	160	67	74	26	64	1433	Direct
KRST-15-115	56	15	115	125	68	75	28	66	1764	Y-Delta
KRST-15-125	56	15	125	135	68	75	28	66	1764	Y-Delta
KRST-15-150	48	15	150	160	68	75	28	66	1764	Y-Delta
KRST-20-115	84	20	115	125	68	75	28	66	1940	Y-Delta
KRST-20-125	83	20	125	135	68	75	28	66	1940	Y-Delta
KRST-20-150	66	20	150	160	68	75	28	66	1940	Y-Delta

Refrigerated Air Dryer

Air Dryer, according to the principle of refrigeration dehumidification, the compressed air is forced through the evaporator heat exchange and cooling and make air oil and water in the compressed air after isobaric cooling, then condense into liquid water and oil with dust, through excluding system automatic drainer to get clean compressed air.

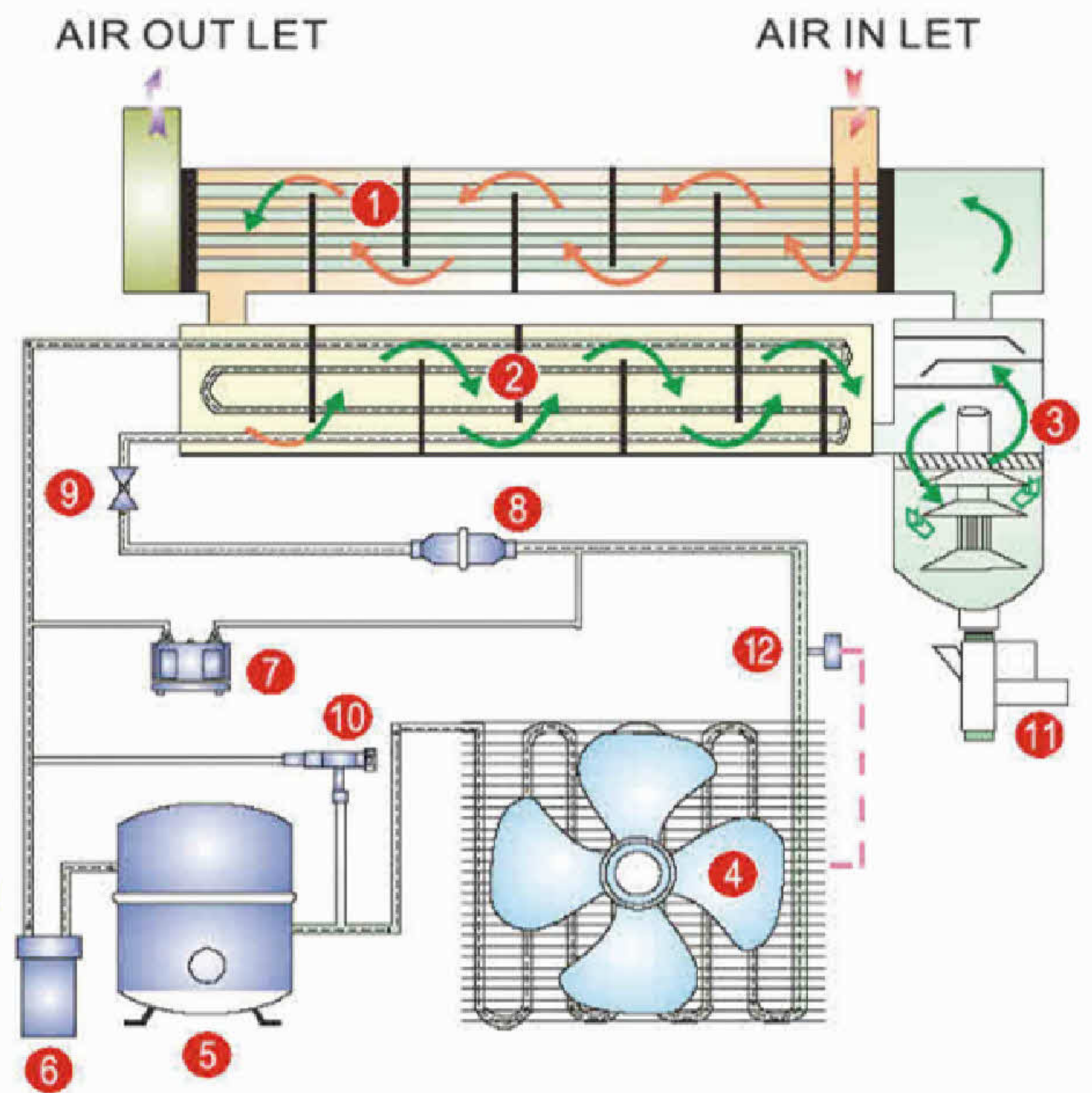


Specifications

MODEL	CAPACITY	Motor Power	Voltage	AIR PIPE	SIZE	WEIGHT
	m ³ /min	HP	V/50HZ		mm	kg
KSR-014HG	1.8	0.35	220	DN20(G3/4")	400X700X640	55
KSR-028HG	2.8	0.5	220	DN25(G1")	400X800X780	65
KSR-038HG	3.8	0.75	220	DN25(G1")	400X800X780	68
KSR-071HG	6.8	1.5	220	DN40(G1 1/2")	500X960X880	95
KSR-110HG	11.5	2.5	220	DN50(G2")	700X860X1000	135
KSR-150HG	16	4	380	DN65(G2 1/2")	700X1100X1000	165
KSR-210HG	22.8	5	380	DN80(F3)	700X1300X1160	250
KSR-250HG	28.5	6	380	DN80(F3)	700X1500X1160	300
KSR-304HG	35	8	380	DN80(F3)	1700X1000X1260	400

Operation Process

1. Pre-cooler / Heat Exchanger
2. Evaporator
3. Air / Water Separator
4. Air-cooled Condensator
5. Refrigerant Compressor
6. Refrigerant Reservoir
7. High-low Pressure switch
8. Dry Filter
9. Expansion Valve (Capillary)
10. Hot Gas Bypass Valve
11. Electric Auto-Drain
12. High Pressure Switch



Contamination

Application

Remove 99% Water

Oil Content : 0.5 PPM

Dust Content : < 1 um



Normal blow and cooling

Dew Point : +3°C - +10°C

Oil Content : 0.01 PPM

Dust Content : < 0.01 um



Painting work
Pneumatic tool
Control Valve
Conveying
Sifting

Dew Point : +3°C - +10°C

Oil Content : 0.003 PPM

Dust Content : < 0.01 um



Diving
Breathing
Food industry
Pharmaceutical
Cosmetic

Dew Point : -20°C - -70°C

Oil Content : 0.01 PPM

Dust Content : < 0.01 um



Printing
Precision tool
Nuclear Industry
Aerpspace

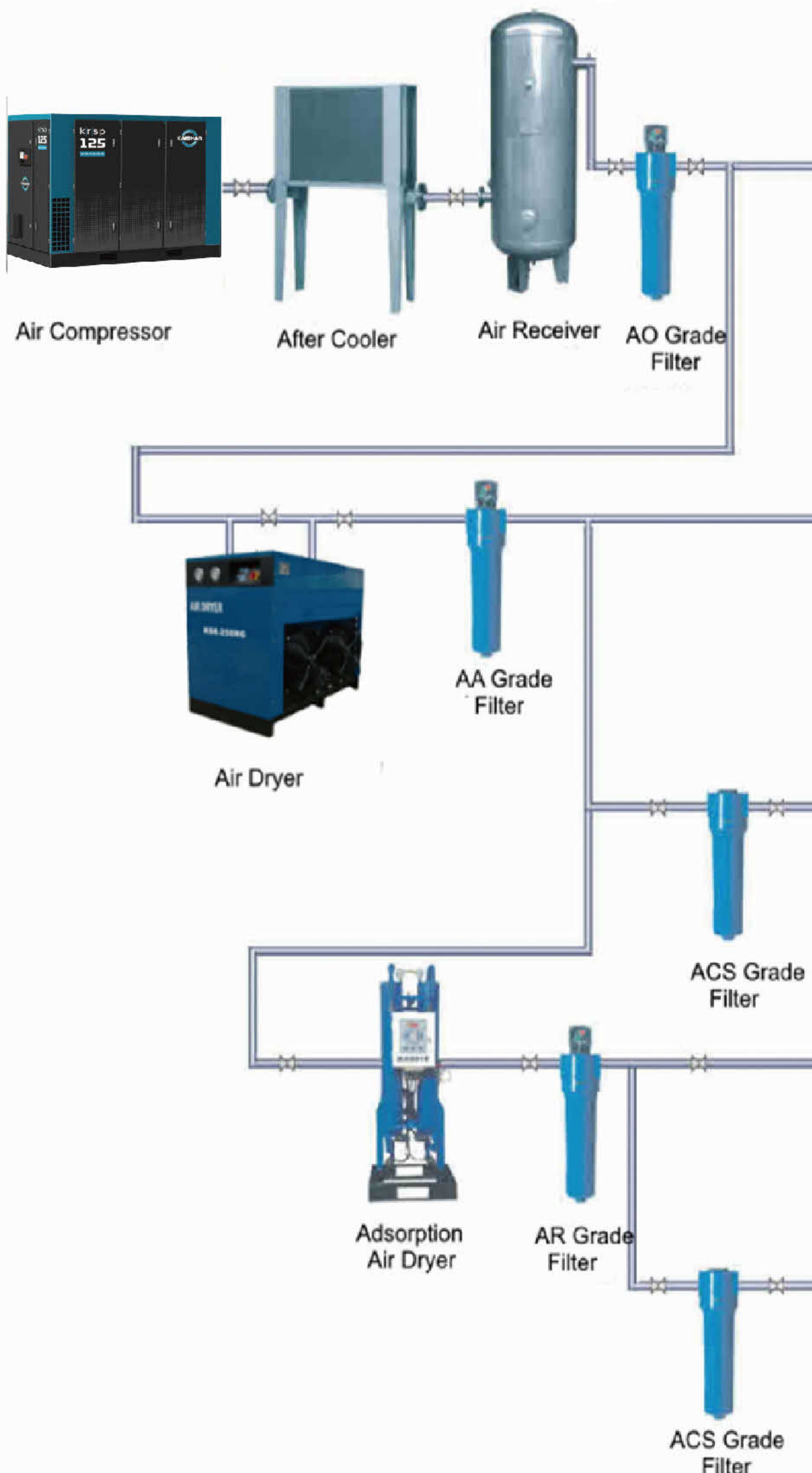
Dew Point : -20°C - -70°C

Oil Content : 0.003 PPM

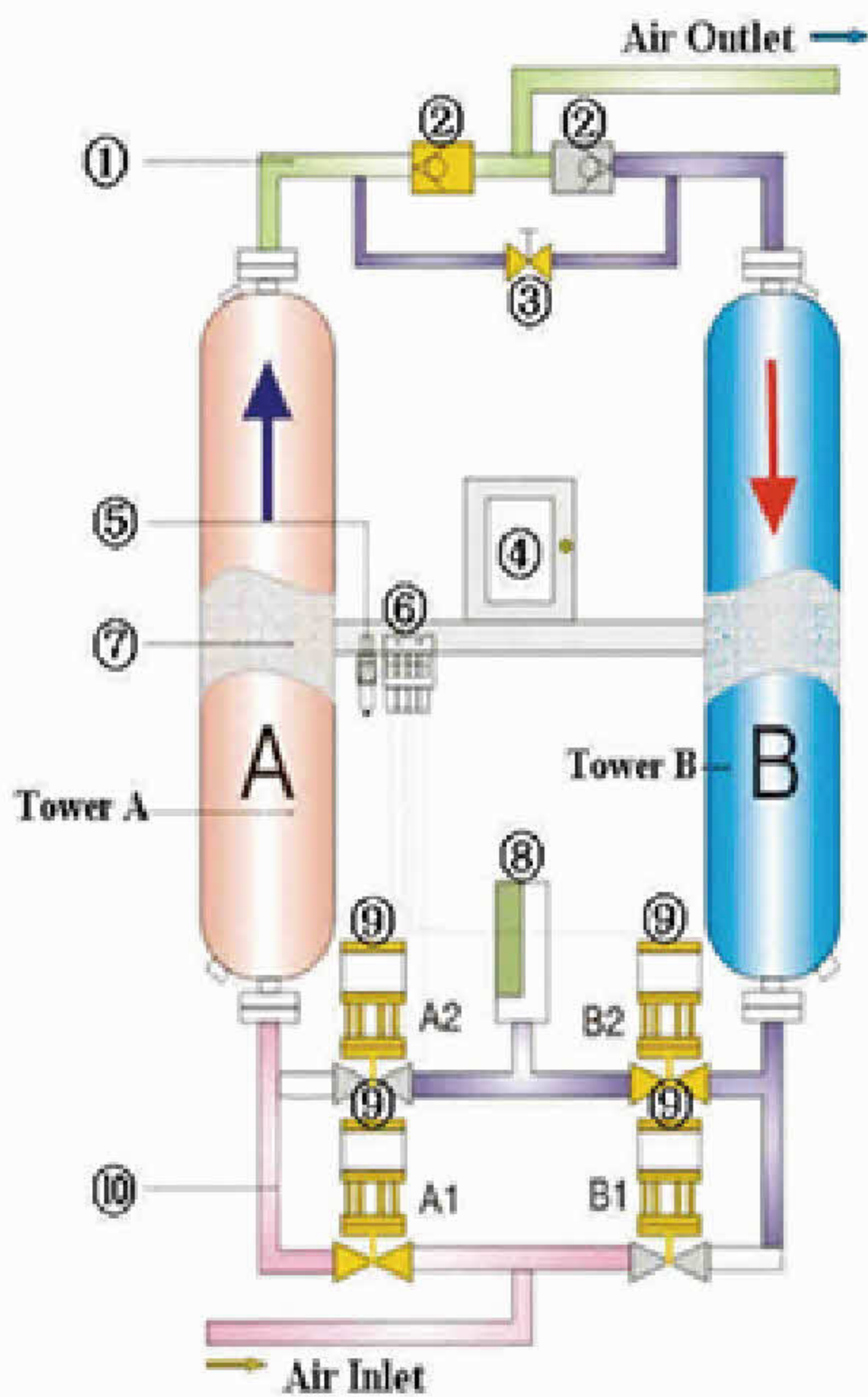
Dust Content : < 0.01 um



Biological
Fermentation
Brewing
Sterilization



Adsorption Air Dryer



1. Upper Tube System
2. Check Valve
3. Throttle Valve
4. Controller
5. Pneumatic Control Valve
6. Solenoid Valve
7. Absorbent
(activated alumina and molecular sieves)
8. Muffler
9. Pneumatic (Valve A1, A2, B1, B2)
10. Underside Tube System

Working Conditions :

- ◆ Working pressure 0.6 - 1.0MPa
 - ◆ Pressure dew point : - 20°C ~ - 40°C
 - ◆ Air inlet temperature : 0°C ~ 45°C
 - ◆ Power supply : KSD0005-KSD0120 : 220v/50hz/1ph
KSD0150-KSD2000 : 380v/50hz/3ph
 - ◆ Compressed air consumption : ≤14%
 - ◆ Pressure drop : ≤0.025Mpa
 - ◆ Absorbent: activated alumina & molecular sieves
- If need the heatless adsorption air dryer is not in standard, please contact the supplier.



Model	Air Flow Rates		Air connection	Net Weigh	Dimension (LxWxH)
	Nm ³ /min	CFM			

KSD 0005	0.8	28	DN15	70	560x350x1420
KSD 0010	1.8	64	DN20	80	600x350x1720
KSD 0020	2.8	99	DN20	100	700x450x1750
KSD 0030	3.8	134	DN25	130	800x450x1800
KSD 0040	5.5	194	DN40	250	1000x650x1800
KSD 0060	6.8	240	DN40	280	1000x650x1800
KSD 0080	8.8	311	DN50	450	1060x760x2000
KSD 0100	11.5	406	DN50	500	1160x760x1900
KSD 0120	14	494	DN65	550	1160x750x2050
KSD 0150	16	565	DN65	580	1260x800x2000
KSD 0200	22.8	805	DN80	860	1500x1000x2050
KSD 0250	28.5	1007	DN80	1200	1600x1000x2180
KSD 0300	35	1236	DN80	1600	1700x1100x2200
KSD 0400	45	1589	DN100	1900	1800x1100x2400
KSD 0500	55	1943	DN100	2300	2100x1100x2500
KSD 0600	65	2296	DN125	2800	2400x1200x2650
KSD 0800	85	3002	DN150	3400	2600x1300x2900
KSD 1000	105	3709	DN150	4100	3000x1500x3000
KSD 1200	120	4238	DN200	4500	3200x1600x3000
KSD 1600	160	5651	DN200	6000	3800x1800x3000
KSD 2000	200	7064	DN250	7500	4200x2000x3000

Air Filter

Compressed air Precision filter and self-cleaning air compressor suction filter are main filters of Zhejiang Kaishan Pressure Vessel Co.,Ltd. The America Hankison filter is applied to Kaishan Compressed air Precision filter. The completely filter grade offers a widely application scope for filter.

Self-cleaning air compressor suction filter is the new product that developed from industrially advanced country. Kaishan self-cleaning air compressor suction filter has studied the experience of similar products at home and abroad and widely collect advantages of foreign well-known products. It makes Kaishan product with full automatic control self-cleaning filter back functions.



Specifications

Model	Pipe Orifice	Flow Capacity Nm ³ / min	Filter Element No	Dimension mm			Weight kg	Outside View
				O	W	H		
KSAF-1	Rc1/2"	1.2	1		96	200	2.8	Thread
KSAF-2	Rc1"	2.5	1		96	235	3.8	
KSAF-3	Rc1"	3.6	1		138	331	4.8	
KSAF-5	Rc1.5"	5.5	1		138	432	5.8	
KSAF-6	Rc1.5"	6.8	1		138	432	5.8	
KSAF-12	Rc2"	12	1		174	533	7	
KSAF-15	DN65	16	1	159	399	950	49	Flange
KSAF-20	DN65	22	1	159	399	1110	49	
KSAF-25	DN80	26.8	1	159	399	1250	59	
KSAF-30	DN80	32	2	219	459	985	76	
KSAF-40	DN100	43.5	2	219	459	1130	76	
KSAF-50	DN100	53	3	273	513	1190	106	
KSAF-60	DN125	67	3	273	513	1190	106	
KSAF-80	DN125	90	4	325	565	1220	135	
KSAF-100	DN150	110	5	412	637	1290	181	
KSAF-120	DN150	130	5	412	637	1445	181	
KSAF-150	DN200	160	7	462	762	1630	213	
KSAF-200	DN200	210	9	462	762	1630	244	
KSAF-250	DN250	250	11	512	812	1750	274	
KSAF-300	DN250	300	13	562	832	1800	312	
KSAF-350	DN250	350	16	662	962	1835	371	
KSAF-400	DN300	400	18	662	962	1915	427	
KSAF-450	DN350	450	21	712	1012	1915	427	
KSAF-500	DN350	500	23	712	1012	1980	427	
KSAF-550	DN400	550	26	812	1116	2000	493	
KSAF-600	DN400	600	28	812	1116	2000	493	

Specifications

Filter Element	Filter Type	Filter Fineness um	Residual Oil Content ppm	Initial Pressure Drop MPa
HC	Primary prefiltering, filter dust particles and water mist, oil mist	3	5	0.007
HT	Efficient general filter,filter dust particles and water mist, oil mist	1	1	0.007
HA	Efficient Oil remove,filter dust particles and water mist, oil mist	0.01	0.01	0.01
HF	Super efficient filter,filter dust particles and water mist, oil mist	0.01	0.003	0.017
HH	Carbon filter,filter out particles smell, water mist, oil mist	0.01	0.003	0.017

Nitrogen Gas Generator



PSA nitrogen gas generator is composed of five parts:

A. Compressed Air Purification System

To remove dust, water and oil from the compressed air.

B. Air Buffer Tank

Ensure the stable supply of air for O_2/N_2 separation system.

C. O_2/N_2 Separation System

It's the core of the whole equipment. It produces N_2 with the PSA technology.

D. Nitrogen Storage Tank

It storage N_2 for ensuring the supply smoothly and continuously.

E. Electrical Control System

It's the control centre of the whole equipment.

A. Compressed Air Purification System

- (1) First-class Filters
- (2) Frozen Dehydrator
- (3) Second-class Filters
- (4) Third-class Filters
- (5) Effective Degreaser

B. Air Buffer Tank

- (6) Air Tank

C. O_2/N_2 Separation System

- (7) Absorption tower A
- (8) Absorption tower B
- (9) Closing Valves
- (10) Pneumatic Valve
- (11) Guided Tracheal
- (12) Muffler
- (13) Carbon Molecular Sieve
- (14) Air Cushion
- (15) Air Distribution
- (16) Wide Gas Collection
- (17) Pressure Regulating Valve
- (18) Cylinder
- (19) Base

D. Nitrogen Buffer System

- (20) Nitrogen Gas Tank
- (21) Second-class Filters
- (22) Flowmeter
- (23) Pressure Regulating Valve
- (24) Emptying Valve
- (25) Export Control Valve

E. Electrical Control System

- (26) Nitrogen Analyzer
- (25) Automatic Alarm
- (25) PLC Controller
- (25) Electromagnetic Valve

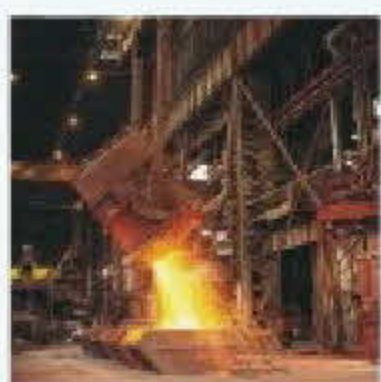
Nitrogen gas is the main component to air. Because it's difficult to react with other chemical substances, nitrogen is usually used as the protection gas in production, and is widely used in electronics, chemicals, coals, foodstuffs, pharmacies, magnetic materials, cables, metal processing, ports, transports, heat treatments, metallurgy, aviation, tires and other industries.

Applications of Nitrogen Gas



Electronics

The production protection of package, LED/LCD, battery, especially in the lead-free soldering of SMT.



Metal Heat Treatments

Metal smelting, steel pipe, mesh oven, liquid aluminum cleaner, metal thread, cable, metal cutting & cooling protection.



Oils

Oil extraction, refining, transportation, handling, storage and cleaning, almost every step needs to use nitrogen gas.



Pharmacies

The production protections of drugs.



Chemicals

The production protection of PVC, PE, polyethylene, silicone, rosin, plastic, ink, ethanol, hydrogen peroxide, and so on



Mines

Widely used in mine of gold, silver and rare soil, especially in coal mine for fire-prevention areas.



Foodstuffs

Cake, bread, potato chips, cookies, fragrance, pickles, pie, coffee, beer, cooking oil, and so on.



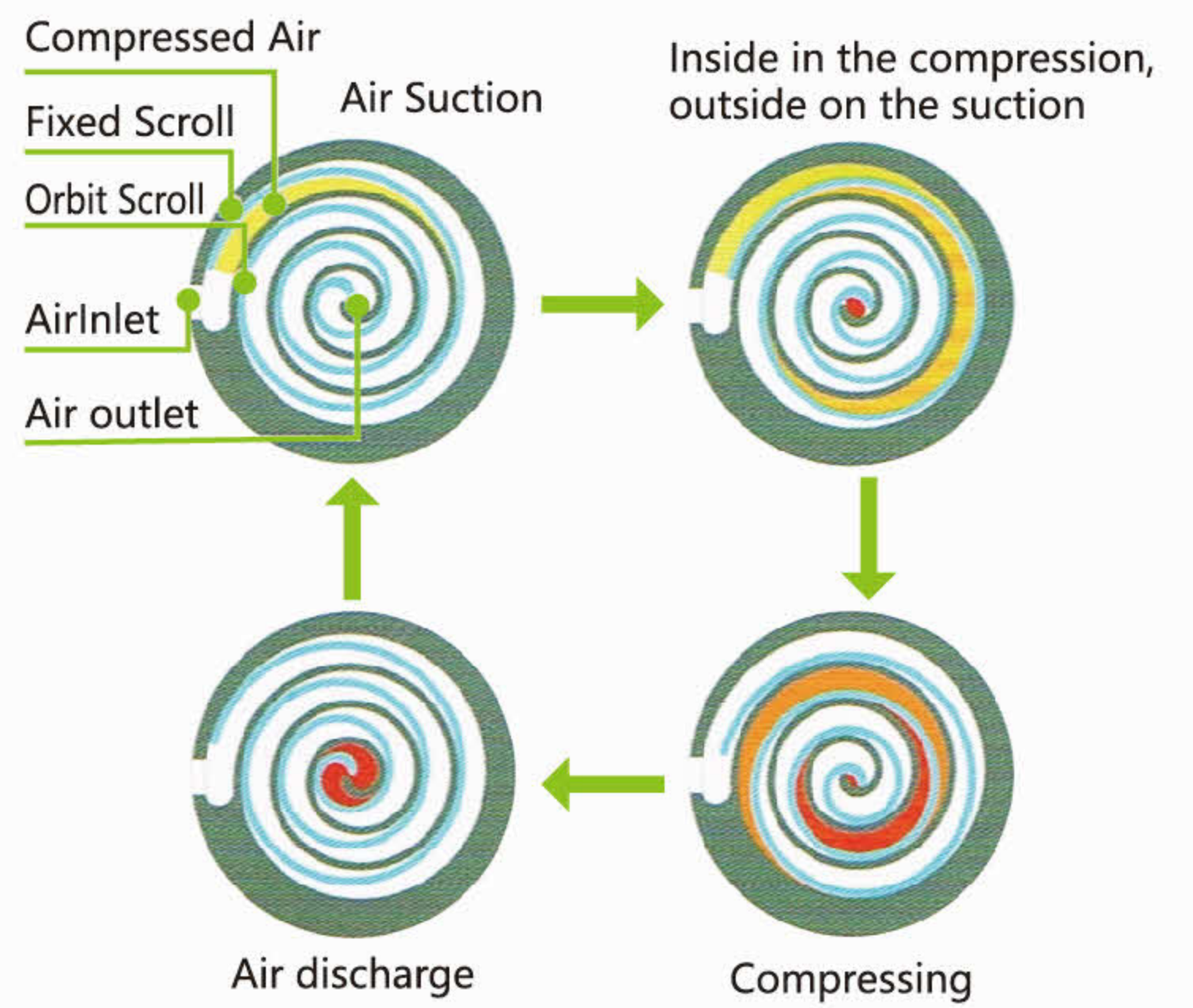
Float glass

The production protections of float glass

Kaishan Scroll Air Compressor



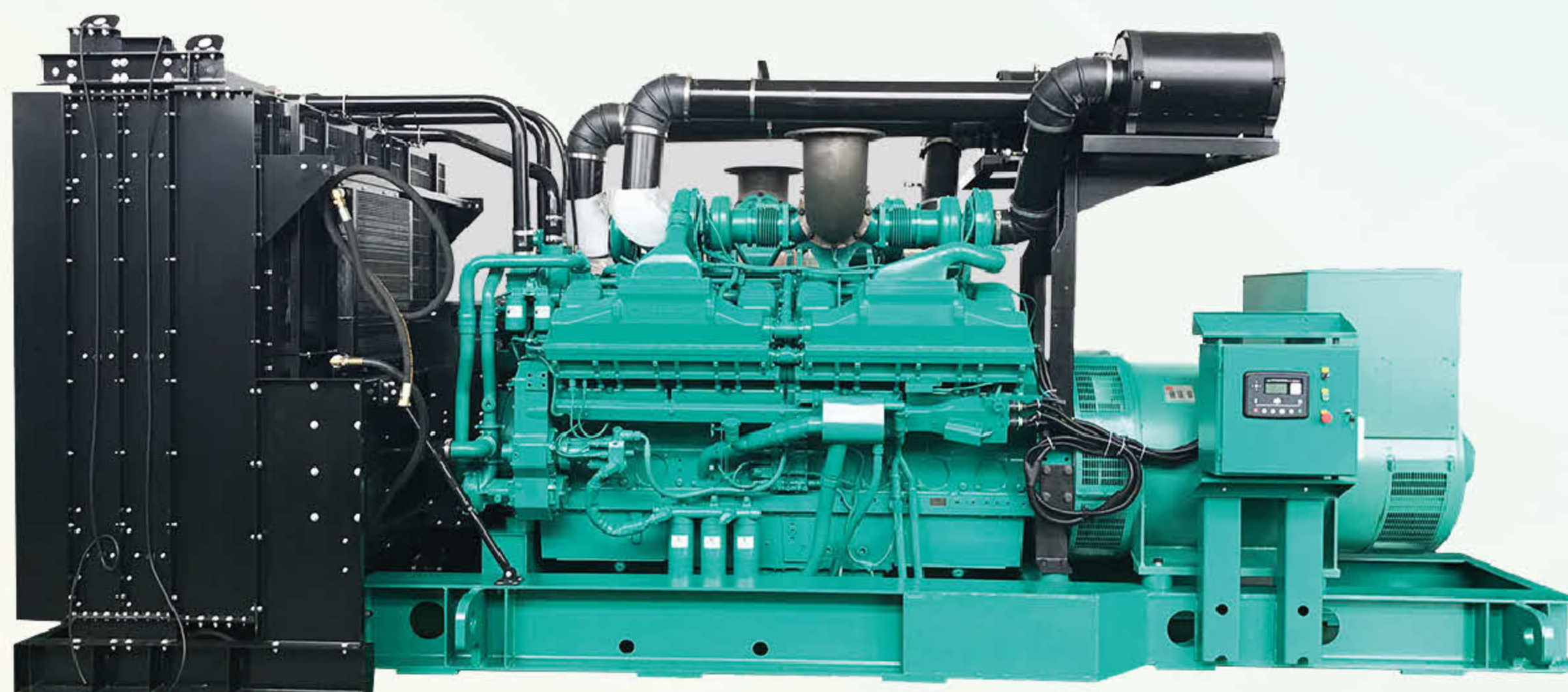
Working Principle:



Product Specification Sheet

MODEL		WX-0.6/8	WX-0.8/10	WX-1.0/8	WX-1.5/8
Air-delivering cap.(m ³ /Min)		0.6	0.8	1.0	1.5
Air-delivering pressure (Bar)		8	10	8	8
Air-delivering temp (°C)		ambient temp + 50			
Noise dB(A)		60±3	60±3	60±3	60±3
Oil content (ppm)		≤3, slightly			
Electric motor	Rotate speed(rpm)	2900			
	Power(Kw/Hp)	4/6	7.5/10	7.5/10	11/15
	Starting mode	direct coupling, direct starting up			
	V/Hz/Ph	380V/50Hz/3Ph			
Size L*W*H (mm)		935*540*695	960*560*800		1080*640*880
Weight (Kg)		185	238	238	363

Diesel Generator



Booster Air Compressor



Model	Bare model	Inlet pressure Mpa	Outlet pressure Mpa	Inlet capacity (low pressure) m3/min	Outlet capacity (high pressure) m3/min	Model power KW	Speed r.p.m	Size (L x W x H)mm	Weight Kg
BC108	BC1221	0.7	3.5	0.85	0.72	5.5	670	935x900x1325	330
BC180	BC1621	0.7	3.0	1.4	1.2	5.5	670	935x900x1325	350
BC180	BC1621	1.0	3.0	2	1.85	7.5	670	935x900x1325	350
BC260	BC1621	0.5	2.0	1.5	1.3	5.5	950	935x900x1325	360
BC260	BC1621	0.7	3.0	2	1.7	7.5	950	935x900x1325	370
BC260	BC1621	1.0	3.5	2.8	2.4	9	950	935x900x1325	380
BC260	BC1621	1.3	4.0	3.5	3.1	9	950	935x900x1325	380
BC330	BC2021	0.5	2.0	1.9	1.6	5	800	935x900x1325	390
BC330	BC2021	0.7	3.0	2.8	2.1	9	800	935x900x1325	400
BC330	BC2021	1.0	3.5	3.6	3.1	11	800	935x900x1325	430
BC330	BC2021	1.3	4.0	4.5	4.0	15	800	935x900x1325	450
BC430	BC1631	0.5	2.0	2.5	2.1	11	1050	1330x735x1600	390
BC430	BC1631	0.7	3.0	3.4	2.8	11	1050	1330x735x1600	440
BC430	BC1631	1.0	3.5	4.6	4.0	15	1050	1330x735x1600	460
BC430	BC1631	1.3	4.0	5.9	5.2	15	1050	1330x735x1600	460
BC560	BC2031	0.5	2.0	3.3	2.8	11	900	1330x735x1600	450
BC560	BC2031	0.7	3.0	4.4	3.6	15	900	1330x735x1600	470
BC560	BC2031	1.0	3.5	6	5.2	18.5	900	1330x735x1600	500
BC560	BC2031	1.3	4.0	7.6	6.7	22	900	1330x735x1600	510
BC650	BC2031	0.5	2.0	3.8	3.2	15	1050	1330x735x1600	470
BC650	BC2031	0.7	3.0	5.1	4.2	18.5	1050	1330x735x1600	500
BC650	BC2031	1.0	3.5	7	6.0	22	1050	1330x735x1600	510
BC650	BC2031	1.3	4.0	8.9	7.8	22	1050	1330x735x1600	510
BC-5.6/35-10	BC2041	1.0	3.5	6.5	5.6	18.5	585	2070x1000x1115	835
BC-7.1/40-13	BC2041	1.3	4.0	8.3	7.1	22	585	2070x1000x1115	840
BC-6.0/35-10	BC2041	1.0	3.5	7	6	22	630	2070x1000x1115	845
BC-7.7/40-13	BC2041	1.3	4.0	8.9	7.7	22	630	2070x1000x1115	845
BC-6.7/40-10	BC2041	1.0	3.5	7.8	6.7	22	700	2070x1000x1115	845
BC-8.5/40-13	BC2041	1.3	4.0	9.9	8.5	25	700	2070x1000x1115	850
BC-7.0/30-7	BC2041	0.7	3.0	8.3	7	30	735	2130x1000x1235	900
BC-8.2/35-10	BC2041	1.0	3.5	9.6	8.2	30	630	2130x1000x1235	905
BC-10.4/40-13	BC2041	1.3	4.0	12.2	10.4	30	630	2130x1000x1235	905



KAITEC TWO STAGE AIR COMPRESSOR



KAITEC HIGH PRESSURE AIR COMPRESSOR



KAITEC LOW PRESSURE AIR COMPRESSOR



KAITAIN TWO STAGE AIR COMPRESSOR



HIGH-PRESSURE KB SERIES



LGCY DIESEL ENGINE PORTABLE SCREW AIR COMPRESSOR



WATER INJECTED SINGLE SCREW AIR COMPRESSOR



VACUUM PUMP



OIL FREE SCREW BLOWER



CENTRIFUGAL AIR COMPRESSOR



DTH Drilling Rig



ALL ACCESSORY

