



The Advance  
You've Been  
Looking For

At System Sensor, we realize that your fire system is the final touch before a building is approved for occupancy. With anticipation of an on-time grand opening, building owners are depending on you to install that system quickly and accurately.

From development to introduction, the SpectrAlert® Advance line of notification appliances has been focused on enabling you to meet and exceed your customers' expectations.

Here's how.

We found out what you wanted by conducting interviews with commercial fire system dealers, installers, engineers, and designers. We showed you the prototypes. We asked for your opinions. We added your voice to our research and came up with product features, accessories, and online tools that really make a difference.

Now, the SpectrAlert Advance product line has expanded to include the next generation of speakers, speaker strobes, mini-horns, and amber lens strobes and speaker strobes.

Let's keep this communication going. Together, we can continue to develop products that make specification, installation, maintenance, and inspections a breeze.

**SPECTRAlert®**  
**ADVANCE**  
from System Sensor





Enjoy the effortless installations, time savings, and financial rewards made possible by the features and selection available with the SpectrAlert Advance product line.

- Plug-in design speeds installation and eliminates costly ground faults
- More room in the back box prevents nicked or crushed wires
- Universal mounting plate provides uniform installation for wall- and ceiling-mount units
- Mounting plate shorting spring tests wiring continuity before devices are installed
- Paint covers protect installed mounting plates during construction to increase installation flexibility
- Electrical compatibility with legacy SpectrAlert products simplifies retrofits
- Retrofit plates cover footprints of previously installed devices to increase application flexibility

Horns, strobes, horn strobes, mini-horns, chimes, and chime strobes for indoor and outdoor installations

- Amber lens strobe for non-fire evacuations in mass notification systems
- Mini-horns for applications where smaller notification devices suit the aesthetics
- Horns with field-selectable output options
- Chimes for discreet alarm notification
- Strobes with visible candela settings for quick visual inspections
- Horn strobes and chime strobes for both audible and visible alerts
- Devices designed for minimal intrusion into the back box
- Horns rated at 88+ dBA at 16 volts
- Rotary switch for horn tone and three volume selections
- Devices compatible with MDL sync module



The first and only plug-in speakers and speaker strobes for indoor and outdoor installations

- Plug-in design virtually eliminates costly and time-consuming ground faults
- Protective plastic cover isolates speaker components to prevent ground faults caused by nicked wires
- Amber lens speaker strobe for non-fire evacuations in mass notification systems
- Rotary switch simplifies field selection of speaker voltage and power settings
- SP speakers offer high-fidelity sound output
- SPV speakers offer high-volume sound output
- Lowest current draws at highest candela settings
- Broadest selection of outdoor speakers
- Choice of red or white, wall or ceiling
- Mounts to a 4 × 4 × 2 1/8-inch-deep back box with no extension ring required
- Choice of metal or plastic back boxes
- Plastic weatherproof back boxes
  - Lighter and easier to mount
  - Removable side flanges
  - Screw knockouts in the back
  - Saltwater corrosion resistant

ExitPoint directional sounder with voice messaging

ExitPoint directional sounder with voice messaging uses broadband sound to lead occupants to the nearest, safest exit, improving evacuation times up to 75%



Guaranteed Quality

## Features available across the entire SpectrAlert Advance product line

- Plug-in design
- Electrical compatibility with legacy SpectrAlert products
- Field-selectable candela settings on wall and ceiling units:
  - Standard: 15, 15/75, 30, 75, 95, 110, 115
  - High: 135, 150, 177, 185
- Automatic selection of 12- or 24-volt operation at 15 and 15/75 candela
- Shorting spring on mounting plate to test continuity before device installation
- Universal mounting plate fits both wall- and ceiling-mounted units
- Compatibility with System Sensor synchronization protocol
- Optional tamper-resistant Torx head screw included



FROM  
INTERMEDIATE  
FREQUENCY  
AMPLIFIER



Plug-in design allows pre-wiring and wiring continuity check prior to device installation



2- and 4-wire horn strobes available to meet local code requirements

### Additional features of outdoor products

- Outdoor wall and ceiling products rated from –40°F to 151°F (–40°C to 66°C)
- Outdoor products listed to UL 1638 (strobe) and UL 464 (horn) outdoor requirements
- Outdoor horns, strobes, and horn strobes listed to NEMA 4X
- Outdoor speakers and speaker strobes listed to NEMA 4X
- Weatherproof back box designed to accommodate in-and-out wiring for daisy chaining outdoor devices
- Plastic or metal weatherproof back boxes available
- Plastic weatherproof back box:
  - Provides knock outs to eliminate the need to drill holes on site
  - Features removable side flanges
  - Has improved resistance to saltwater corrosion



Captive mounting screw



Wall and ceiling outdoor products



Outdoor back boxes accommodate 3/4- and 1/2-inch conduit



Same mounting plate for wall and ceiling



Rotary switch for horn tone selection



Field-selectable candela settings up to 185 cd



Horn rated at 88+ dBA at 16 volts

Features



## Horns and Chimes

HR	Horn, Red
HW	Horn, White
CHR	Chime, Red
CHW	Chime, White
HRK	Outdoor Horn, Red
MHR	Mini-Horn, Red
MHW	Mini-Horn, White

### Notes:

1. Add "-P" to model number for plain housing (no "FIRE" marking on cover), e.g., SR-P.
2. Add "-SP" to model number for "FUEGO" marking on cover, e.g., SR-SP.
3. Add "-R" to model number for replacement outdoor unit, ships minus outdoor back box, e.g., SRK-R.

All models ending in "K" include an outdoor back box.

"Standard candela" refers to strobes that include 15, 15/75, 30, 75, 95, 110, and 115 candela settings. "High candela" refers to strobes that include 135, 150, 177, and 185 candela settings.



## Wall Strobes

SR <sup>1,2</sup>	Strobe, Standard Candela, Red
SRH <sup>1</sup>	Strobe, High Candela, Red
SW <sup>1</sup>	Strobe, Standard Candela, White
SWH <sup>1</sup>	Strobe, High Candela, White
SRK <sup>1,3</sup>	Outdoor Strobe, Standard Candela, Red
SRHK <sup>1,3</sup>	Outdoor Strobe, High Candela, Red
SW-ALERT	Strobe, Standard Candela, White, Amber Lens
SWK <sup>1</sup>	Outdoor Strobe, Standard Candela, White
SWHK <sup>1</sup>	Outdoor Strobe, High Candela, White
SW-CLR-ALERT	Strobe, Standard Candela, White, Clear Lens



## Wall Horn Strobes and Chime Strobes

P2R <sup>1,2</sup>	2-Wire Horn Strobe, Standard Candela, Red
P2RH	2-Wire Horn Strobe, High Candela, Red
P2W <sup>1</sup>	2-Wire Horn Strobe, Standard Candela, White
P2WH <sup>1</sup>	2-Wire Horn Strobe, High Candela, White
P4R	4-Wire Horn Strobe, Standard Candela, Red
P4RH	4-Wire Horn Strobe, High Candela, Red
P4WH	4-Wire Horn Strobe, High Candela, White
CHSR	2-Wire Chime Strobe, Standard Candela, Red
CHSW	2-Wire Chime Strobe, Standard Candela, White
P2RK <sup>1,3</sup>	2-Wire Outdoor Horn Strobe, Standard Candela, Red
P2RHK <sup>1,3</sup>	2-Wire Outdoor Horn Strobe, High Candela, Red
P2WK <sup>1</sup>	2-Wire Outdoor Horn Strobe, Standard Candela, White
P2WHK <sup>1</sup>	2-Wire Outdoor Horn Strobe, High Candela, White
P2RHK-120	2-Wire Outdoor Horn Strobe, High Candela Red, 120 V
P4RK	4-Wire Outdoor Horn Strobe, Standard Candela, Red
P4WK	4-Wire Outdoor Horn Strobe, Standard Candela, White





## Ceiling Strobes

SCR	Strobe, Standard Candela, Red
SCRH	Strobe, High Candela, Red
SCW <sup>1</sup>	Strobe, Standard Candela, White
SCWH	Strobe, High Candela, White
SCRK <sup>3</sup>	Outdoor Strobe, Standard Candela, Red
SCRHK <sup>3</sup>	Outdoor Strobe, High Candela, Red
SCWK	Outdoor Strobe, Standard Candela, White
SCWHK	Outdoor Strobe, High Candela, White
SCW-CLR-ALERT	Strobe, Standard Candela, White, Clear Lens



## Ceiling Horn Strobes

PC2R <sup>1</sup>	2-Wire Horn Strobe, Standard Candela, Red
PC2RH	2-Wire Horn Strobe, High Candela, Red
PC2W <sup>1,2</sup>	2-Wire Horn Strobe, Standard Candela, White
PC2WH <sup>1</sup>	2-Wire Horn Strobe, High Candela, White
PC4R	4-Wire Horn Strobe, Standard Candela, Red
PC4RH	4-Wire Horn Strobe, High Candela, Red
PC4W	4-Wire Horn Strobe, Standard Candela, White
PC2RK <sup>3</sup>	2-Wire Outdoor Horn Strobe, Standard Candela, Red
PC2RHK <sup>3</sup>	2-Wire Outdoor Horn Strobe, High Candela, Red
PC2WK	2-Wire Outdoor Horn Strobe, Standard Candela, White
PC2WHK	2-Wire Outdoor Horn Strobe, High Candela, White
PC4WK	4-Wire Outdoor Horn Strobe, Standard Candela, White
PC4WHK	4-Wire Outdoor Horn Strobe, High Candela, White



## Accessories

BBS-2	Wall Back Box Skirt, Red
BBSW-2	Wall Back Box Skirt, White
BBSC-2	Ceiling Back Box Skirt, Red
BBSCW-2	Ceiling Back Box Skirt, White
MP120K	120 VAC Adapter Mounting Plate
LENS-B*	Wall-Mount Lens Attachment, Blue
LENS-R*	Wall-Mount Lens Attachment, Red
LENS-G*	Wall-Mount Lens Attachment, Green
LENS-A*	Wall-Mount Lens Attachment, Amber
LENS-BC*	Ceiling-Mount Lens Attachment, Blue
LENS-RC*	Ceiling-Mount Lens Attachment, Red
LENS-GC*	Ceiling-Mount Lens Attachment, Green
LENS-AC*	Ceiling-Mount Lens Attachment, Amber
TR-HS	Wall-Mount Horn Strobe Trim Ring, Red
TRW-HS	Wall-Mount Horn Strobe Trim Ring, White
TRC-HS	Ceiling-Mount Horn Strobe Trim Ring, Red
TRCW-HS	Ceiling-Mount Horn Strobe Trim Ring, White

\*Color lens attachments may be used with System Sensor non-fire (plain) indoor or outdoor strobe models.





## Wall Speakers

SPR	Speaker, Red
SPRV	Speaker, Red, High dB
SPW	Speaker, White
SPWV	Speaker, White, High dB
SPWK <sup>1</sup>	Outdoor Speaker, White
SPRK <sup>1</sup>	Outdoor Speaker, Red



## Wall Speaker Strobes

SPSW <sup>2</sup>	Speaker Strobe, Standard Candela, White
SPSR <sup>2</sup>	Speaker Strobe, Standard Candela, Red
SPSWH <sup>2</sup>	Speaker Strobe, High Candela, White
SPSRH <sup>2</sup>	Speaker Strobe, High Candela, Red
SPSWV <sup>2</sup>	Speaker Strobe, Standard Candela, High dB, White
SPSRV <sup>2</sup>	Speaker Strobe, Standard Candela, High dB, Red
SPSWK <sup>1,2</sup>	Outdoor Speaker Strobe, Standard Candela, White
SPSRK <sup>1,2</sup>	Outdoor Speaker Strobe, Standard Candela, Red
SPSW-ALERT	Speaker Strobe, Standard Candela, White, Amber Lens



## Ceiling Speakers

SPCW	Speaker, White
SPCR	Speaker, Red
SPCWV	Speaker, High dB, White
SPCRV	Speaker, High dB, Red
SPCWK <sup>1</sup>	Outdoor Speaker, White

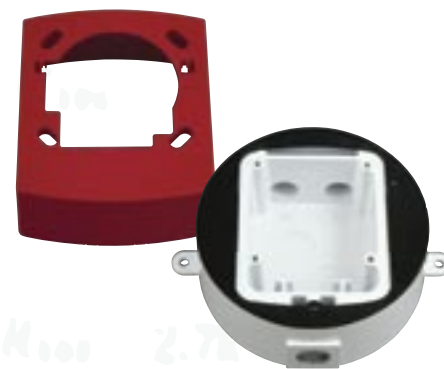
### Notes:

1. Add "-R" to model number for replacement outdoor unit, ships minus outdoor back box, e.g., SPWK-R.

2. Add "-P" to model number for plain housing (no "FIRE" marking on cover), e.g., SPSW-P.

All models ending in "K" include an outdoor back box.

"Standard candela" refers to strobes that include 15, 15/75, 30, 75, 95, 110, and 115 candela settings. "High candela" refers to strobes that include 135, 150, 177, and 185 candela settings.



## Ceiling Speaker Strobes

SPSCW <sup>2</sup>	Speaker Strobe, Standard Candela, White
SPSCR	Speaker Strobe, Standard Candela, Red
SPSCWH <sup>2</sup>	Speaker Strobe, High Candela, White
SPSCRH	Speaker Strobe, High Candela, Red
SPSCWV <sup>2</sup>	Speaker Strobe, Standard Candela, High dB, White
SPSCRV	Speaker Strobe, Standard Candela, High dB, Red
SPSCWVH <sup>2</sup>	Speaker Strobe, High Candela, High dB, White
SPSCRVH	Speaker Strobe, High Candela, High dB, Red
SPSCWK <sup>1</sup>	Outdoor Speaker Strobe, Standard Candela, White
SPSCWHK <sup>1</sup>	Outdoor Speaker Strobe, High Candela, White
SPSCW-CLR-ALERT	Speaker Strobe, Standard Candela, White, Clear Lens

## ExitPoint™ Sounder

PF24V	Directional Sounder with Voice Messaging, White
-------	---

## Accessories

RFPW	Retrofit Plate, White
RFP	Retrofit Plate, Red
SPBBSCW	Ceiling-Mount Back Box Skirt, White
SPBBSC	Ceiling-Mount Back Box Skirt, Red
SPBBSW	Wall-Mount Back Box Skirt, White
SPBBS	Wall-Mount Back Box Skirt, Red
TRW	Wall-Mount Trim Ring, White
TR	Wall-Mount Trim Ring, Red
TRCW	Ceiling-Mount Trim Ring, White
TRC	Ceiling-Mount Trim Ring, Red
MWBBW	Wall, Metal Weatherproof Back Box, White
MWBBS	Wall, Metal Weatherproof Back Box, Red
MWBBCW	Ceiling, Metal Weatherproof Back Box, White

# Specifications

**Standard Operating Temperature**  
32°F to 120°F (0°C to 49°C)

**K Series Operating Temperature**  
-40°F to 151°F (-40°C to 66°C)

**Humidity Range**  
10% to 93% non-condensing (indoor products)

**Strobe Flash Rate**  
1 flash per second

**Nominal Voltage**  
Regulated 12 DC/FWR or regulated 24 DC/FWR<sup>1</sup>

**Operating Voltage Range<sup>2</sup>**  
8 V to 17.5 V (12 V nominal) or 16 V to 33 V (24 V nominal)

**Input Terminal Wire Gauge**  
12 AWG to 18 AWG

**Ceiling-Mount Dimensions (including lens)**  
6.8 in Dia. × 2.5 in H (173 mm Dia. × 64 mm H)

**Wall-Mount Dimensions (including lens)**  
5.6 in L × 4.7 in W × 2.5 in D (142 mm L × 119 mm W × 64 mm D)

**Horn Dimensions**  
5.6 in L × 4.7 in W × 1.3 in D (142 mm L × 119 mm W × 33 mm D)

**Mini-Horn Dimensions**  
4.6 in L × 2.9 in W × .45 in D (117 mm L × 74 mm W × 11.5 mm D)

**Wall Back Box Skirt Dimensions**  
5.1 in L × 6.0 in W × 2.25 in D (130 mm L × 152 mm W × 57 mm D)

**Ceiling Back Box Skirt Dimensions**  
7.1 in Dia. × 2.25 in H (180 mm Dia. × 57 mm H)

**Wall Weatherproof Back Box Dimensions**  
5.7 in L × 5.1 in W × 2.0 in D (145 mm L × 130 mm W × 51 mm D)

**Ceiling Weatherproof Back Box Dimensions**  
7.1 in Dia. × 2.0 in H (180 mm Dia. × 51 mm H)

- Notes:**
1. Full Wave Rectified (FWR) voltage is an unfiltered, time-varying power source that is used on some power supply and panel outputs.
  2. P, S, PC, and SC products will operate at 12 V nominal only for 15 and 15/75 cd.
  3. To calculate current draw for 4-wire horn/strobes, combine horn and strobe current draws from the tables at right.

## UL Max. Strobe Current Draw (mA RMS)

	Candela	8–17.5 Volts		16–33 Volts	
		DC	FWR	DC	FWR
Standard Candela Range	15	123	128	66	71
	15/75	142	148	77	81
	30	NA	NA	94	96
	75	NA	NA	158	153
	95	NA	NA	181	176
	110	NA	NA	202	195
High Candela Range	115	NA	NA	210	205
	135	NA	NA	228	207
	150	NA	NA	246	220
	177	NA	NA	281	251
	185	NA	NA	286	258

## UL Max. Horn Current Draw (mA RMS)

Sound Pattern	dB	8–17.5 Volts		16–33 Volts	
		DC	FWR	DC	FWR
Temporal	High	57	55	69	75
Temporal	Medium	44	49	58	69
Temporal	Low	38	44	44	48
Non-Temporal	High	57	56	69	75
Non-Temporal	Medium	42	50	60	69
Non-Temporal	Low	41	44	50	50
Coded	High	57	55	69	75
Coded	Medium	44	51	56	69
Coded	Low	40	46	52	50

## UL Max. Mini-Horn Current Draw (mA RMS)

Sound Pattern	Volume	8–17.5 Volts		16–33 Volts	
		DC	FWR	DC	FWR
Temporal	High	12	10	17	15
Temporal	Low	10	9	14	13
Non-Temporal	High	22	17	29	25
Non-Temporal	Low	17	13	21	19

## Candela Measurements, Amber Lens Strobe

	Candela	On-Axis Rating (UL 1638)	Equivalent Rating for UL 1971 Profile*
Standard Candela Range	15	15	12
	15/75	15/75	15/75
	30	30	24
	75	75	60
	95	95	75
	110	110	85
High Candela Range	115	115	90
	135	135	110
	150	150	120
	177	177	140
	185	185	150

\*UL1971 is not applicable to mass notification devices. These readings were obtained using the measurement procedure specified under UL 1971.

## Mini-Horn Output (dBA)

Pattern	Output Level	8–17.5 VDC	8–17.5 VFWR	Nominal 12 VDC	Nominal 12 VFWR	16–33 VDC	16–33 VFWR
Temporal	High	68	67	71	70	78	76
Temporal	Low	66	65	69	68	76	75
Continuous	High	72	71	75	74	80	79
Continuous	Low	70	69	73	72	78	77

## Indoor Speaker Sound Output

UL Reverberant (dBA @ 10 ft.)	2 W	1 W	½ W	¼ W
Wall-Mount SP Series	86	84	81	78
Wall-Mount SPV Series	90	88	85	81
Ceiling-Mount SPC Series	86	83	80	77
Ceiling-Mount SPCV Series	90	88	85	81

## Outdoor Speaker Sound Output

UL Reverberant (dBA @ 10 ft.)	2 W	1 W	½ W	¼ W
Wall-Mount Series	90	88	85	81
Ceiling-Mount Series	90	88	85	81

## Rotary Horn and Horn Strobe Switch Settings

Setting	Repetition Rate	dB Level
1	Temporal Horn	High
2	Temporal Horn	Medium
3	Temporal Horn	Low
4	Normal Horn	High
5	Normal Horn	Medium
6	Normal Horn	Low
7*	Externally Coded	High
8*	Externally Coded	Medium
9*	Externally Coded	Low

\*Horn & 4-wire Horn Strobe only.

## UL Max. Current Draw (mA RMS), 2-Wire Horn Strobe, Standard Candela Range (15–115 cd)

DC Input	8–17.5 Volts		16–33 Volts						
	15	15/75	15	15/75	30	75	95	110	115
Temporal High	137	147	79	90	107	176	194	212	218
Temporal Medium	132	144	69	80	97	157	182	201	210
Temporal Low	132	143	66	77	93	154	179	198	207
Non-Temporal High	141	152	91	100	116	176	201	221	229
Non-Temporal Medium	133	145	75	85	102	163	187	207	216
Non-Temporal Low	131	144	68	79	96	156	182	201	210
FWR Input									
Temporal High	136	155	88	97	112	168	190	210	218
Temporal Medium	129	152	78	88	103	160	184	202	206
Temporal Low	129	151	76	86	101	160	184	194	201
Non-Temporal High	142	161	103	112	126	181	203	221	229
Non-Temporal Medium	134	155	85	95	110	166	189	208	216
Non-Temporal Low	132	154	80	90	105	161	184	202	211

## ExitPoint Current Draw Measurements and Sound Output Guide

Speed Selection			Maximum DC Operating Current (mA RMS) (16 to 33 V)	Audibility (dBA) (16 to 33 V) Note 1	Audibility (dBA) (16 to 33 V) Note 2
Speed	DIP Switch Selection	Power Setting			
Fast (Exit)	10	High	185	84	75
Fast (Exit)	10	Med-High	131	81	72
Fast (Exit)	10	Med	78	78	69
Fast (Exit)	10	Med-Low	76	75	66
Fast (Exit)	10	Low	64	72	63
Med-Fast	9	High	170	83	74
Med-Fast	9	Med-High	124	80	71
Med-Fast	9	Med	75	77	68
Med-Fast	9	Med-Low	73	74	65
Med-Fast	9	Low	62	71	62
Med-Slow	8	High	135	82	73
Med-Slow	8	Med-High	104	79	70
Med-Slow	8	Med	67	76	67
Med-Slow	8	Med-Low	65	73	64
Med-Slow	8	Low	57	70	61
Slow	7	High	120	82	72
Slow	7	Med-High	92	79	69
Slow	7	Med	62	76	66
Slow	7	Med-Low	61	73	63
Slow	7	Low	54	70	60

Note 1: Sound output measured in anechoic room at 10 feet.

Note 2: Sound output measured in a reverberant room at 10 feet.

## UL Max. Current Draw (mA RMS), 2-Wire Horn Strobe, High Candela Range (135–185 cd)

DC Input	16–33 Volts				FWR Input	16–33 Volts			
	135	150	177	185		135	150	177	185
Temporal High	245	259	290	297	Temporal High	215	231	258	265
Temporal Medium	235	253	288	297	Temporal Medium	209	224	250	258
Temporal Low	232	251	282	292	Temporal Low	207	221	248	256
Non-Temporal High	255	270	303	309	Non-Temporal High	233	248	275	281
Non-Temporal Medium	242	259	293	299	Non-Temporal Medium	219	232	262	267
Non-Temporal Low	238	254	291	295	Non-Temporal Low	214	229	256	262

## Horn Output (dBA) in UL Reverberant Room

Switch Position	Sound Pattern	dB	8–17.5 Volts**		16–33 Volts**		24 Volt Nominal Measurements			
			DC	FWR	DC	FWR	Reverberant		Anechoic	
							DC	FWR	DC	FWR
1	Temporal	High	78	78	84	84	88	88	99	98
2	Temporal	Medium	74	74	80	80	86	86	96	96
3	Temporal	Low	71	73	76	76	83	80	94	89
4	Non-Temporal	High	82	82	88	88	93	92	100	100
5	Non-Temporal	Medium	78	78	85	85	90	90	98	98
6	Non-Temporal	Low	75	75	81	81	88	84	96	92
7*	Coded	High	82	82	88	88	93	92	101	101
8*	Coded	Medium	78	78	85	85	90	90	97	98
9*	Coded	Low	75	75	81	81	88	85	96	92

\*Horn & 4-wire Horn Strobe only.

\*\*Minimum dB rating for Operational Voltage Range per UL 464.

Turn to page 12 for mounting options ➡



# SpectrAlert Advance Mounting Options

SpectrAlert Advance products mount to a wide range of electrical boxes for indoor and outdoor use. Accessories are also available for new and retrofit installations. The chart below provides guidance on compatibility between commonly used electrical boxes and SpectrAlert Advance devices, as well as optional mounting accessories. For an interactive online version of this tool, please visit [systemsensor.com/mount](http://systemsensor.com/mount).

Shaded boxes represent accessories and products that are compatible with one another. Shaded boxes with one dot indicate accessories and products that are compatible with the use of a trim ring. Shaded boxes with two dots indicate accessories and products that are compatible with the use of a weatherproof back box.

	Indoor Products										Outdoor Products																
	Wall Mount										Ceiling Mount					Wall Mount							Ceiling Mount				
	2-Wire Chime	2-Wire Chime-Strobe	2-Wire Horn	2-Wire Mini Horn	2-Wire Strobe	2-Wire Horn Strobe	4-Wire Horn Strobe	Speaker	Speaker Strobe	2-Wire Strobe	2-Wire Horn Strobe	4-Wire Horn Strobe	Speaker	Speaker Strobe	2-Wire Horn Strobe	2-Wire Horn	2-Wire Strobe	4-Wire Horn Strobe	120 V Horn Strobe	Speaker	Speaker Strobe	2-Wire Strobes	2-Wire Horn Strobe	4-Wire Horn Strobe	Speaker	Speaker Strobe	
Standard Mounting Boxes							•					•															
2" × 4" × 1½" Deep Handy Box							•					•															
2" × 4" × 2½" Deep Handy Box																											
3" × 2" Single-Gang Switch Box 1½" Deep							•					•															
3" × 2" Single-Gang Switch Box 2½" Deep																											
Double-Gang Switch Box 2½" Deep																											
4" × 4" × 1½" Deep				•••																							
4" × 4" × 2½" Deep																											
4" Octagon, 1½" Deep				•••																							
Single-Gang Mud Ring on 4" × 4"							•					•															
Double-Gang Mud Ring on 4" × 4"																											
1900 Outdoor Box, Single															••	••	••	••	••	••	••	••	••	••	••	••	
System Sensor Accessories																											
Back Box Skirt																											
Trim Ring																											
Plastic Weatherproof Back Box																											
Metal Weatherproof Back Box																											
Retrofit Plate																											
<div>• = with Trim Ring</div> <div>•• = with WBB Weatherproof Back Box</div> <div>••• = with Single Gang Mud Ring</div>																											

- = with Trim Ring
- = with WBB Weatherproof Back Box
- = with Single Gang Mud Ring

## The Power Behind The Products

System Sensor was founded in 1984 and today is the largest manufacturer of fire detection and notification appliances in the world.

More than 1,900 System Sensor associates collaborate worldwide to build quality products for conventional detection, intelligent detection, audible and visible (AV) notification, heating, ventilation, air conditioning (HVAC) monitoring, and sprinkler systems monitoring. We attribute the demand for our products to our high production standards and strong communication with our customers. Every day we aim to develop advanced ideas that deliver advanced solutions for our customers.

For more information, please call 800-SENSOR2 for a free E•DOCS CD-ROM, a comprehensive resource of technical information, or visit our Web site at [systemsensor.com](http://systemsensor.com).

You will find updated agency listing information at [systemsensor.com](http://systemsensor.com).



advanced ideas. advanced solutions.™

8 0 0 / 7 3 6 - 7 6 7 2  
[www.systemsensor.com](http://www.systemsensor.com)