

HEAVY DUTY CHAIN 54

“C” TYPE CHAIN 61

BI X CONVEYOR CHAIN 62

SIDE BOW CHAIN 63

SNAP-ON TOP CHAIN 64

SPECIAL CHAINS

SELF-LUBRICATING CHAIN 65

HOLLOW PIN CHAIN 66

ROLLERLESS CHAIN 67

NICKEL-PLATED CHAIN 67

STAINLESS STEEL CHAIN 68

PRECIPITATION HARDENED STAINLESS STEEL CHAIN 69

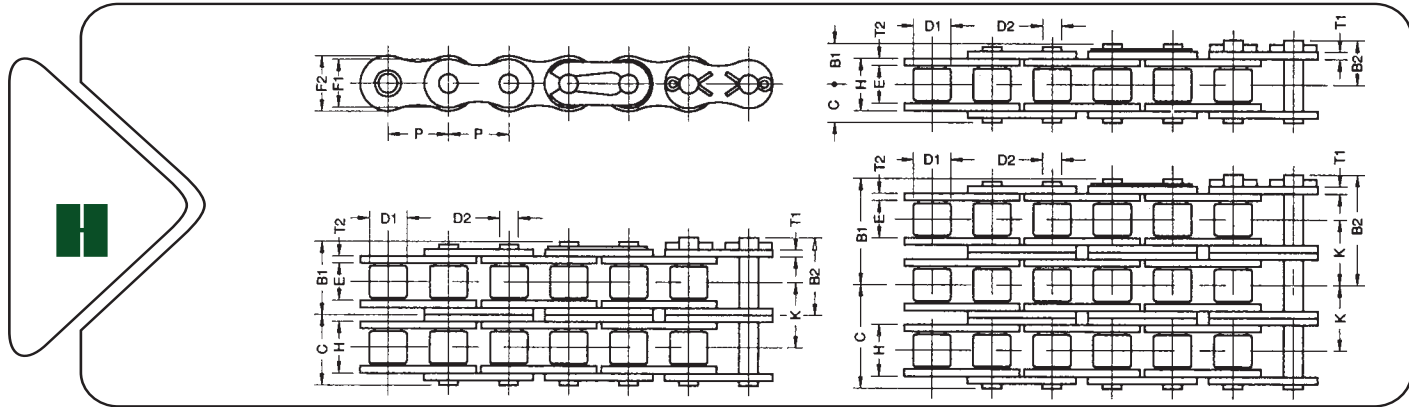
BICYCLE & MOTORCYCLE CHAIN 70

MOTORCYCLE X-RING CHAIN 71

O-RING CHAIN 72



HEAVY DUTY CHAINS



SINGLE STRAND

ANSI Chain No.	Pitch x Width		Roller	Pin				Links					Avg. Ulti. Tensile Strength	Approx. Weight	
	P	x E		D1	C	B1	B2	D2	T1	T2	H	F1			F2
	inch	mm	mm	mm	mm	mm	mm	mm	mm	mm	mm	mm	mm	kgf	kg/m
25H	1/4 x 1/8	6.35 x 3.18	3.30	28.57	5.34	—	2.32	1.02	1.02	5.35	5.01	5.81	530	0.16	
50H	5/8 x 3/8	15.875 x 9.52	10.16	4.43	12.05	13.35	5.09	2.38	2.38	14.65	13.01	15.08	3600	1.14	
60H	3/4 x 1/2	19.05 x 12.70	11.91	11.05	15.35	16.90	5.96	3.18	3.18	19.43	15.64	18.09	5500	1.73	
80H	1 x 5/8	25.4 x 15.88	15.87	14.40	20.15	22.55	7.94	3.99	3.99	24.28	20.82	24.13	9000	2.97	
100H	1 1/4 x 3/4	31.75 x 19.05	19.05	18.15	—	34.91	9.54	4.80	4.80	29.10	26.03	30.16	14000	4.49	
120H	1 1/2 x 1	38.10 x 25.40	22.22	21.59	—	29.68	11.11	5.57	5.57	37.18	31.24	36.19	16500	6.26	
140H	1 3/4 x 1	44.45 x 25.40	25.40	27.23	—	34.17	12.71	6.35	6.35	38.90	36.44	42.22	26800	8.15	
160H	2 x 1 1/4	50.80 x 31.75	28.57	29.07	—	39.26	14.29	6.90	6.90	46.48	41.65	48.26	30850	10.30	
180H	2 1/4 x 1 13/32	57.15 x 35.71	35.71	38.64	—	44.14	17.46	7.92	7.92	52.00	46.10	53.50	44120	13.70	
200H	2 1/2 x 1 1/2	63.50 x 38.10	39.67	43.55	—	49.12	19.85	9.53	9.53	58.29	52.07	60.32	51600	19.30	
60H CP	3/4 x 1/2	19.05 x 12.70	11.91	14.40	—	16.90	5.96	3.18	3.18	19.43	15.64	18.09	5500	1.75	
80H CP	1 x 5/8	25.4 x 15.88	15.87	18.15	—	22.55	7.94	3.99	3.99	24.28	20.82	24.13	9000	3.00	
100H CP	1 1/4 x 3/4	31.75 x 19.05	19.05	21.59	—	34.91	9.54	4.80	4.80	29.10	26.03	30.16	14000	4.54	
120H CP	1 1/2 x 1	38.10 x 25.40	22.22	27.23	—	29.68	11.11	5.57	5.57	37.18	31.24	36.19	16500	6.33	
140H CP	1 3/4 x 1	44.45 x 25.40	25.40	29.07	—	34.17	12.71	6.35	6.35	38.90	36.44	42.22	26800	8.25	
160H CP	2 x 1 1/4	50.80 x 31.75	28.57	34.01	—	39.26	14.29	6.90	6.90	46.48	41.65	48.26	30850	10.40	
180H CP	2 1/4 x 1 13/32	57.15 x 35.71	35.71	38.64	—	44.14	17.46	7.92	7.92	52.50	46.86	54.29	44120	13.80	
200H CP	2 1/2 x 1 1/2	63.50 x 38.10	39.67	43.55	—	49.12	19.85	9.53	9.53	58.29	52.07	60.32	51600	19.30	

NOTE: For Chain No.25H, D-1 = Bushing Diameter

ISO Chain No.	Pitch x Width		Roller	Pin				Links					Avg. Ulti. Tensile Strength	Approx. Weight	
	P	x E		D1	C	B1	B2	D2	T1	T2	H	F1			F2
	inch	mm	mm	mm	mm	mm	mm	mm	mm	mm	mm	mm	mm	kgf	kg/m
12BH	3/4 x 7/16	19.05 x 11.68	12.07	12.57	14.86	—	6.10	2.5	2.5	16.96	16.10	17.40	4480	1.43	

NOTE :12BH Made With Case Hardened Pins.

DOUBLE STRAND

ANSI Chain No.	Pitch x Width		Roller	Pin				Links					Transverse Pitch	Avg. Ulti. Tensile Strength	Approx. Weight
	P	x E		D1	C	B1	B2	D2	T1	T2	H	F1			
	inch	mm	mm	mm	mm	mm	mm	mm	mm	mm	mm	mm	mm	kgf	kg/m
60H-2	3/4 x 1/2	19.05 x 12.70	11.91	27.55	28.05	29.75	5.96	3.18	3.18	19.43	15.64	18.09	26.11	11000	3.43
80H-2	1 x 5/8	25.4 x 15.88	15.87	34.75	36.25	38.65	7.94	3.99	3.99	24.28	20.82	24.13	32.59	18000	5.91
100H-2	1 1/4 x 3/4	31.75 x 19.05	19.05	41.54	—	44.73	9.54	4.80	4.80	29.10	26.03	30.16	39.09	28000	8.88
120H-2	1 1/2 x 1	38.10 x 25.40	22.22	51.90	—	56.83	11.11	5.57	5.57	37.18	31.24	36.19	48.87	36600	12.50
140H-2	1 3/4 x 1	44.45 x 25.40	25.40	51.69	—	63.64	13.11	6.35	6.35	38.90	36.44	42.22	52.20	53600	16.20
160H-2	2 x 1 1/4	50.80 x 31.75	28.57	64.96	—	70.21	15.11	6.90	6.90	46.48	41.65	48.26	61.90	61760	20.40
60H-2 CP	3/4 x 1/2	19.05 x 12.70	11.91	27.54	—	30.34	5.96	3.18	3.18	19.43	15.64	18.09	26.11	11000	3.49
80H-2 CP	1 x 5/8	25.4 x 15.88	15.87	34.58	—	38.48	7.94	3.99	3.99	24.28	20.82	24.13	32.59	18000	5.95
100H-2 CP	1 1/4 x 3/4	31.75 x 19.05	19.05	41.30	—	44.68	9.54	4.80	4.80	29.10	26.03	30.16	39.09	28000	8.94
120H-2 CP	1 1/2 x 1	38.10 x 25.40	22.22	51.65	—	56.55	11.11	5.57	5.57	37.18	31.24	36.19	48.87	36600	12.57
180H-2 CP	2 1/4 x 1 13/32	57.15 x 35.71	35.71	73.20	—	78.72	17.46	7.92	7.92	52.50	46.86	54.29	69.16	88240	27.40
200H-2 CP	2 1/2 x 1 1/2	63.50 x 38.10	39.67	82.70	—	88.28	19.85	9.53	9.53	58.29	52.07	60.32	78.31	103200	38.00

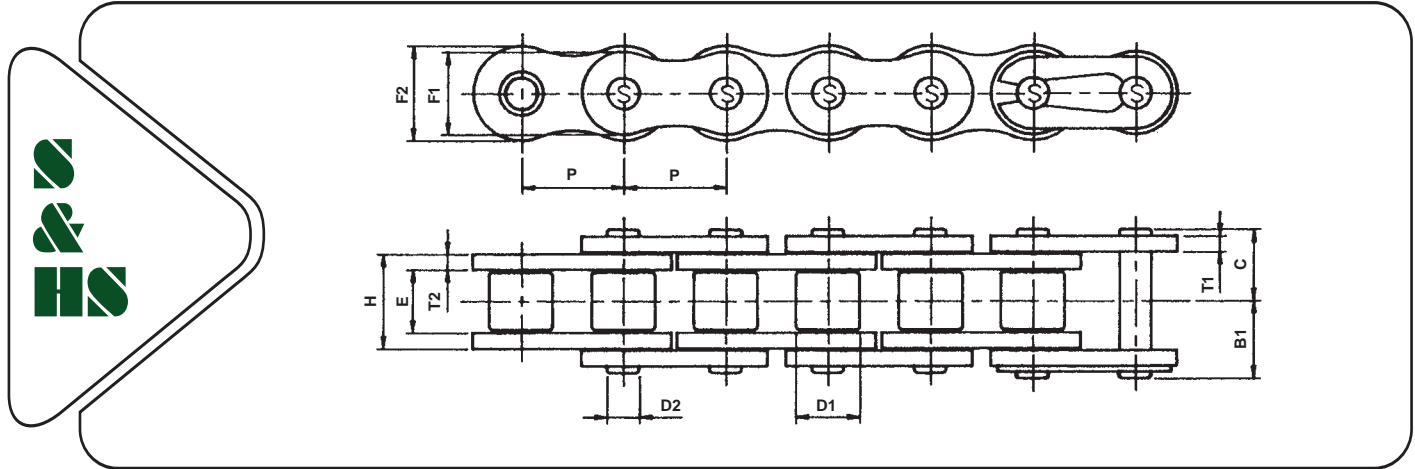
TRIPLE STRAND

ANSI Chain No.	Pitch x Width		Roller	Pin				Links					Transverse Pitch	Avg. Ulti. Tensile Strength	Approx. Weight
	P	x E		D1	C	B1	B2	D2	T1	T2	H	F1			
	inch	mm	mm	mm	mm	mm	mm	mm	mm	mm	mm	mm	mm	kgf	kg/m
60H-3	3/4 x 1/2	19.05 x 12.70	11.91	40.74	42.14	43.54	5.96	3.18	3.18	19.43	15.64	18.09	26.11	16500	5.11
80H-3	1 x 5/8	25.4 x 15.88	15.87	51.05	52.55	54.95	7.94	3.99	3.99	24.28	20.82	24.13	32.59	27000	8.78
60H-3 CP	3/4 x 1/2	19.05 x 12.70	11.91	40.74	42.14	43.54	5.96	3.18	3.18	19.43	15.64	18.09	26.11	16500	5.12
80H-3 CP	1 x 5/8	25.4 x 15.88	15.87	51.05	52.55	54.95	7.94	3.99	3.99	24.28	20.82	24.13	32.59	27000	8.79

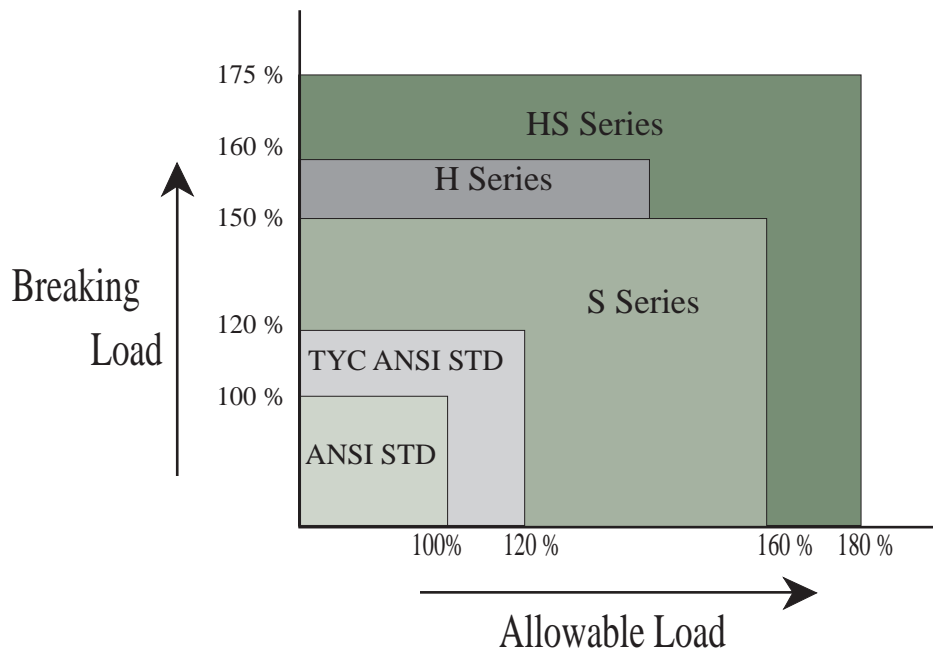
NOTE : "H" Series Made With Through Harden Pins – Except 25H and 12BH



HEAVY DUTY CHAINS



ANSI Chain No.	Pitch x Width		Roller	Pin			Links					Avg. Ulti. Tensile Strength kgf	Approx. Weight kg/m	
	P x E			D1	C	B1	D2	T1	T2	H	F1			F2
	inch	mm		mm	mm	mm	mm	mm	mm	mm	mm			mm
50 S	5/8 x 3/8	15.875 x 9.52	10.16	10.25	12.30	5.09	2.01	2.01	13.84	13.01	15.09	3570	1.01	
60 S	3/4 x 1/2	19.05 x 12.70	11.91	12.72	15.27	5.96	2.38	2.38	17.75	15.64	18.11	5120	1.45	
60 HS	3/4 x 1/2	19.05 x 12.70	11.91	14.40	16.85	5.96	3.18	3.18	19.43	15.64	18.11	6015	1.76	
80 S	1 x 5/8	25.4 x 15.88	15.87	16.50	18.50	7.94	3.18	3.18	22.60	20.82	24.13	9000	2.55	
80 HS	1 x 5/8	25.4 x 15.88	15.87	18.15	20.15	7.94	3.99	3.99	24.28	20.82	24.13	10490	2.97	

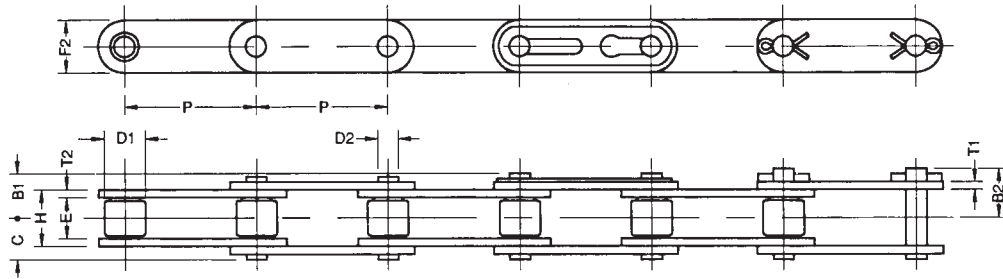


These chains are made according to ASME/ANSI B29.24M specifications that are dimensionally interchangeable with equivalent pitch ANSI B29.1 Power Transmission Roller Chains but with higher tensile and fatigue strength properties. Selected steels and/or specially treated chain parts are used to distinguish them for necessary strength on tough working conditions.



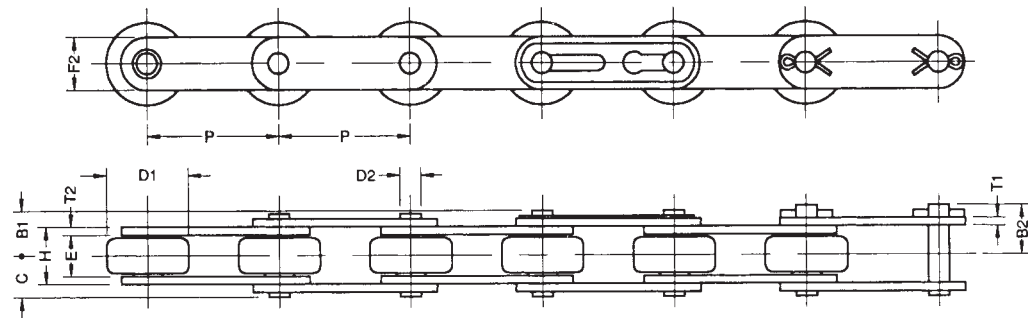
DOUBLE-PITCH HEAVY DUTY CHAINS

STD ROLLERS



ANSI Chain No.	Pitch x Width		Roller	Pin				Links				Avg. Ulti. Tensile Strength kgf	Approx. Weight kg/m	
	P x E			D1	C	B1	B2	D2	T1	T2	H			F2
	inch	mm												
C2060H	1 1/2 x 1/2	38.1x 12.70	11.91	14.40	15.35	16.90	5.96	3.18	3.18	19.43	18.09	5500	1.41	
C2080H	2 x 5/8	50.8x 15.88	15.87	18.15	20.15	22.55	7.94	3.99	3.99	24.28	24.13	9000	2.38	
C2100H	2 1/2 x 3/4	63.5x 19.05	19.05	21.59	-	25.59	9.54	4.80	4.80	29.10	30.16	14000	3.66	
C2120H	3 x 1	76.2x 25.40	22.22	27.23	-	29.68	11.11	5.57	5.57	37.18	36.19	16500	5.18	
C2160H	4 x 1 1/4	101.6x 31.75	28.57	34.01	-	39.26	14.29	7.15	7.15	46.88	48.26	31500	8.55	
C2060H CP	1 1/2 x 1/2	38.1x 12.70	11.91	14.40	-	16.90	5.96	3.18	3.18	19.43	18.09	5500	1.43	
C2080H CP	2 x 5/8	50.8x 15.80	15.87	18.15	-	22.55	7.94	3.99	3.99	24.28	24.13	9000	2.40	
C2100H CP	2 1/2 x 3/4	63.5x 19.05	19.05	21.59	-	25.59	9.54	4.80	4.80	29.10	30.16	14000	3.69	
C2120H CP	3 x 1	76.2x 25.40	22.22	27.23	-	29.68	11.11	5.57	5.57	37.18	36.19	16500	5.21	
C2160H CP	4 x 1 1/4	101.6x 31.75	28.57	34.01	-	39.26	14.29	7.15	7.15	46.88	48.26	31500	8.58	

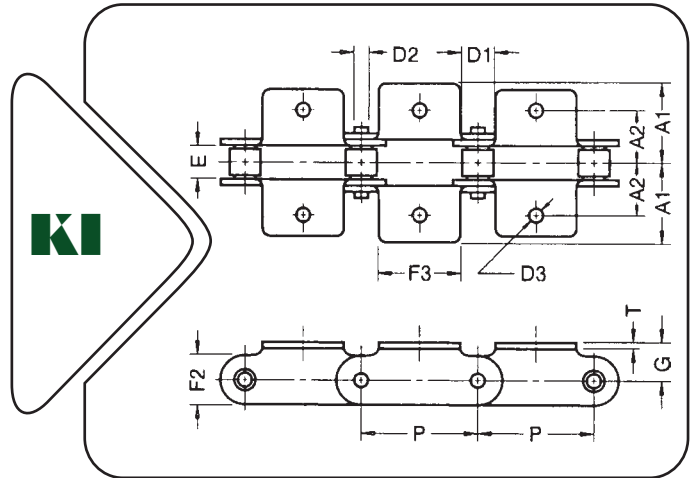
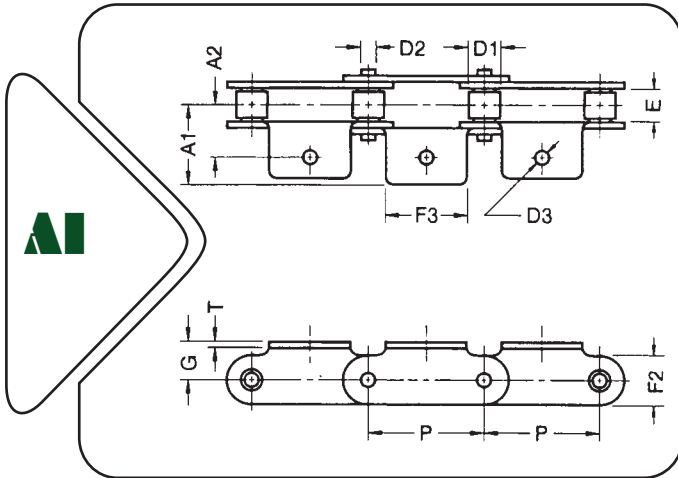
LARGE ROLLERS



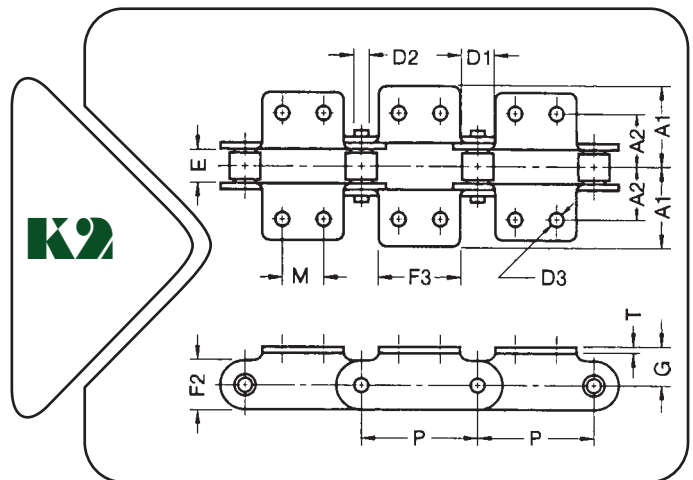
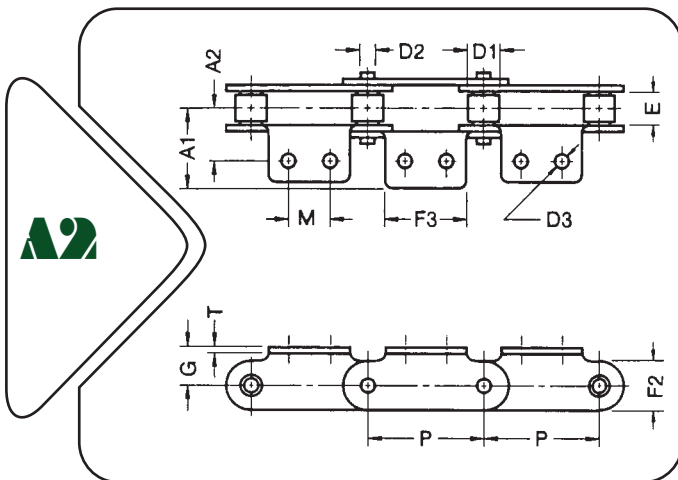
ANSI Chain No.	Pitch x Width		Roller	Pin				Links				Avg. Ulti. Tensile Strength kgf	Approx. Weight kg/m	
	P x E			D1	C	B1	B2	D2	T1	T2	H			F2
	inch	mm												
C2062H	1 1/2 x 1/2	38.1x 12.70	22.22	14.40	15.35	16.90	5.96	3.18	3.18	19.43	18.09	5500	2.12	
C2082H	2 x 5/8	50.8x 15.88	28.58	18.15	20.15	22.55	7.94	3.99	3.99	24.28	24.13	9000	3.44	
C2102H	2 1/2 x 3/4	63.5x 19.05	39.67	21.59	-	25.59	9.54	4.80	4.80	29.10	30.16	14000	5.88	
C2122H	3 x 1	76.2x 25.40	44.45	27.23	-	29.68	11.11	5.57	5.57	37.18	36.19	16500	8.09	
C2162H	4 x 1 1/4	101.6x 31.75	57.15	34.01	-	39.26	14.29	7.15	7.15	46.88	48.26	31500	13.08	
C2062H CP	1 1/2 x 1/2	38.1x 12.70	22.22	14.40	-	16.90	5.96	3.18	3.18	19.43	18.09	5500	2.13	
C2082H CP	2 x 5/8	50.8x 15.88	28.58	18.15	-	22.55	7.94	3.99	3.99	24.28	24.13	9000	3.46	
C2102H CP	2 1/2 x 3/4	63.5x 19.05	39.67	21.59	-	25.59	9.54	4.80	4.80	29.10	30.16	14000	5.90	
C2122H CP	3 x 1	76.2x 25.40	44.45	27.23	-	29.68	11.11	5.57	5.57	37.18	36.19	16500	8.13	
C2162H CP	4 x 1 1/4	101.6x 31.75	57.15	34.01	-	39.26	14.29	7.15	7.15	46.88	48.26	31500	13.12	



DOUBLE-PITCH CHAIN ATTACHMENT



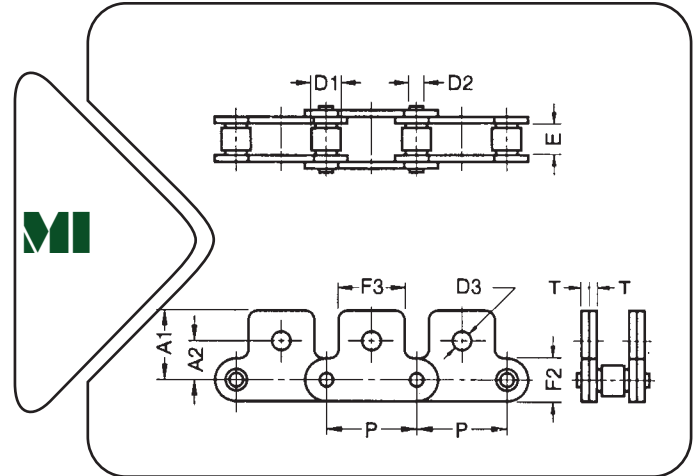
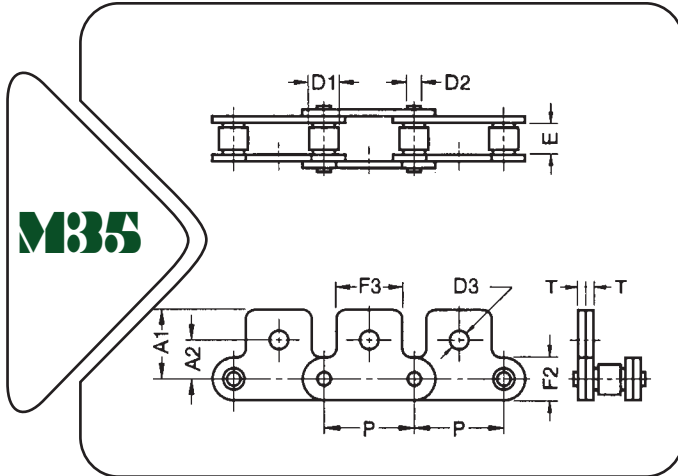
ANSI Chain No.	Pitch x Width		Roller	Pin	Links		Attachment					Avg. Ulti. Tensile Strength kgf
	P	E			T	F2	A1	A2	F3	D3	G	
	inch	mm	mm	mm	mm	mm	mm	mm	mm	mm	mm	
C2060H	1 1/2 x 1/2	38.1 x 12.70	11.91	5.96	3.18	18.09	30.56	21.44	28.58	5.16	14.68	5500
C2080H	2 x 5/8	50.8 x 15.88	15.87	7.94	3.99	24.13	38.50	27.79	38.10	6.75	19.05	9000
C2100H	2 1/2 x 3/4	63.5 x 19.05	19.05	9.54	4.80	30.16	49.91	33.32	47.62	8.33	23.42	14000
C2120H	3 x 1	76.2 x 25.40	22.22	11.11	5.57	36.19	60.71	39.67	57.15	9.92	27.79	16500
C2160H	4 x 1 1/4	101.6 x 31.75	28.57	14.29	7.15	48.26	80.19	52.37	75.30	13.24	36.53	31500



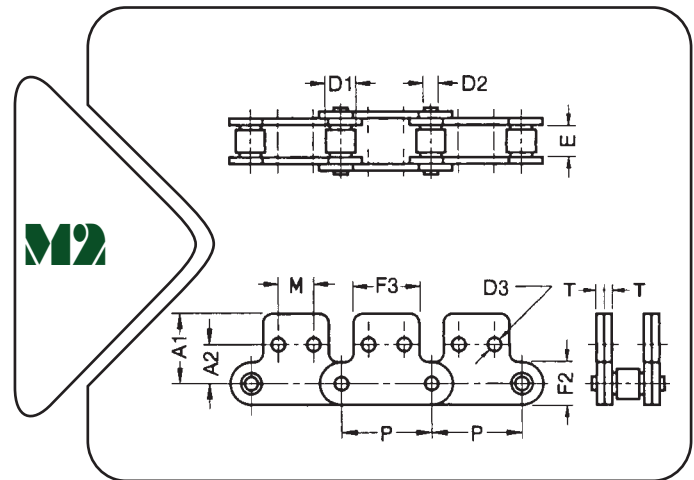
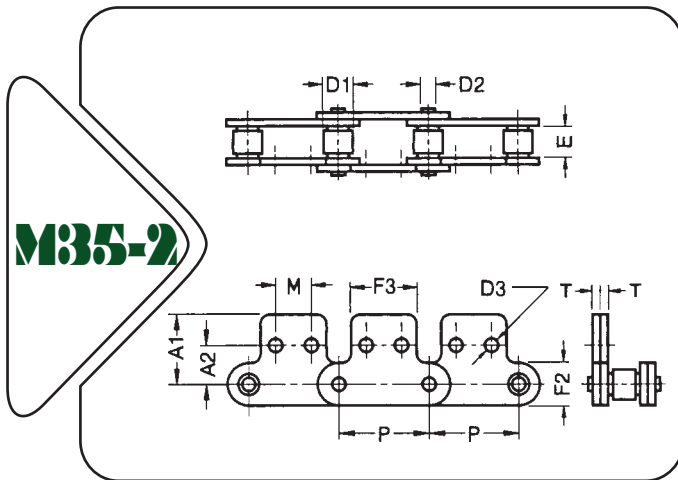
ANSI Chain No.	Pitch x Width		Roller	Pin	Links		Attachment						Avg. Ulti. Tensile Strength kgf
	P	E			T	F2	A1	A2	F3	D3	G	M	
	inch	mm	mm	mm	mm	mm	mm	mm	mm	mm	mm		
C2060H	1 1/2 x 1/2	38.1 x 12.70	11.91	5.96	3.18	18.09	30.56	21.44	28.58	5.16	14.68	14.27	5500
C2080H	2 x 5/8	50.8 x 15.88	15.87	7.94	3.99	24.13	38.50	27.79	38.10	6.75	19.05	19.05	9000
C2100H	2 1/2 x 3/4	63.5 x 19.05	19.05	9.54	4.80	30.16	49.91	33.32	47.62	8.33	23.42	23.83	14000
C2120H	3 x 1	76.2 x 25.40	22.22	11.11	5.57	36.19	60.71	39.67	57.15	9.92	27.79	28.58	16500
C2160H	4 x 1 1/4	101.6 x 31.75	28.57	14.29	7.15	48.26	80.19	52.37	75.30	13.24	36.53	38.10	31500



DOUBLE-PITCH CHAIN ATTACHMENT



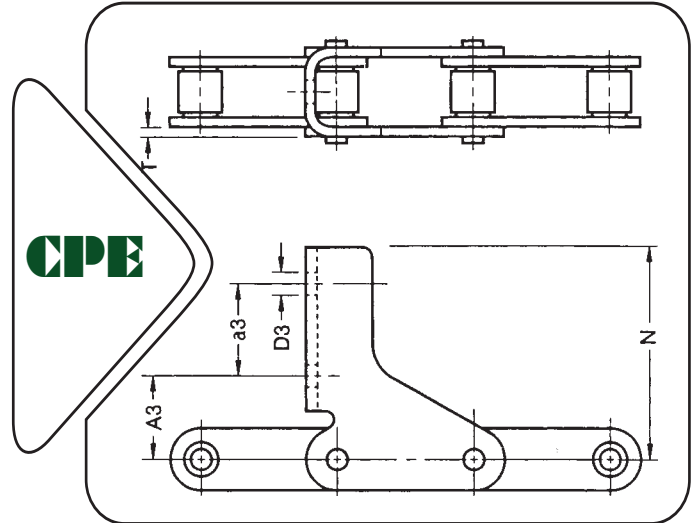
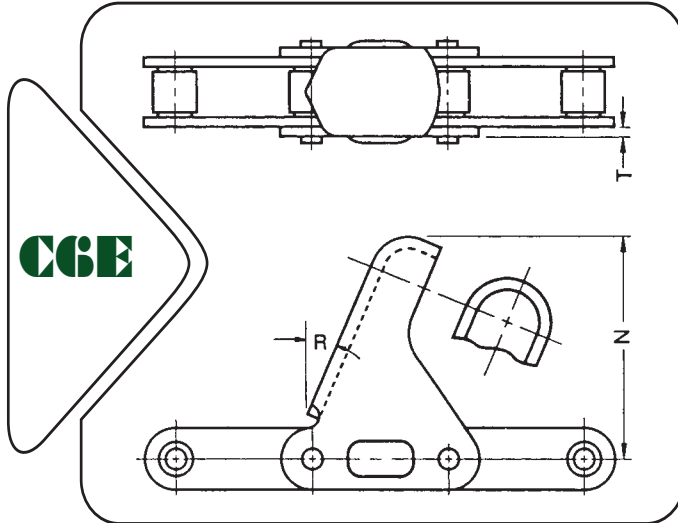
ANSI Chain No.	Pitch x Width		Roller D1 mm	Pin D2 mm	Links		Attachment				Avg. Ulti. Tensile Strength kgf
	P	E			T	F2	A1	A2	F3	D3	
	inch	mm			mm	mm	mm	mm	mm	mm	
C2060H	1½ x 1/2	38.1 x 12.70	11.91	5.96	3.18	18.09	29.77	17.48	28.58	8.33	5500
C2080H	2 x 5/8	50.8 x 15.88	15.87	7.94	3.99	24.13	38.10	22.22	38.10	9.92	9000
C2100H	2½ x 3/4	63.5 x 19.05	19.05	9.54	4.80	30.16	50.40	28.58	47.62	13.10	14000
C2120H	3 x 1	76.2 x 25.40	22.22	11.11	5.57	36.19	59.93	33.32	57.15	14.68	16500
C2160H	4 x 1¼	101.6 x 31.75	28.57	14.29	7.15	48.26	76.83	44.45	75.30	19.46	31500



ANSI Chain No.	Pitch x Width		Roller D1 mm	Pin D2 mm	Links		Attachment					Avg. Ulti. Tensile Strength kgf
	P	E			T	F2	A1	A2	F3	D3	M	
	inch	mm			mm	mm	mm	mm	mm	mm	mm	
C2060H	1½ x 1/2	38.1 x 12.70	11.91	5.96	3.18	18.09	29.77	19.05	28.58	5.16	14.27	5500
C2080H	2 x 5/8	50.8 x 15.88	15.87	7.94	3.99	24.13	38.10	25.40	38.10	6.75	19.05	9000
C2100H	2½ x 3/4	63.5 x 19.05	19.05	9.54	4.80	30.16	50.40	31.75	47.62	8.33	23.82	14000
C2120H	3 x 1	76.2 x 25.40	22.22	11.11	5.57	36.19	59.93	37.31	55.15	9.92	28.58	16500
C2160H	4 x 1¼	101.6 x 31.75	28.57	14.29	7.15	48.26	76.83	50.80	75.30	13.24	38.10	31500

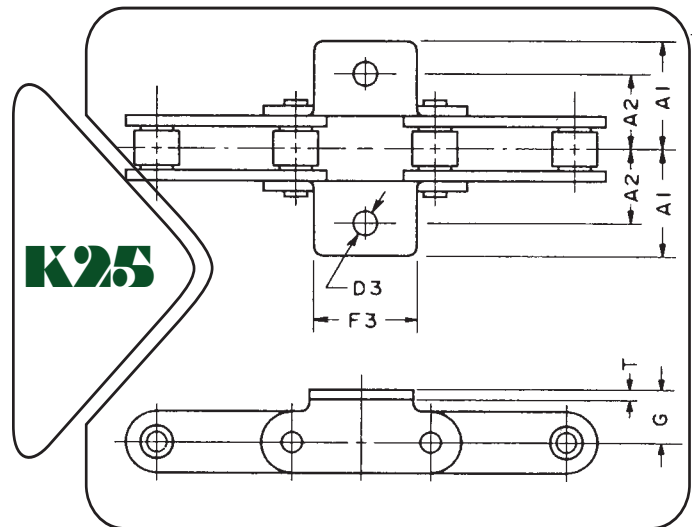
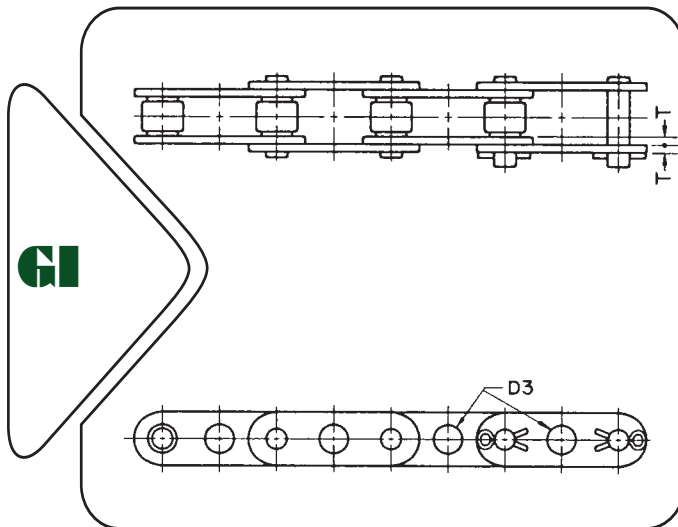


HEAVY DUTY CHAIN ATTACHMENT FOR C2060H



Dimensions-mm

Attachment	R	D3	N	A3	a3	T
C6E	22 1/2°	-	63.50	-	-	3.18
CPE	-	5.90	59.44	23.55	25.40	3.18



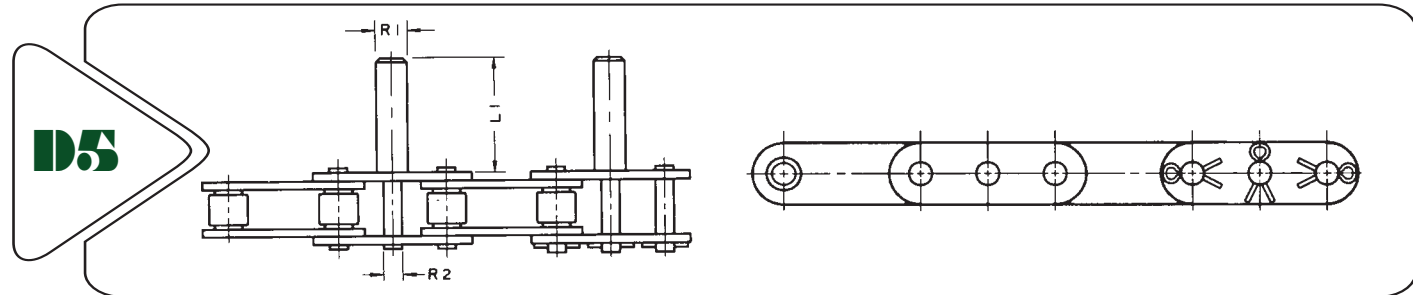
Dimensions-mm

Attachment	Type	A1	A2	F3	D3	G	T
G1	A	-	-	-	6.35	-	3.18
G1	B	-	-	-	7.94	-	3.18
G1	C	-	-	-	8.00	-	3.18
G1	D	-	-	-	8.33	-	3.18
G1	E	-	-	-	9.53	-	3.18
K25	-	30.56	21.44	28.58	6.71	14.68	3.18



HEAVY DUTY CHAIN WITH EXTENDED PIN

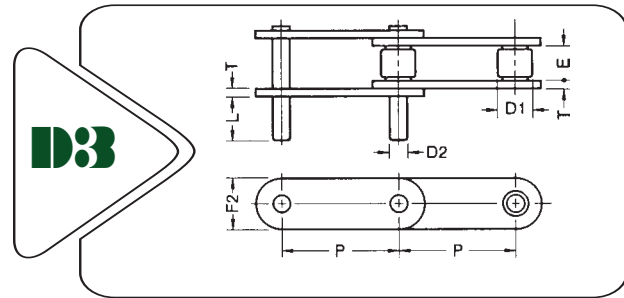
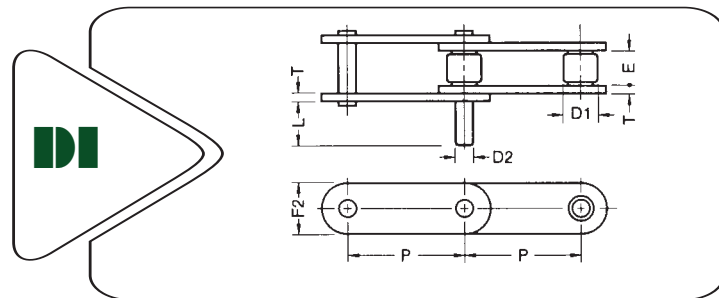
FOR C2060H



Dimensions-mm

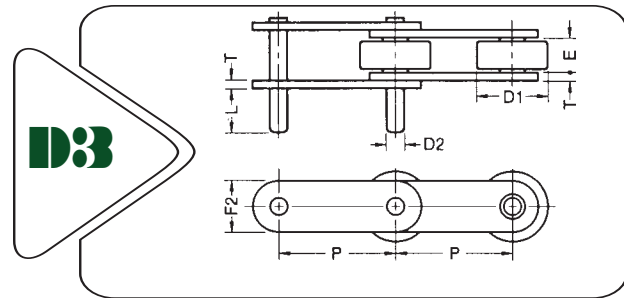
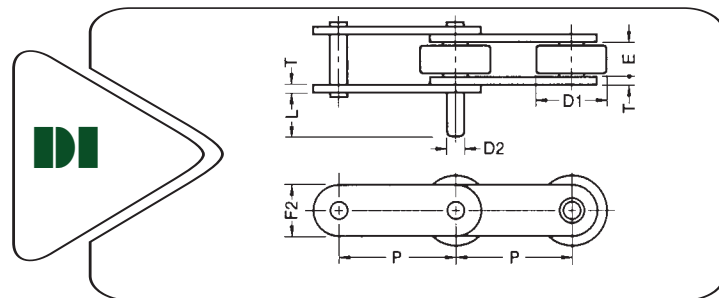
Attachment	Type	R1	R2	L1
D-5	A	12.70	7.87	41.28
D-5	B	14.29	7.87	41.28

STANDARD ROLLERS



ANSI Chain No.	Pitch x Width		Roller D1	Pin			Links		Avg. Ulti. Tensile Strength kgf
	P x E			D2	L	T	F2		
	inch	mm	mm	mm	mm	mm	mm		
C2060H	1 1/2 x 1/2	38.1 x 12.70	11.91	5.96	14.27	3.18	18.09	5500	
C2080H	2 x 5/8	50.8 x 15.88	15.87	7.94	19.05	3.99	24.13	9000	
C2100H	2 1/2 x 3/4	63.5 x 19.05	19.05	9.54	23.62	4.80	30.16	14000	
C2120H	3 x 1	76.2 x 25.40	22.22	11.11	28.58	5.57	36.19	16500	
C2160H	4 x 1 1/4	101.6 x 31.75	28.57	14.29	38.10	7.15	48.26	31500	

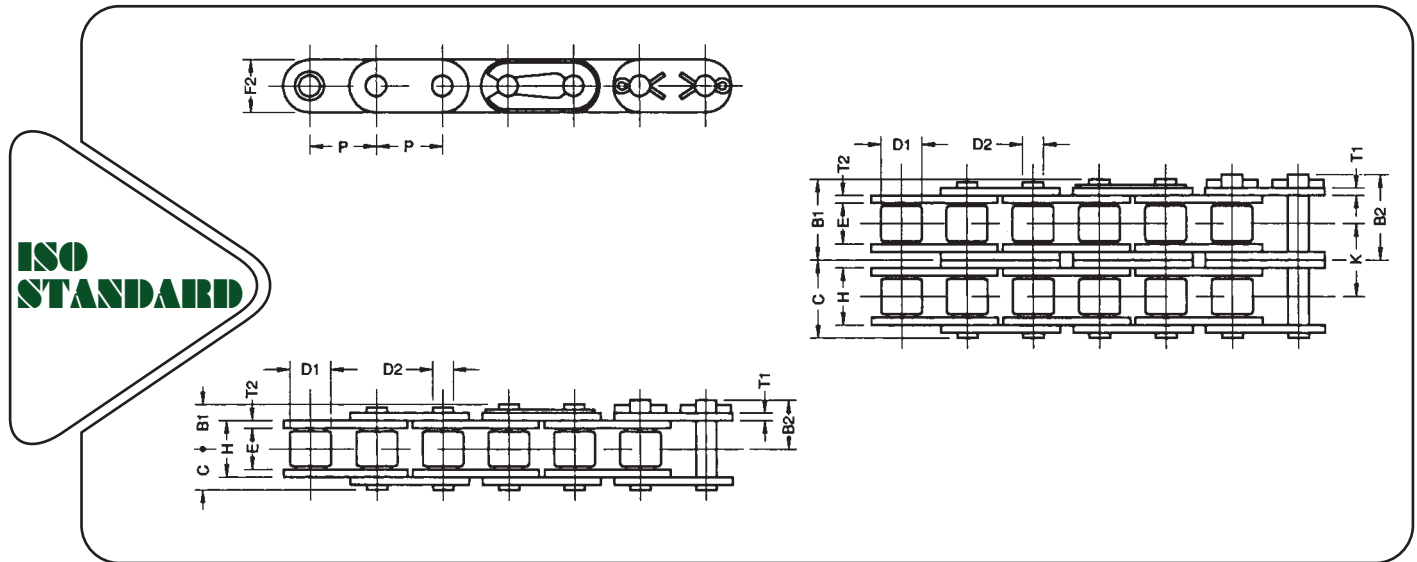
LARGE ROLLERS



ANSI Chain No.	Pitch x Width		Roller D1	Pin			Links		Avg. Ulti. Tensile Strength kgf
	P x E			D2	L	T	F2		
	inch	mm	mm	mm	mm	mm	mm		
C2062H	1 1/2 x 1/2	38.1 x 12.70	22.22	5.96	14.27	3.18	18.09	5500	
C2082H	2 x 5/8	50.8 x 15.88	28.58	7.94	19.05	3.99	24.13	9000	
C2102H	2 1/2 x 3/4	63.5 x 19.05	39.67	9.54	23.62	4.80	30.16	14000	
C2122H	3 x 1	76.2 x 25.40	44.45	11.11	28.58	5.57	36.19	16500	
C2162H	4 x 1 1/4	101.6 x 31.75	57.15	14.29	38.10	7.15	48.26	31500	

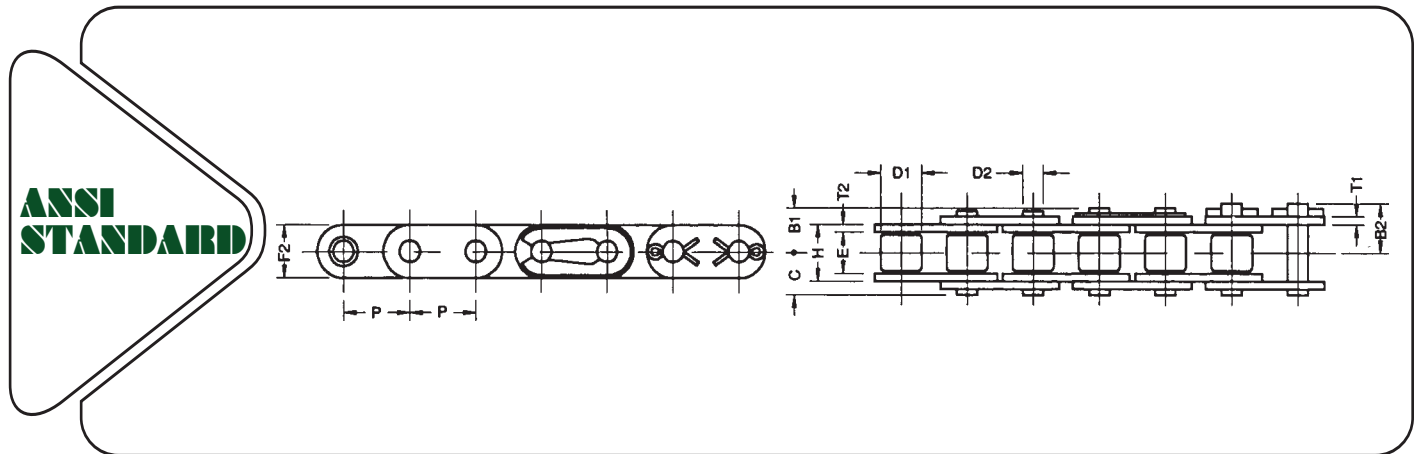


“C” TYPE CHAIN



ISO Chain No.	Pitch x Width		Roller	Pin				Links				Avg. Ulti. Tensile Strength	Approx Weight	
	P x E			D1	C	B1	B2	D2	T1	T2	H			F2
	inch	mm												
C08B	1/2 x 5/16	12.7 x 7.75	8.51	8.24	10.33	10.33	4.45	1.49	1.58	11.30	11.80	1980	0.73	
C10B	5/8 x 3/8	15.875 x 9.65	10.16	9.80	11.55	12.25	5.08	1.71	1.71	13.28	14.70	2580	0.98	
C12B	3/4 x 7/16	19.05 x 11.68	12.07	11.27	13.37	14.57	5.72	1.86	1.86	15.62	16.10	3225	1.28	
C16B	1 x 0.67	25.40 x 17.02	15.88	18.05	19.71	21.11	8.28	3.18	3.99	25.45	21.00	7525	2.89	
C20B	1 1/4 x 0.77	31.75 x 19.56	19.05	20.10	-	24.40	10.19	3.18	4.46	29.01	26.40	10000	3.85	
C32B	2 x 1.22	50.80 x 30.99	29.21	33.15	-	38.15	17.85	6.00	7.00	45.50	42.20	28380	10.17	

NOTE: Multiple strands “C” Type chains available.

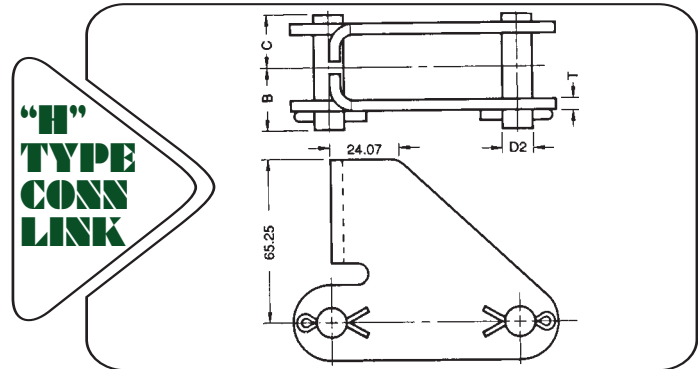
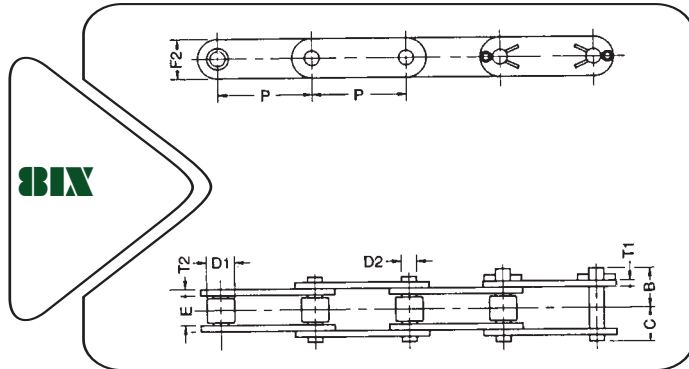


ANSI Chain No.	Pitch x Width		Roller	Pin				Links				Avg. Ulti. Tensile Strength	Approx Weight	
	P x E			D1	C	B1	B2	D2	T1	T2	H			F2
	inch	mm												
C40	1/2 x 5/16	12.70 x 7.79	7.92	8.22	10.32	10.32	3.98	1.49	1.49	11.17	12.06	1830	0.66	
C50	5/8 x 3/8	15.875 x 9.52	10.16	10.15	12.40	12.40	5.09	2.01	2.01	13.84	15.08	3000	1.08	
C60	3/4 x 1/2	19.05 x 12.70	11.91	12.72	15.27	15.27	5.96	2.38	2.38	17.75	18.09	4085	1.54	
C80	1 x 5/8	25.40 x 15.88	15.87	16.50	18.50	19.85	7.94	3.18	3.18	22.60	24.13	7955	2.71	
C100	1 1/4 x 3/4	31.75 x 19.05	19.05	20.19	-	23.19	9.54	3.99	3.99	27.45	30.16	11500	4.47	

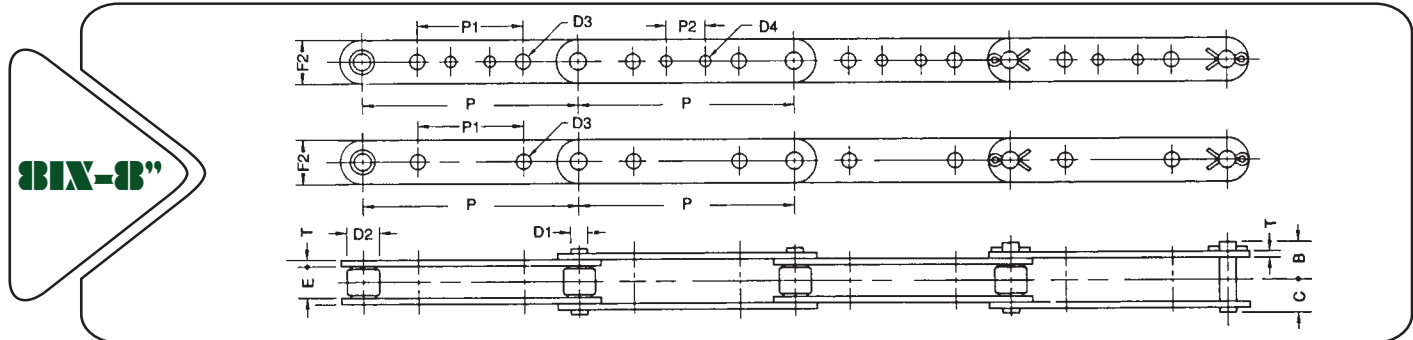
NOTE: Multiple strands “C” type chains available.



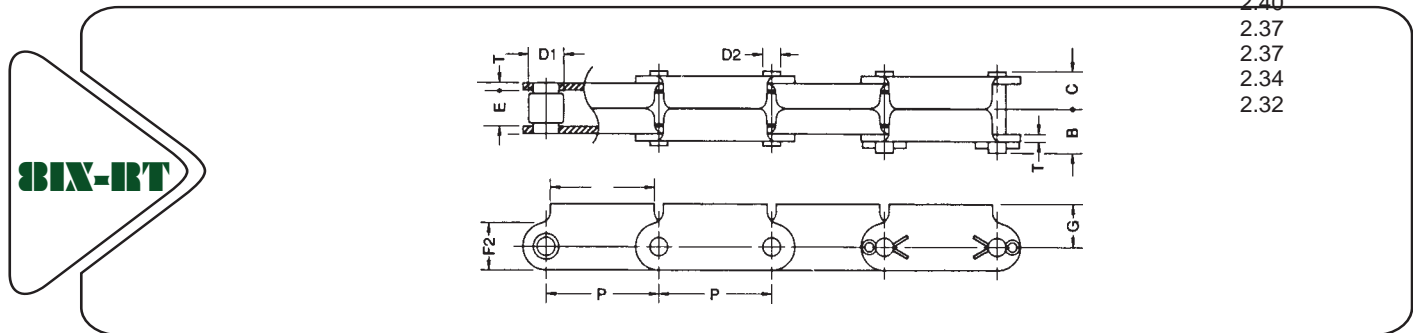
BIX CONVEYOR CHAIN



Chain No.	Pitch x Width		Roller	Pin			Links			Avg. Ulti. Tensile Strength	Approx. Weight	
	P	E		D1	C	B	D2	T1	T2			F2
	inch	mm		mm	mm	mm	mm	mm	mm			mm
81X	2.609 x 1 ^{1/16}	66.27x27.00	23.00	24.78	28.38	11.11	3.9	3.9	28.70	10210	3.69	
81X-KD	2.609 x 1 ^{1/16}	66.27x27.00	23.00	24.78	28.38	11.11	5.9	3.9	28.70	10210	3.18	
81XH	2.609 x 1 ^{1/16}	66.27x27.00	23.00	30.53	35.13	11.11	5.5	7.97	32.10	19350	5.29	
81XHH	2.609 x 1 ^{1/16}	66.27x27.00	23.00	33.13	37.93	11.11	7.97	7.97	32.10	20425	5.99	



Chain No.	Type	Pitch x Width		Roller	Pin			Links		Attachment				Avg. Ulti. Tensile Strength	Approx. Weight
		P x E	D1		C	B	D2	T	F2	P1	D3	P2	D4		
		inch	mm		mm	mm	mm	mm	mm	mm	mm	mm	mm		
81X-8"		8 x 1 ^{1/16}	203.2 x 27.0	23.00	25.78	28.89	11.11	3.99	28.7	-	-	-	-	11500	
81X-8" W/G-2	A	8 x 1 ^{1/16}	203.2 x 27.0	23.00	25.78	28.89	11.11	3.99	28.7	38.10	7.19	-	-	11500	
	B	8 x 1 ^{1/16}	203.2 x 27.0	23.00	25.78	28.89	11.11	3.99	28.7	101.60	7.19	-	-	11500	
	C	8 x 1 ^{1/16}	203.2 x 27.0	23.00	25.78	28.89	11.11	3.99	28.7	92.08	10.37	-	-	11500	
81X-8" W/G-4		8 x 1 ^{1/16}	203.2 x 27.0	23.00	25.78	28.89	11.11	3.99	28.7	32.08	10.37	38.10	7.19	11500	

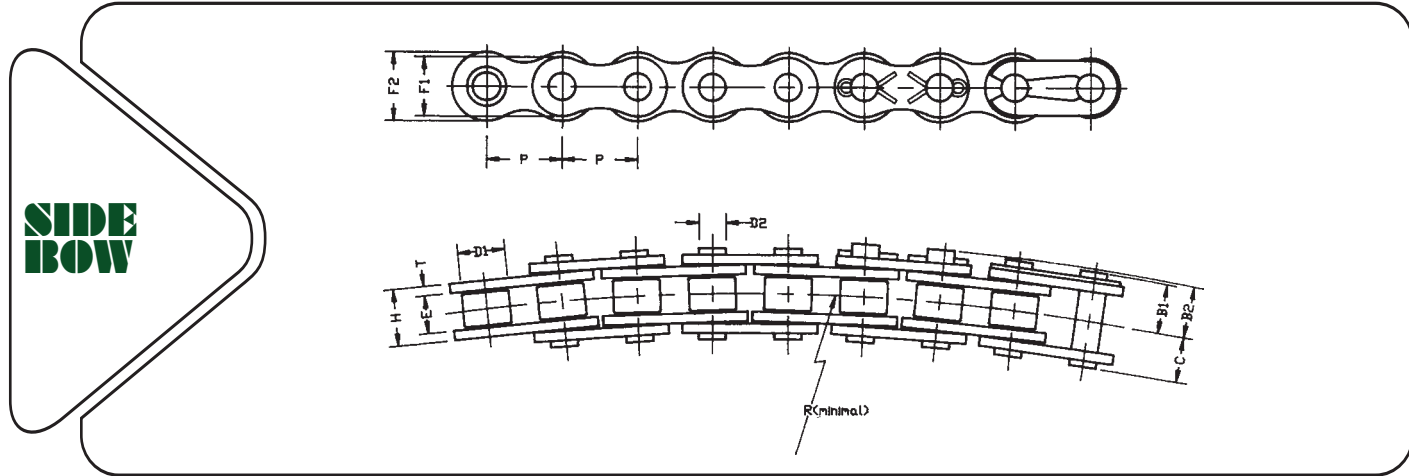


- 2.40
- 2.37
- 2.37
- 2.34
- 2.32

Chain No.	Pitch x Width		Roller	Pin			Links		Attachment		Avg. Ulti. Tensile Strength	Approx. Weight	
	P	E		D1	C	B	D2	T	F2	F3			G
	inch	mm		mm	mm	mm	mm	mm	mm	mm			mm
81X-RT	2.609x1 ^{1/16}	66.27x27.00	23.00	24.78	28.38	11.11	3.96	28.7	63.70	25.4	11500	4.97	

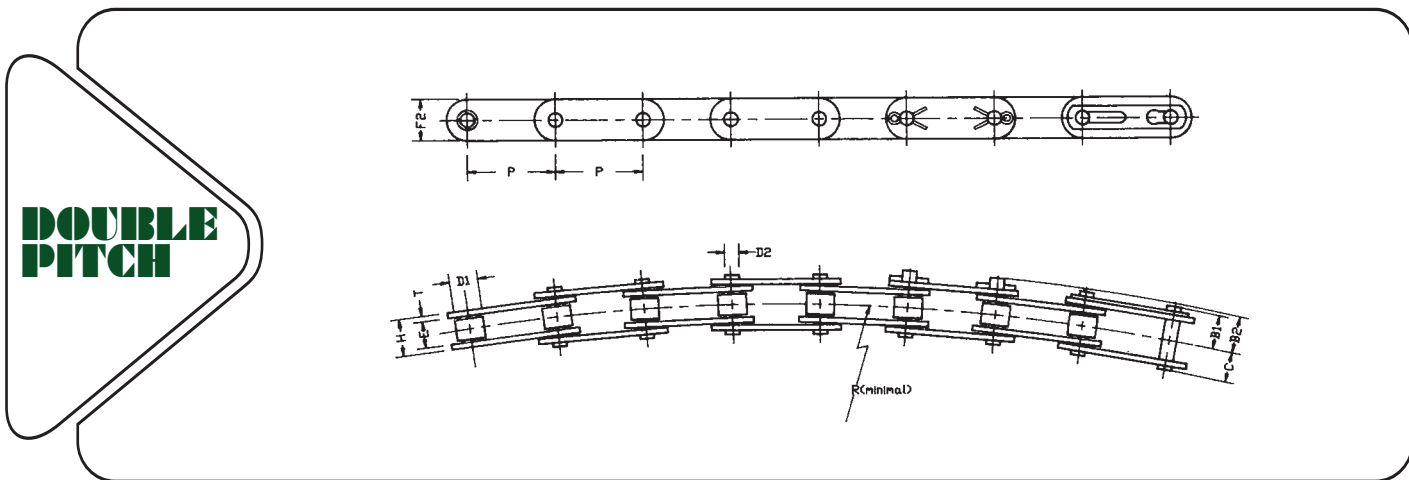


SIDE BOW CHAIN



Chain No.	Pitch x Width		Roller D1 mm	Pin				Links					Maximum Twist Per Foot of Center Distance (Degrees)	Avg. Ulti. Tensile Strength kgf	Approx. Weight kg/m
	P inch	x E mm		C mm	B1 mm	B2 mm	D2 mm	T mm	H mm	F1 mm	F2 mm	R mm			
40SB	1/2 x 5/16	12.70 x 7.92	7.92	8.53	9.52	10.62	3.98	1.49	11.17	10.41	12.06	356	50	1480	0.61
50SB	5/8 x 3/8	15.875x9.52	10.16	10.75	11.95	13.26	5.09	2.01	13.84	13.01	15.08	406	40	2460	1.00
60SB	3/4 x 1/2	19.05x12.70	11.91	13.37	14.37	16.38	5.96	2.38	17.75	15.64	18.09	508	30	3450	1.43
80SB	1 x 5/8	25.4 x15.88	15.87	17.30	18.80	20.12	7.94	3.18	22.60	20.82	24.13	600	20	5800	2.53

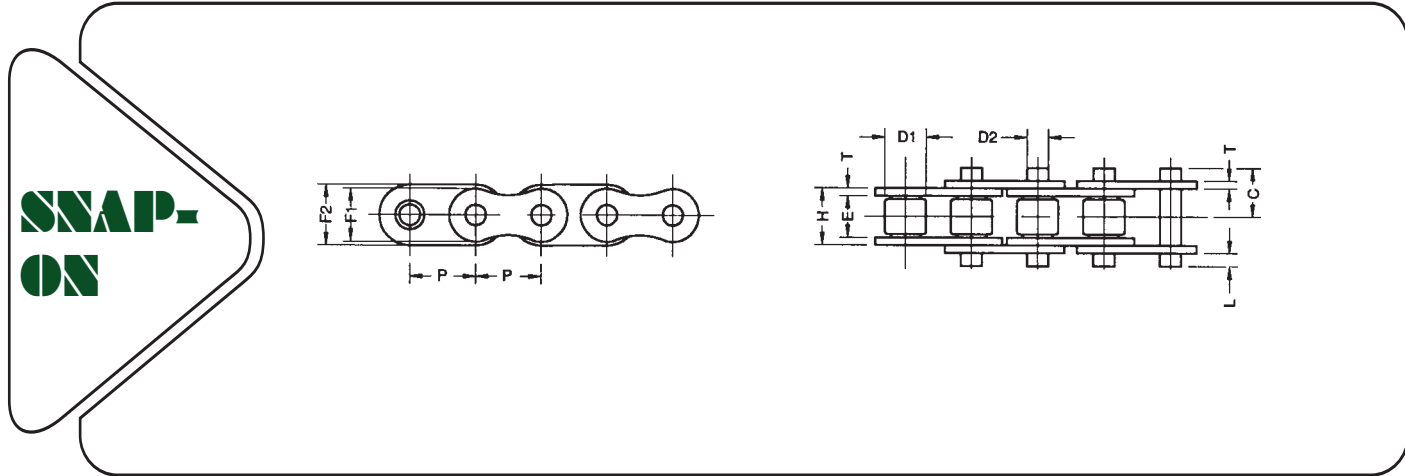
NOTE: For Chain No.35, D-1 = Bushing Diameter



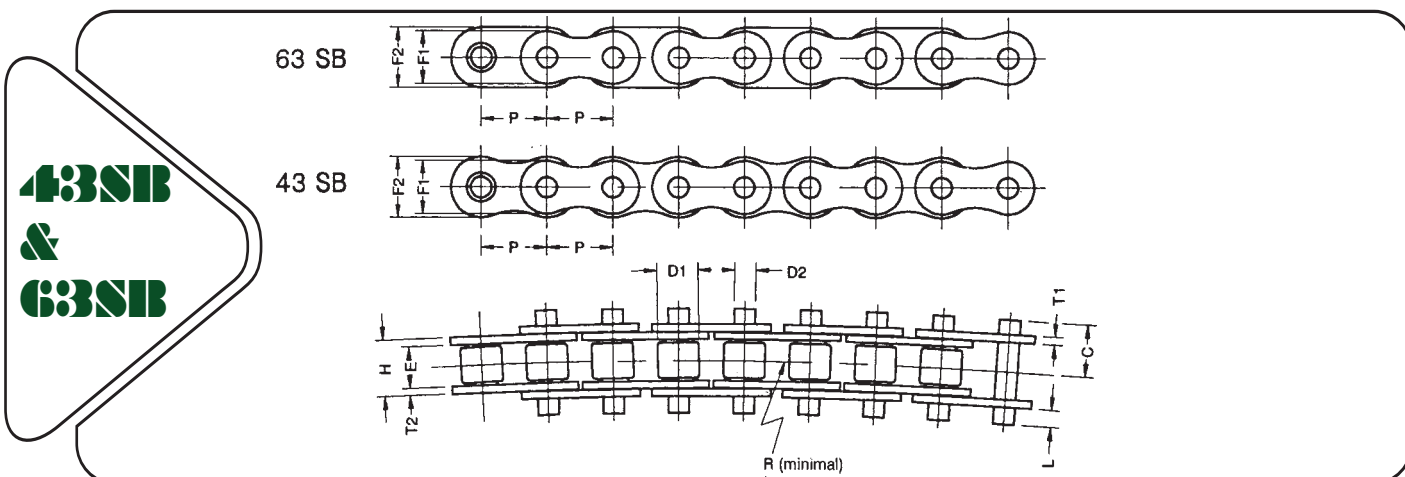
Chain No.	Pitch x Width		Roller D1 mm	Pin				Links					Maximum Twist Per Foot of Center Distance (Degrees)	Avg. Ulti. Tensile Strength kgf	Approx. Weight kg/m
	P inch	x E mm		C mm	B1 mm	B2 mm	D2 mm	T mm	H mm	F2 mm	R mm				
C2040SB	1 x 5/16	25.40x 7.92	7.92	8.53	9.52	10.62	3.98	1.49	11.17	12.06	700	25	1480	0.472	
C2050SB	1 1/4 x 3/8	31.75x 9.52	10.16	10.75	11.95	13.26	5.09	2.01	13.84	15.08	800	20	2460	0.804	
C2060SB	1 1/2 x 1/2	38.10x12.70	11.91	13.37	14.37	16.38	5.96	2.38	17.75	18.09	1000	15	3450	1.13	
C2080SB	2 x 5/8	50.80x15.88	15.87	17.30	18.80	20.12	7.94	3.18	22.60	24.13	1200	10	5800	2.06	



SNAP-ON TOP CHAIN



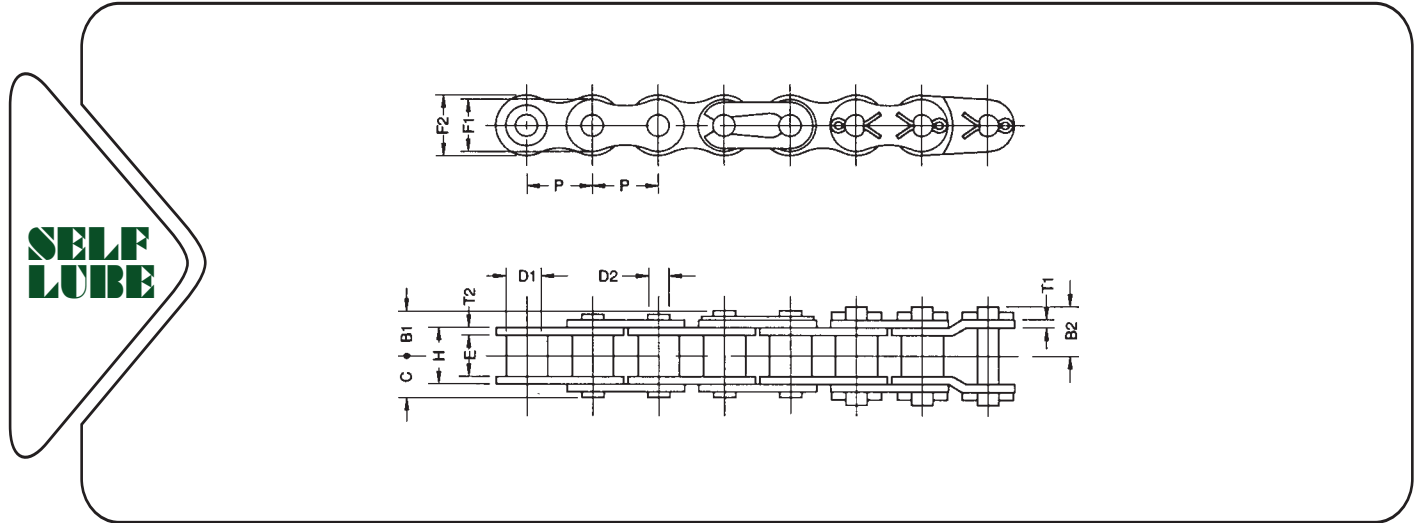
Chain No.	Pitch x Width		Roller	Pin				Links				Avg. Ulti. Tensile Strength	Approx. Weight
	P	E		D1	C	D2	L	T	H	F1	F2		
	inch	mm	mm	mm	mm	mm	mm	mm	mm	mm	mm		
43	1/2 x 5/16	12.70 x 7.92	7.92	8.96	3.98	1.80	1.49	11.17	10.41	12.06	1800	0.65	
43 NP	1/2 x 5/16	12.70 x 7.92	7.92	8.96	3.98	1.80	1.49	11.17	10.41	12.06	1800	0.65	
43 SS	1/2 x 5/16	12.70 x 7.92	7.92	8.96	3.98	1.80	1.49	11.17	10.41	12.06	1440	0.65	
63	3/4 x 1/2	19.05 x 12.70	11.91	14.13	5.96	3.80	2.38	17.75	15.64	18.09	4200	1.52	
63 NP	3/4 x 1/2	19.05 x 12.70	11.91	14.13	5.96	3.80	2.38	17.75	15.64	18.09	4200	1.52	
63 SS	3/4 x 1/2	19.05 x 12.70	11.91	14.13	5.96	3.80	2.38	17.75	15.64	18.09	2650	1.52	



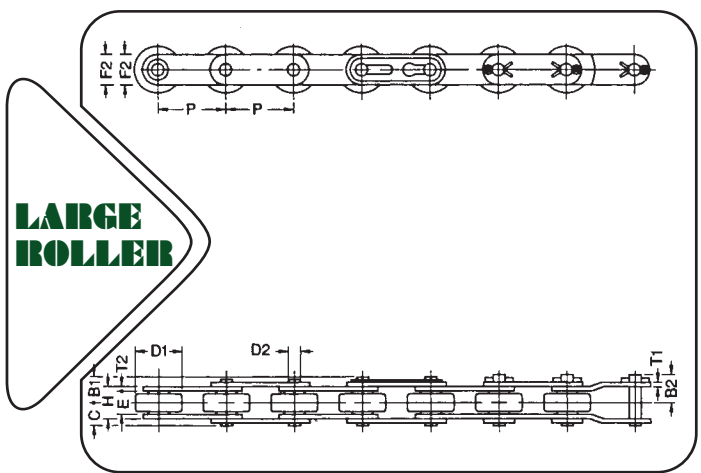
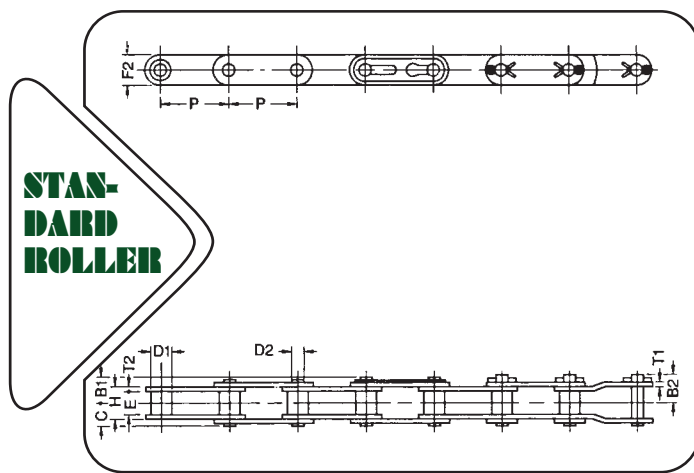
Chain No.	Pitch x Width		Roller	Pin				Links					Avg. Ulti. Tensile Strength	Approx. Weight
	P	E		D1	C	D2	L	T1	T2	H	F1	F2		
	inch	mm	mm	mm	mm	mm	mm	mm	mm	mm	mm	mm		
43 SB	1/2 x 5/16	12.70 x 7.92	7.92	9.26	3.45	1.80	1.49	1.49	11.17	10.41	12.06	305	1250	0.60
43 SB NP	1/2 x 5/16	12.70 x 7.92	7.92	9.26	3.45	1.80	1.49	1.49	11.17	10.41	12.06	305	1250	0.60
43 SB SS	1/2 x 5/16	12.70 x 7.92	7.92	9.26	3.45	1.80	1.49	1.49	11.17	10.41	12.06	305	1050	0.60
63 SB	3/4 x 1/2	19.05 x 12.70	11.91	14.52	5.09	3.20	2.01	2.38	17.75	15.64	18.09	356	2600	1.40
63 SB NP	3/4 x 1/2	19.05 x 12.70	11.91	14.52	5.09	3.20	2.01	2.38	17.75	15.64	18.09	356	2600	1.40
63 SB SS	3/4 x 1/2	19.05 x 12.70	11.91	14.52	5.09	3.20	2.01	2.38	17.75	15.64	18.09	356	2200	1.40



SELF-LUBRICATING CHAIN



Chain No.	Pitch x Width		Bush	Pin				Links					Avg. Ulti. Tensile Strength kgf	Approx. Weight kg/m	
	P x E			D1	C	B1	B2	D2	T1	T2	H	F1			F2
	inch	mm													
40 SL	1/2 x 5/16	12.70 x 7.92	7.92	8.22	10.32	10.32	3.98	1.49	1.49	11.17	10.41	12.06	1250	0.59	
50 SL	5/8 x 3/8	15.875 x 9.52	10.16	10.15	12.40	12.40	5.09	2.01	2.01	13.84	13.01	15.08	2100	0.97	
60 SL	3/4 x 1/2	19.05 x 12.70	11.91	12.72	15.27	15.27	5.96	2.38	2.38	17.75	15.64	18.09	2700	1.36	
80 SL	1 x 5/8	25.4 x 15.88	15.87	16.50	18.50	19.85	7.94	3.18	3.18	22.60	20.82	24.13	5200	2.43	

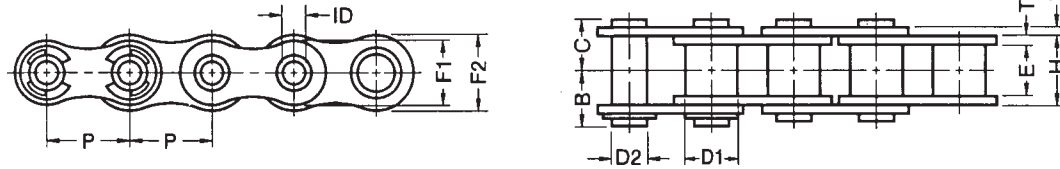


Chain No.	Pitch x Width		Bush	Roller	Pin				Links			Avg. Ulti. Tensile Strength kgf	Approx. Weight kg/m		
	P x E				D1	D1	C	B1	B2	D2	T			H	F2
	inch	mm													
C2040SL	1 x 5/16	25.4 x 7.92	7.92	-	8.22	10.32	10.32	3.98	1.49	11.17	12.06	1250	0.45		
C2050SL	1 1/4 x 3/8	31.75 x 9.52	10.16	-	10.15	12.40	12.40	5.09	2.01	13.84	15.08	2100	0.75		
C2060SL	1 1/2 x 1/2	38.10 x 12.70	11.91	-	12.72	15.27	15.27	5.96	2.38	17.75	18.09	2700	1.09		
C2080SL	2 x 5/8	50.80 x 15.88	15.87	-	16.50	-	19.85	7.94	3.18	22.60	24.13	5200	1.91		
C2042SL	1 x 5/16	25.4 x 7.92	-	15.88	8.22	10.32	10.32	3.98	1.49	11.17	12.06	1250	0.81		
C2052SL	1 1/4 x 3/8	31.75 x 9.52	-	19.05	10.15	12.40	12.40	5.09	2.01	13.84	15.08	2100	1.24		
C2062SL	1 1/2 x 1/2	38.10 x 12.70	-	22.22	12.72	15.27	15.27	5.96	2.38	17.75	18.09	2700	1.80		
C2082SL	2 x 5/8	50.80 x 15.88	-	28.58	16.50	-	19.85	7.94	3.18	22.60	24.13	5200	3.08		



HOLLOW PIN CHAIN

SINGLE PITCH



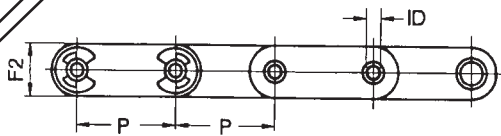
Chain No.	Pitch x Width		Bush	Hollow Pin				Links				Avg. Ulti. Tensile Strength kgf	Approx. Weight kg/m
	P	E	D1	C	B	ID	D2	T	H	F1	F2		
	inch	mm	mm	mm	mm	mm	mm	mm	mm	mm	mm		
40HP	1/2 x 5/16	12.70 x 7.92	7.92	8.38	9.06	4.0	7.29	2.01	13.84	13.01	15.08	2100	0.82
50HP	5/8 x 3/8	15.875 x 9.52	10.16	10.36	11.66	5.12	8.42	2.38	17.75	15.64	18.09	2700	1.00
60HP	3/4 x 1/2	19.05 x 12.70	11.91	13.03	14.05	5.98	11.42	3.18	22.60	20.82	24.13	5200	2.10
80HP	1 x 5/8	25.40 x 15.88	15.87	16.82	17.76	8.08	1.49	11.17	10.41	12.06	1300	0.52	

NOTE: Also available in 304 stainless steel

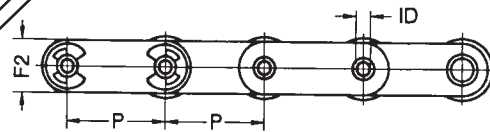
5.71

DOUBLE PITCH

STANDARD ROLLER



LARGE ROLLER

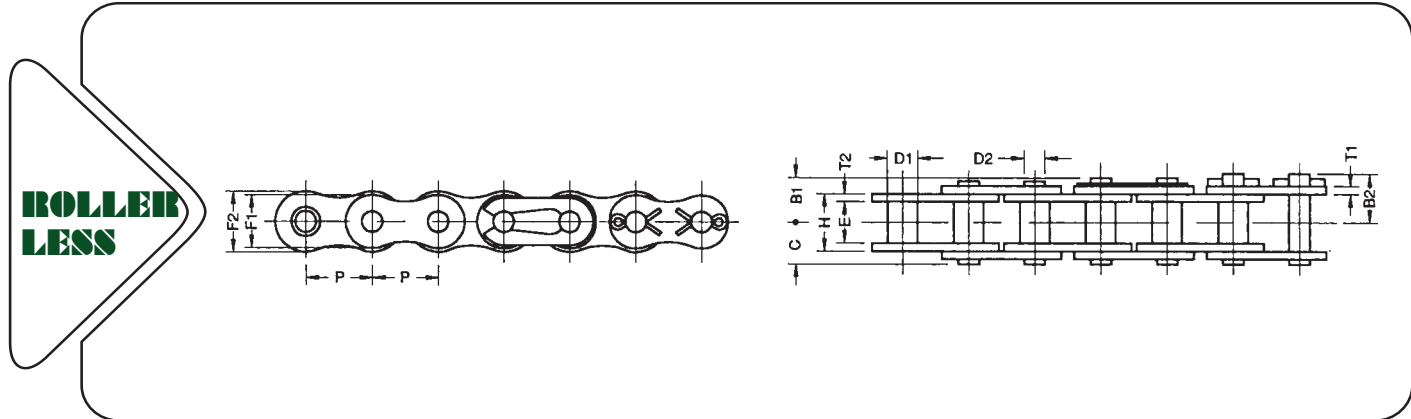


Chain No.	Pitch x Width		Bush/Roller	Hollow Pin				Links			Avg. Ulti. Tensile Strength kgf	Approx. Weight kg/m
	P	E	D1	C	B	ID	D2	T	H	F2		
	inch	mm	mm	mm	mm	mm	mm	mm	mm	mm		
C2040HP	1 x 5/16	25.4 x 7.92	7.92	8.38	9.06	4.10	5.71	1.49	11.17	12.06	1300	0.42
C2050HP	1 1/4 x 3/8	31.75 x 9.52	10.16	10.36	11.66	5.12	7.29	2.01	13.84	15.08	2100	0.72
C2060HP	1 1/2 x 1/2	38.10 x 12.70	11.91	13.03	14.05	5.98	8.42	2.38	17.75	18.09	2700	1.01
C2080HP	2 x 5/8	50.80 x 15.88	15.87	16.82	17.76	8.08	11.42	3.18	22.60	24.13	5200	2.54
C2042HP	1 x 5/16	25.40 x 7.92	15.88	8.38	9.06	4.0	5.71	1.49	11.17	12.06	1300	0.83
C2052HP	1 1/4 x 3/8	31.75 x 9.52	19.05	10.36	11.66	5.12	7.29	2.01	13.84	15.08	2100	1.28
C2062HP	1 1/2 x 1/2	38.10 x 12.70	22.22	13.03	14.05	5.98	8.42	2.38	17.75	18.09	2700	1.85
C2082HP	2 x 5/8	50.80 x 15.88	28.58	16.82	17.76	8.08	11.42	3.18	22.60	24.13	5200	3.58

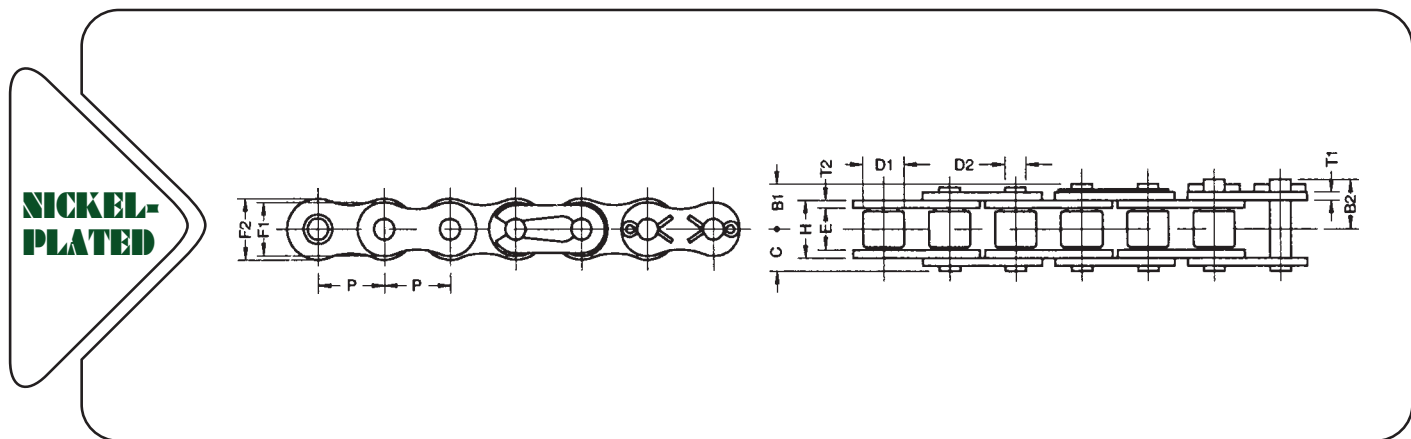
NOTE: Also available in 304 stainless steel



ROLLERLESS CHAIN & NICKEL-PLATED CHAIN



Chain No.	Pitch x Width		Bush	Pin				Links					Avg. Ulti. Tensile Strength kgf	Approx. Weight kg/m	
	P x E			D1	C	B1	B2	D2	T1	T2	H	F1			F2
	inch	mm													
55	5/8 x 3/8	15.875 x 9.52	7.06	10.15	12.40	12.40	5.09	2.01	2.01	13.84	13.01	15.08	3000	0.84	
65	3/4 x 1/2	19.05 x 12.70	8.39	12.72	15.27	15.27	5.96	2.38	2.38	17.75	15.64	18.09	4085	1.17	
85	1 x 5/8	25.4 x 15.88	11.25	16.50	18.50	19.85	7.94	3.18	3.18	22.60	20.82	24.13	7955	2.08	
105	1 1/4 x 3/4	31.75 x 19.05	13.6	20.19	-	23.19	9.54	3.99	3.99	27.45	26.03	30.16	11500	3.34	



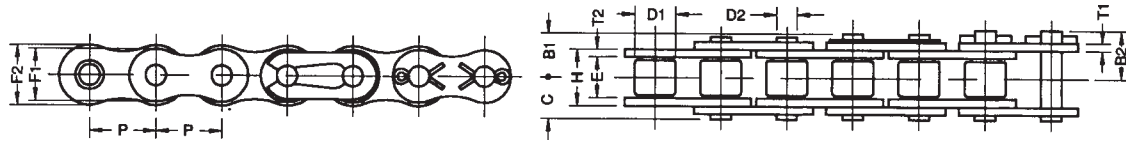
Chain No.	Pitch x Width		Roller	Pin				Links					Avg. Ulti. Tensile Strength kgf	Approx. Weight kg/m	
	P x E			D1	C	B1	B2	D2	T1	T2	H	F1			F2
	inch	mm													
25NP	1/4 x 1/8	6.35 x 3.18	3.30	3.91	4.71	-	2.32	0.76	0.76	4.80	5.01	5.81	420	0.13	
35NP	3/8 x 3/16	9.525 x 4.78	5.08	5.89	6.46	6.79	3.59	1.28	1.28	7.46	7.80	9.04	1050	0.32	
40NP	1/2 x 5/16	12.70 x 7.92	7.92	8.22	10.32	10.32	3.98	1.49	1.49	11.17	10.41	12.06	1830	0.62	
41NP	1/2 x 1/4	12.70 x 6.35	7.77	6.69	8.49	8.49	3.59	1.28	1.28	9.06	8.50	9.90	1250	0.41	
50NP	5/8 x 3/8	15.875 x 9.52	10.16	10.15	12.40	12.40	5.09	2.01	2.01	13.84	13.01	15.08	3000	1.01	
60NP	3/4 x 1/2	19.05 x 12.70	11.91	12.72	15.27	15.27	5.96	2.38	2.38	17.75	15.64	18.09	4085	1.45	
80NP	1 x 5/8	25.40 x 15.88	15.87	16.50	18.50	19.85	7.94	3.18	3.18	22.60	20.82	24.13	7955	2.55	
100NP	1 1/4 x 3/4	31.75 x 19.05	19.05	20.19	-	23.19	9.54	3.99	3.99	27.45	26.03	30.16	11500	3.95	

NOTE: For Chain No. 25NP and 35NP, D1 = Bushing Diameter
 Nickel plated chains can be furnished in all sizes besides of those shown above, also chains with attachment, etc.



STAINLESS STEEL SUS 304 CHAIN

**SINGLE
STRAND**

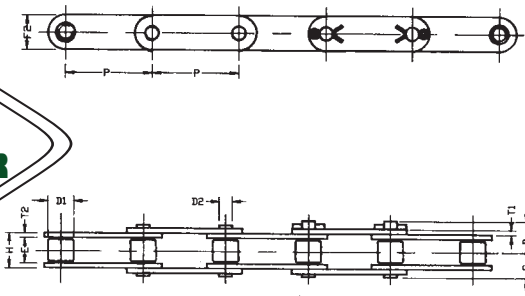


ANSI Chain No.	Pitch x Width		Roller	Pin				Links					Avg. Ulti. Tensile Strength	Approx Weight	
	P x E			D1	C	B1	B2	D2	T1	T2	H	F1			F2
	inch	mm													
25SS	1/4 x 1/8	6.35 x 3.18	3.30	3.91	4.71	-	2.32	0.76	0.76	4.80	5.01	5.81	300	0.13	
25SS-2	1/4 x 1/8	6.35 x 3.18	3.30	7.11	7.91	-	2.32	0.76	0.76	4.80	5.01	5.81	538	0.25	
25SS-3	1/4 x 1/8	6.35 x 3.18	3.30	10.53	10.93	-	2.32	0.76	0.76	4.80	5.01	5.81	806	0.37	
35SS	3/8 x 3/16	9.525 x 4.78	5.08	5.89	7.04	7.69	3.59	1.28	1.28	7.46	7.80	9.04	700	0.32	
40SS	1/2 x 5/16	12.70 x 7.92	7.92	8.22	9.22	10.32	3.98	1.49	1.49	11.17	10.41	12.06	1250	0.62	
41SS	1/2 x 1/4	12.70 x 6.35	7.77	6.69	8.04	8.49	3.59	1.28	1.28	9.06	8.50	9.90	700	0.41	
50SS	5/8 x 3/8	15.875 x 9.52	10.16	10.15	11.35	12.40	5.09	2.01	2.01	13.84	13.01	15.08	2250	1.01	
60SS	3/4 x 1/2	19.05 x 12.70	11.91	12.72	13.72	15.27	5.96	2.38	2.38	17.75	15.64	18.09	3000	1.45	
60HSS	3/4 x 1/2	19.05 x 12.70	11.91	14.40	15.40	16.90	5.96	2.38	2.38	17.75	15.64	18.09	3000	1.73	
80SS	1 x 5/8	25.4 x 15.88	15.87	16.50	18.50	19.85	7.94	3.18	3.18	22.60	20.82	24.13	4800	2.55	
80HSS	1 x 5/8	25.4 x 15.88	15.87	18.15	-	22.55	7.94	3.18	3.18	22.60	20.82	24.13	5375	2.97	
100SS	1 1/4 x 3/4	31.75 x 19.05	19.05	20.19	-	23.19	9.54	3.99	3.99	27.45	26.03	30.16	6000	3.95	

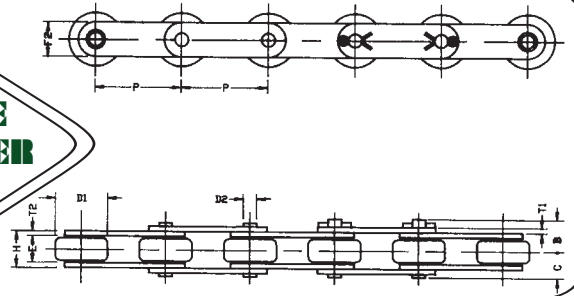
NOTE: For Chain No. 25SS and 35SS, D1 = Bushing Diameter

ISO Chain No.	Pitch x Width		Roller	Pin				Links					Avg. Ulti. Tensile Strength	Approx Weight	
	P x E			D1	C	B1	B2	D2	T1	T2	H	F1			F2
	inch	mm													
05BSS	0.315x 0.118	8 x 3	5.00	3.91	4.71	-	2.31	0.78	0.78	4.77	7.10	7.10	300	0.164	
06BSS	3/8 x 7/32	9.525 x 5.72	6.35	6.13	7.08	7.83	3.28	1.28	1.28	8.53	8.20	8.20	700	0.41	
08BSS	1/2 x 5/16	12.7 x 7.75	8.51	8.24	10.33	10.33	4.45	1.49	1.58	11.30	10.92	11.80	1250	0.66	
10BSS	5/8 x 3/8	15.875 x 9.65	10.16	9.80	11.55	12.25	5.08	1.71	1.71	13.28	13.72	14.70	1650	0.92	
12BSS	3/4 x 7/16	19.05 x 11.68	12.07	11.27	13.36	14.56	5.72	1.86	1.86	15.62	16.10	16.10	2100	1.21	
16BSS	1 x 0.67	25.40 x 17.02	15.88	18.05	19.71	21.11	8.28	3.18	3.99	25.45	21.00	21.00	5000	2.66	

**STAN-
DARD
ROLLER**



**LARGE
ROLLER**

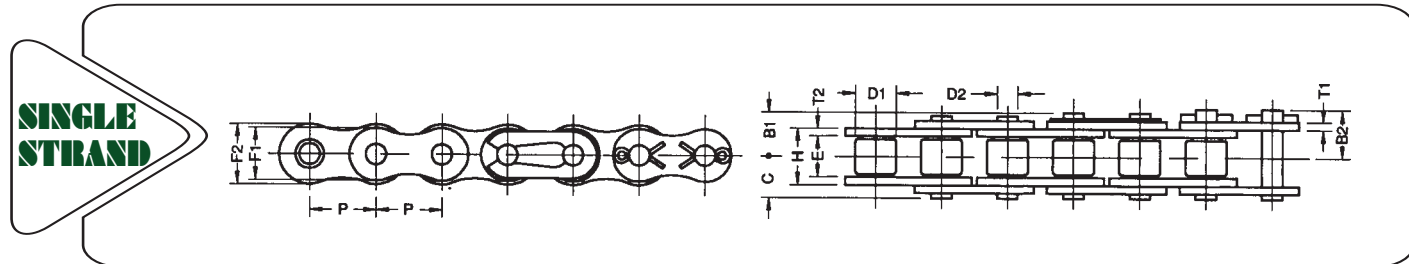


ANSI Chain No.	Pitch x Width		Roller	Pin				Links					Avg. Ulti. Tensile Strength	Approx. Weight
	P x E			D1	C	B	D2	T1	T2	H	F2			
	inch	mm										mm		
C2040SS	1 x 5/16	25.4 x 7.92	7.92	8.22	10.32	3.98	1.49	1.49	11.17	12.06	1250	0.472		
C2050SS	1 1/4 x 3/8	31.75 x 9.52	10.16	10.15	12.40	5.09	2.01	2.01	13.84	15.08	2250	0.804		
C2060SS	1 1/2 x 1/2	38.10 x 12.70	11.91	12.72	15.27	5.96	2.38	2.38	17.75	18.09	2800	1.13		
C2060HSS	1 1/2 x 1/2	38.10 x 12.70	11.91	14.40	16.90	5.96	3.18	3.18	19.43	18.09	3000	1.41		
C2080SS	2 x 5/8	50.8 x 15.88	15.87	16.50	19.85	7.94	3.18	3.18	22.60	24.13	4800	2.08		
C2080HSS	2 x 5/8	50.8 x 15.88	15.87	18.15	22.55	7.94	3.99	3.99	24.28	24.13	5200	2.38		
C2042SS	1 x 5/16	25.4 x 7.92	15.88	8.22	10.32	3.98	1.49	1.49	11.17	12.06	1800	0.827		
C2052SS	1 1/4 x 3/8	31.75 x 9.52	19.05	10.15	12.40	5.09	2.01	2.01	13.84	15.08	2250	1.27		
C2062SS	1 1/2 x 1/2	38.10 x 12.70	22.22	12.72	15.27	5.96	2.38	2.38	17.75	18.09	2800	1.85		
C2062HSS	1 1/2 x 1/2	38.10 x 12.70	22.22	14.40	16.90	5.96	3.18	3.18	19.43	18.09	3000	2.12		
C2082SS	2 x 5/8	50.8 x 15.88	28.58	16.50	19.85	7.94	3.18	3.18	22.60	24.13	4800	3.14		
C2082HSS	2 x 5/8	50.8 x 15.88	28.58	18.15	22.55	7.94	3.99	3.99	24.28	24.13	5200	3.44		

NOTE: PHSS chains & 304 SS chain w/solid rollers available on request.

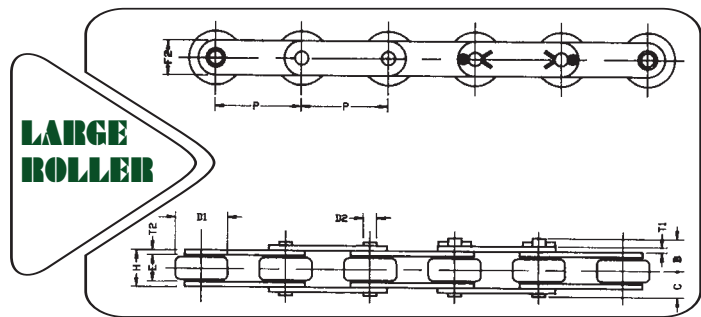
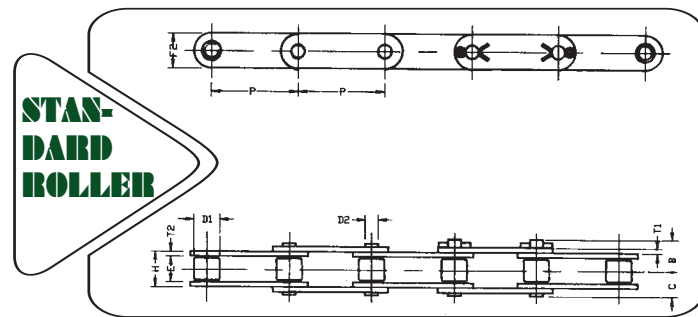


PRECIPITATION HARDENED STAINLESS STEEL CHAIN



NOTE: For Chain No. 25SS and 35SS, D1 = Bushing Diameter

ISO Chain No.	Pitch x Width		Roller		Pin			Links					Avg. Ulti. Tensile Strength kgf	Approx. Weight kg/m
	P x E		D1 mm	C mm	B1 mm	B2 mm	D2 mm	T1 mm	T2 mm	H mm	F1 mm	F2 mm		
	inch	mm												
25 PHSS	1/4 x 1/8	6.35 x 3.18	3.30	3.91	4.71	—	2.32	0.76	0.76	4.80	5.01	5.82	290	0.13
25-2 PHSS	1/4 x 1/8	6.35 x 3.18	3.30	7.11	7.91	—	2.32	0.76	0.76	4.80	5.01	5.82	580	0.25
25-3 PHSS	1/4 x 1/8	6.35 x 3.18	3.30	10.53	10.93	—	2.32	0.76	0.76	4.80	5.01	5.82	870	0.37
35 PHSS	3/8 x 3/16	9.525 x 4.78	5.08	5.89	7.04	7.69	3.59	1.28	1.28	7.46	7.80	9.04	770	0.32
40 PHSS	1/2 x 5/16	12.70 x 7.92	7.92	8.22	9.22	10.32	3.98	1.49	1.49	11.17	10.41	12.06	1450	0.62
41 PHSS	1/2 x 1/4	12.70 x 6.35	7.77	6.69	8.04	8.49	3.59	1.28	1.28	9.06	8.5	9.9	780	0.41
50 PHSS	5/8 x 3/8	15.875 x 9.52	10.16	10.15	11.35	12.40	5.09	2.01	2.01	13.84	13.01	13.01	2420	1.01
60 PHSS	3/4 x 1/2	19.05 x 12.70	11.91	12.72	13.72	15.27	5.96	2.38	2.38	17.75	15.64	18.09	3225	1.45
60H PHSS	3/4 x 1/2	19.05 x 12.70	11.91	14.40	15.40	16.90	5.96	2.38	2.38	17.75	15.64	18.09	3550	1.73
80 PHSS	1 x 5/8	25.40 x 15.88	15.87	16.50	18.50	19.85	7.94	3.18	3.18	22.60	20.82	24.13	6020	2.55
80H PHSS	1 x 5/8	25.40 x 15.88	15.87	18.15	—	19.85	7.94	3.18	3.18	22.60	20.82	24.13	6450	2.55

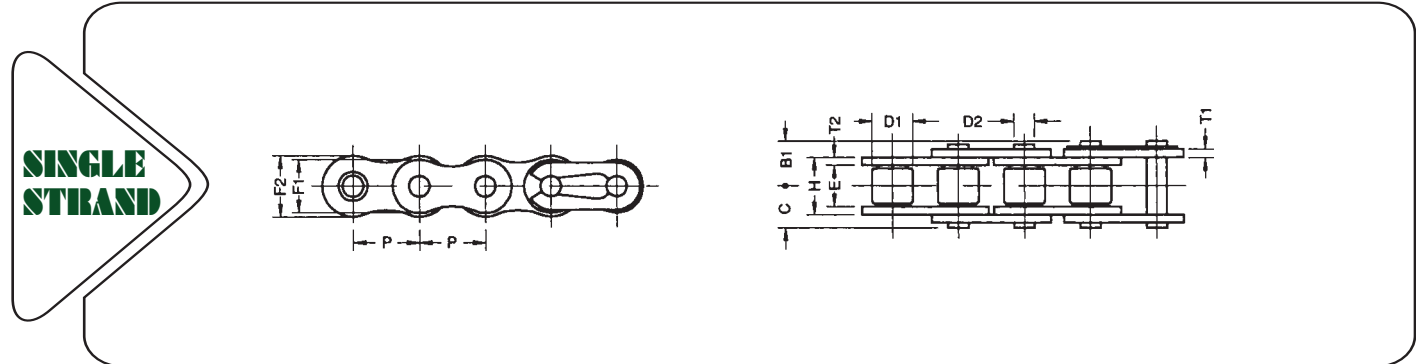


ANSI Chain No.	Pitch x Width		Roller		Pin			Links					Avg. Ulti. Tensile Strength kgf	Approx. Weight kg/m
	P x E		D1 mm	C mm	B mm	D2 mm	T1 mm	T2 mm	H mm	F2 mm				
	inch	mm												
C2040 PHSS	1 x 5/16	25.4 x 7.92	7.92	8.22	10.32	3.98	1.49	1.49	11.17	12.06	1250	0.472		
C2050 PHSS	1 1/4 x 3/8	31.75 x 9.52	10.16	10.15	12.40	5.09	2.01	2.01	13.84	15.08	2250	0.804		
C2060 PHSS	1 1/2 x 1/2	38.10 x 12.70	11.91	12.72	15.27	5.96	2.38	2.38	17.75	18.09	2800	1.13		
C2060H PHSS	1 1/2 x 1/2	38.10 x 12.70	11.91	14.40	16.90	5.96	3.18	3.18	19.43	18.09	3000	1.41		
C2080 PHSS	2 x 5/8	50.8 x 15.88	15.87	16.50	19.85	7.94	3.18	3.18	22.60	24.13	4800	2.08		
C2080H PHSS	2 x 5/8	50.8 x 15.88	15.87	18.15	22.55	7.94	3.99	3.99	24.28	24.13	5200	2.38		
C2042 PHSS	1 x 5/16	25.4 x 7.92	15.88	8.22	10.32	3.98	1.49	1.49	11.17	12.06	1800	0.827		
C2052 PHSS	1 1/4 x 3/8	31.75 x 9.52	19.05	10.15	12.40	5.09	2.01	2.01	13.84	15.08	2250	1.27		
C2062 PHSS	1 1/2 x 1/2	38.10 x 12.70	22.22	12.72	15.27	5.96	2.38	2.38	17.75	18.09	2800	1.85		
C2062H PHSS	1 1/2 x 1/2	38.10 x 12.70	22.22	14.40	16.90	5.96	3.18	3.18	19.43	18.09	3000	2.12		
C2082 PHSS	2 x 5/8	50.8 x 15.88	28.58	16.50	19.85	7.94	3.18	3.18	22.60	24.13	4800	3.14		
C2082H PHSS	2 x 5/8	50.8 x 15.88	28.58	18.15	22.55	7.94	3.99	3.99	24.28	24.13	5200	3.44		

NOTE: PHSS chains & 304 SS chain w/solid rollers available on request.



BICYCLE & MOTORCYCLE CHAIN



BICYCLE CHAINS

Chain No.	Pitch x Width		Roller	Pin			Links					Avg. Ulti. Tensile Strength kgf	Approx Weight kg/m	
	P x E			D1	C	B1	D2	T1	T2	H	F1			F2
	inch	mm		mm	mm	mm	mm	mm	mm	mm	mm			mm
410	1/2 x 1/8	12.7 x 3.45	7.75	4.69	5.89	3.62	1.02	1.02	5.58	8.50	9.90	1000	0.28	
415	1/2 x 3/16	12.7 x 4.88	7.75	5.44	6.54	3.62	1.02	1.02	6.98	8.50	9.90	1000	0.32	
510	5/8 x 1/8	15.875 x 3.45	7.75	4.69	5.89	3.62	1.02	1.02	5.58	8.50	9.90	1000	0.30	
515	5/8 x 3/16	15.875 x 4.88	7.75	5.44	6.54	3.62	1.02	1.02	6.98	8.50	9.90	1000	0.31	

MOTORCYCLE CHAIN

Chain No.	Pitch x Width		Roller	Pin			Links					Avg. Ulti. Tensile Strength kgf	Approx Weight kg/m	
	P x E			D1	C	B1	D2	T1	T2	H	F1			F2
	inch	mm		mm	mm	mm	mm	mm	mm	mm	mm			mm
415B	1/2 x 3/16	12.7 x 4.88	7.75	6.13	7.22	4.09	1.28	1.28	7.65	9.70	11.45	1550	0.44	
415H	1/2 x 3/16	12.7 x 4.88	7.75	6.55	7.75	4.19	1.49	1.49	8.05	9.70	11.45	1700	0.49	
420	1/2 x 1/4	12.7 x 6.40	7.75	7.20	8.55	3.98	1.49	1.49	9.75	10.41	12.06	1800	0.57	
420H	1/2 x 1/4	12.7 x 6.40	7.75	8.22	9.32	3.98	1.84	1.84	10.30	10.41	12.06	1880	0.656	
428	1/2 x 5/16	12.7 x 7.95	8.51	8.24	10.34	4.45	1.49	1.49	11.30	10.92	11.81	1850	0.66	
428H	1/2 x 5/16	12.7 x 7.95	8.51	9.29	10.28	4.45	2.01	2.01	12.34	10.92	11.81	2300	0.78	
520	5/8 x 1/4	15.875 x 6.40	10.16	8.45	9.70	5.09	2.01	2.01	10.71	13.01	15.08	3000	0.89	
520D	5/8 x 1/4	15.875 x 6.40	10.16	8.30	9.30	5.09	2.01	2.01	10.71	13.01	15.08	2645	0.84	
520H	5/8 x 1/4	15.875 x 6.40	10.16	9.36	10.45	5.34	2.38	2.38	11.45	13.01	15.08	3400	1.01	
530	5/8 x 3/8	15.875 x 9.53	10.16	9.30	10.50	5.09	2.01	2.01	13.84	13.01	15.08	3000	1.01	
530H	5/8 x 3/8	15.875 x 9.53	10.16	11.06	12.05	5.34	2.38	2.38	14.58	13.01	15.08	3400	1.14	

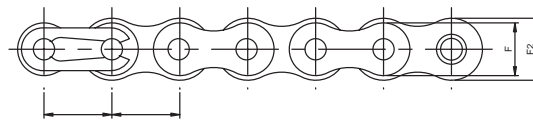
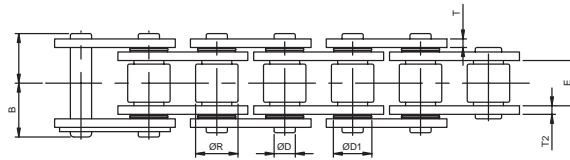
NON-STANDARD CHAIN

Chain No.	Pitch x Width		Roller	Pin			Links					Avg. Ulti. Tensile Strength kgf	Approx Weight kg/m	
	P x E			D1	C	B1	D2	T1	T2	H	F1			F2
	inch	mm		mm	mm	mm	mm	mm	mm	mm	mm			mm
423	1/2 x 1/4	12.7 x 6.40	8.51	7.31	8.56	4.45	1.49	1.49	9.75	10.92	11.81	1850	0.60	

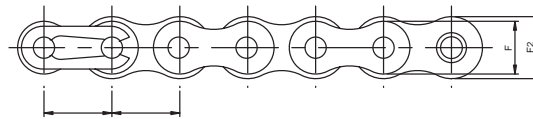
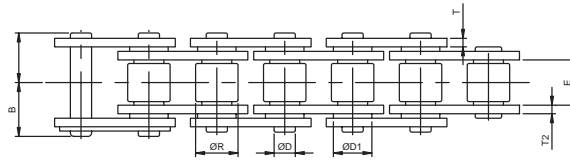


MOTORCYCLE X-RING CHAIN

**X-RING
CHAIN**



**O-RING
CHAIN**

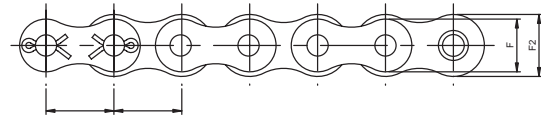
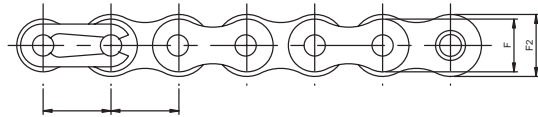
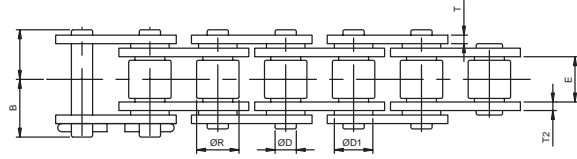
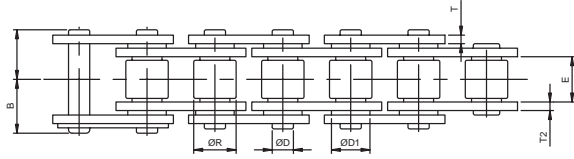


Chain No.	Pitch x Width		Roller	Pin				Links				Avg. Ulti. Tensile Strength	Approx Weight
	P x E			Ø R	C	B1	Ø D	Ø D1	T1	T2	F1		
	inch	mm	mm	mm	mm	mm	mm	mm	mm	mm	mm	kgf	kg/m
428MS0(X)	1/2 x 5/16	12.70 x 7.75	8.51	10.08	10.92	4.45	9.11	1.86	1.86	11.80	11.80	2280	0.832
520SO(X)	5/8 x 0.252	15.875 x 6.40	10.14	9.91	10.74	5.24	10.98	2.01	2.01	12.85	15.00	3440	1.096
520HSO(X)	5/8 x 0.252	15.875 x 6.40	10.14	10.73	11.52	5.24	10.98	2.38	2.38	15.00	15.00	4085	1.234
525SO(X)	5/8 x 0.314	15.875 x 7.98	10.14	10.73	11.52	5.24	10.98	2.01	2.01	15.00	15.00	3440	1.135
525HSO(X)	5/8 x 0.314	15.875 x 7.98	10.14	11.63	12.32	5.24	10.98	2.38	2.38	15.00	15.00	4085	1.300
530SO(X)	5/8 x 0.38	15.875 x 9.65	10.14	11.63	12.07	5.24	10.98	2.01	2.01	15.00	15.00	3440	1.312
530HSO(X)	5/8 x 0.38	15.875 x 9.65	10.14	12.33	13.22	5.24	10.98	2.38	2.38	15.00	15.00	4085	1.355



O-RING CHAIN

O-RING CHAIN



Chain No.	Pitch x Width		Roller	Pin					Links				Avg. Ulti. Tensile Strength	Approx Weight
	P x E			Ø R	C	B1	B2	Ø D	Ø D1	T1	T2	F1		
	inch	mm	mm	mm	mm	mm	mm	mm	mm	mm	mm	mm	kgf	kg/m
40 O-R	1/2 x 5/16	12.70 x 7.92	7.92	9.08	10.47	-	3.98	9.11	1.49	1.49	10.41	12.06	1880	0.204
50 O-R	5/8 x 3/8	15.875 x 9.52	10.16	11.63	12.07	-	5.09	10.98	2.01	2.01	13.01	15.08	2900	1.076
60 O-R	3/4 x 1/2	19.05 x 12.70	11.91	13.88	14.87	-	5.96	11.96	2.38	2.38	15.64	18.09	5100	1.611
80 O-R	1 x 5/8	25.4 x 15.88	15.87	17.55	19.45	-	7.94	15.05	3.18	3.18	20.82	24.13	7955	2.762
80H O-R	1 x 5/8	25.4 x 15.88	15.87	19.25	20.55	-	7.94	15.05	3.99	3.99	20.82	24.13	9400	3.150
100 O-R	1 1/4 x 3/4	31.75 x 19.05	19.05	21.40	-	26.30	9.54	18.38	3.99	3.99	26.03	30.16	13380	4.110

