

DETAIL SPECIFICATION OF GOODS LIFT & CAR LIFT

NO. Item Brand Properties

1. **YASKAWA JAPAN**'s Speed Control System is Micro Processor that is a standard device correctly manufactured and strictly inspected by Japan's standard. It is available with a manual on adjustment and maintenance plus with warranty. Consequently, it can be operated efficiently with high delicacy and 40% power saving.
2. **MITSUBISHI JAPAN** Operational Control System is Micro Processor System that can be operated correctly and precisely with long useful life and SOFTWARE system plus with BOARD I/O that is convenient for maintenance or spare parts replacement.

CONTROL BOX

System: full collective selective

TYPE MICROPROCESSOR CONTROL WITH
INVERTOR VVVF CONTROL SPEED



Microprocessor Type : PLC
(Programmable Logic Control)



PLC MITSUBISHI JAPAN

Control Speed: INVERTOR CONTROL
FOR ELEVATOR YASKAWA JAPAN

It is available with a Lift Instruction Manual and complete Electrical Wiring Plan.

3. **MITSUBISHI's** Elevator Door Mechanism Set is the latest developed elevator door drive system for saving energy with durable system because it would be the weakness point of elevator. If it can be solved, lift system will be operated smoothly without any disturbing noise while enabling lift's door to be opened in the form of 4 panel center opening telescopic and 6 panel center opening telescopic.



DOOR OPERATOR 4 CO CENTER OPNING MECHANISM



HEADER DOOR 4 CO CENTER OPNING MECHANISM



DOOR PANEL 4 CO CENTER OPNING STAINLESS TYPE



HIGHLIGHT LIFT SERVICE CO.,LTD.

บริษัท ไฮไลท์ ลิฟท์ เซอร์วิส จำกัด

9/105 Moo 6 Nawamin Road,
Klongkum, Bangkok, Bangkok 10240
Tel. 0-2733-5020, 0-2979-1173, 0-2733-4601
Fax. 0-2733-4601



DOOR OPERATOR 2SL SIDING OPENING MECHANISM



HEADER DOOR 2SL SIDING OPENING MECHANISM



DOOR: STAINLESS

DOOR PANEL 2SL SIDING OPENING



HIGHLIGHT LIFT SERVICE CO.,LTD.

บริษัท ไฮไลต์ ลิฟท์ เซอร์วิส จำกัด

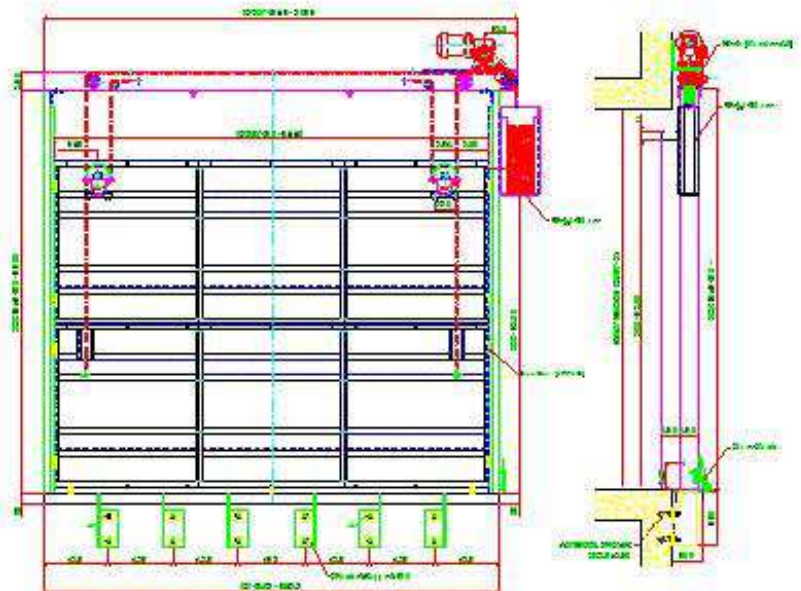
9/195 Moo 6 Nawamin Road,
Klongkum, Bungkum, Bangkok 10240
Tel. 0-2733-5020, 0-2379-1173, 0-2733-4601
Fax. 0-2733-4601



DOOR OPERATOR 6 CO & HEADER ENTRANCE FLOOR



4. Special lift door set is developed for operational strength, durability, and safety with horizontal sliding up 2 or 4 doors that be adjusted upon the height of the building. This door system utilizes the space of side area less than side opening lift door.



2 U Aotomatic Slide Up
Steel sheet zinc & Spraypaint

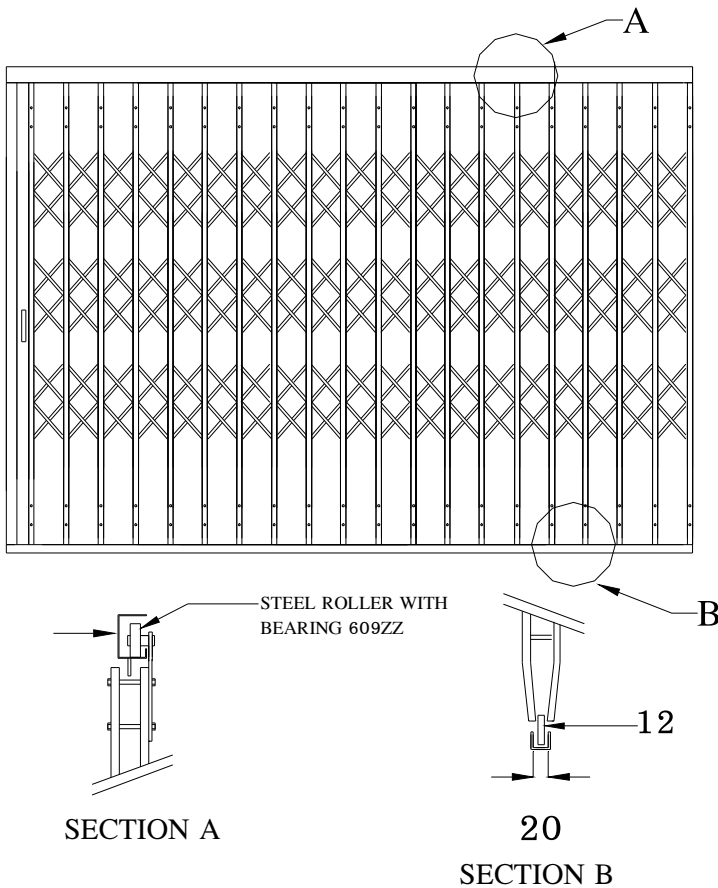
Drawing 2 U Aotomatic Slide Up



2 U Aotomatic Slide Up
Stainless Hair line Finish

4U Aotomatic Slide Up
Stainless Hair line Finish

5. Expanded door (collapsible) set is designed for frequent opening with 20 mm lower guide rail because it is convenient for pushing barrow in and out with durability and safety. Door Lock set is installed at all lift doors to prevent door opening while there is no lift parking on that floor.



Expanded Door (collapsible)





HIGHLIGHT LIFT SERVICE CO.,LTD.
บริษัท ไฮไลต์ ลิฟท์ เซอร์วิส จำกัด

9/105 Moo 8 Nawamin Road,
Klongkum, Bungkum, Bangkok 10240
Tel. 0-2733-5020, 0-2379-1173, 0-2733-4601
Fax. 0-2733-4601

6. Car Lift Set is manufactured by standard manufacturers and selection of only quality materials for security and durability of lifts plus with wood, steel, and superlene bumper.



Car body

Car Lift Set with zinc coated steel wall and steel floor painted with
Epoxy color for preventing slippery



HIGHLIGHT LIFT SERVICE CO.,LTD.

บริษัท ไฮไลท์ ลิฟท์ เซอร์วิส จำกัด

9/105 Moo 8 Nawamin Road,
Klongkum, Bungkum, Bangkok 10240
Tel. 0-2733-5020, 0-2379-1173, 0-2733-4601
Fax. 0-2733-4601



BMW Rama IV



Bangkok cold



Soken Chemical

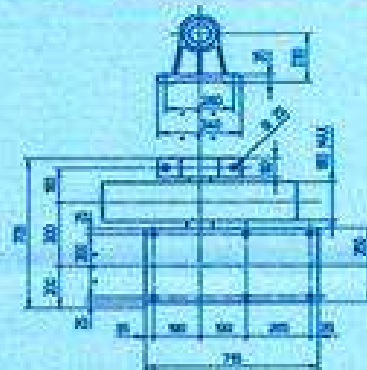
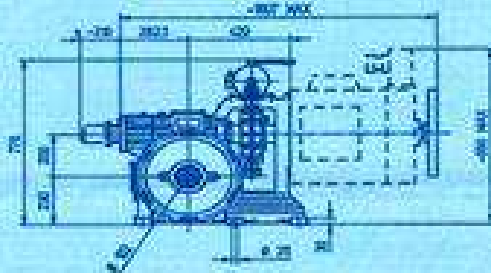
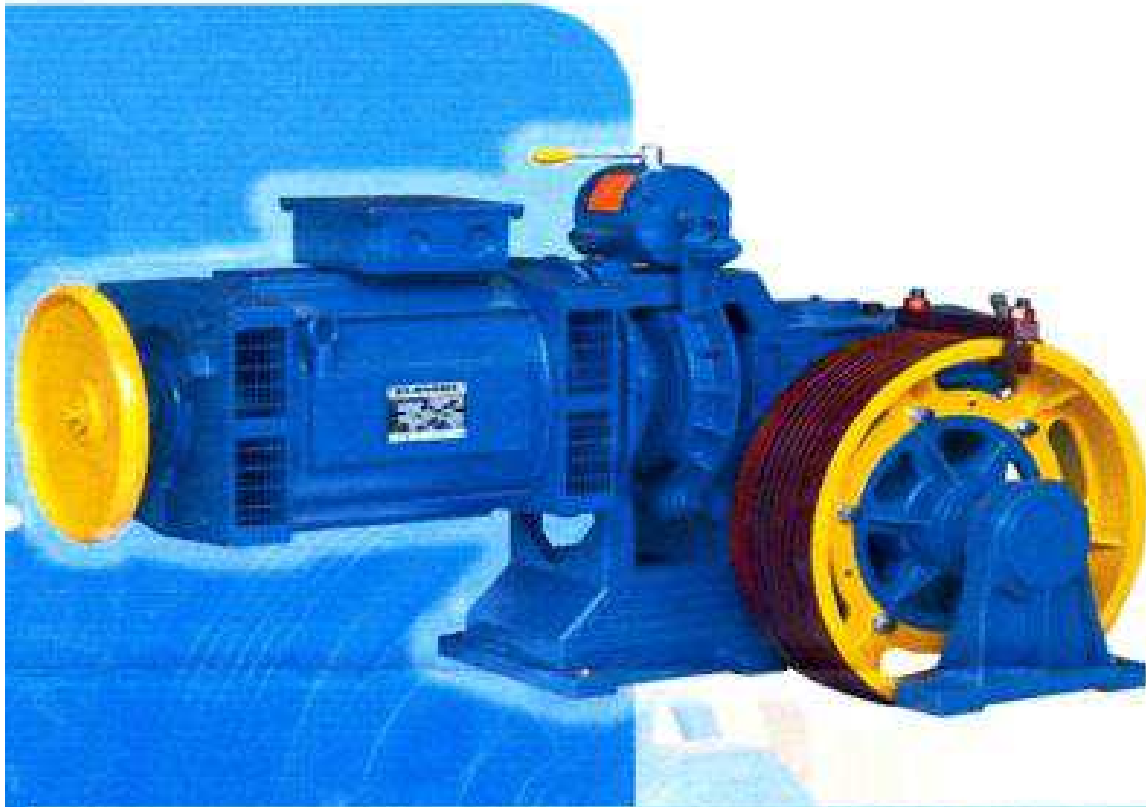


Eight Tonglor

Steel floor painted with non-slip Epoxy color or stainless

7. Lift Machine Set is the product consisted of imported motor gear and brake sets that are famous due to their durability and long useful life over 15 years.

PRODUCT BRAND: MONTANARI ITALY



* encoder o dinamo tachimetica – tachy or encoder – dinamo or encodeur – Tacho oder Impulsgeber



CERTIFICATO

Nr 50 100 2429 - Rev. 05

Si attesta che / This is to certify that

IL SISTEMA QUALITÀ DI
THE QUALITY SYSTEM OF

MONTANARI GIULIO & C. S.r.l.

SEDE LEGALE E OPERATIVA:

VIA BULGARIA 39
I-41122 MODENA (MO)

MAGAZZINO:
VIA OLANDA 37
I-41122 MODENA (MO)

È CONFORME AI REQUISITI DELLA NORMA
HAS BEEN FOUND TO COMPLY WITH THE REQUIREMENTS OF

UNI EN ISO 9001:2008

Questo certificato è valido per il seguente campo di applicazione
This certificate is valid for the following product or service range

**Progettazione, fabbricazione ed assistenza di argani, blocchi
paracadute, limitatori di velocità, gearless e componenti per ascensori**
(EA 18, 19)


Design, manufacture and after sales service of gear units, safety gears, overspeed governors, gearless and other standard ancillary lift components (EA 18, 19)



SGQ N° 048A	SSI N° 005G	PRD N° 0810
SGAN° 018D	ITX N° 001L	ISP N° 057E
SCB N° 008E		

Member degli Accordi di Mutuo Riconoscimento
EA, IAF e ILAC
Signatory of EA, IAF and ILAC Mutual Recognition
Agreements

Per l'Organismo di Certificazione
For the Certification Body
TÜV Italia S.r.l.


Andrea Vivi
Amministratore Delegato - CEO

Data di emissione / Issue date

2012-02-27

Data di scadenza / Expiry date

2015-01-28

Organizzazione certificata per la prima volta in data 2003-02-25

La validità del presente certificato è subordinata a sorveglianza periodica a 12 mesi e al riesame completo del sistema di gestione aziendale con periodicità triennale

"The validity of the present certificate depends on the annual surveillance every 12 months and on the complete review of company's management system after three-years"

8. Electric Hoist Lift Machine



MITSUBISHI ELECTRIC HOISTS

S Type Series

Strong type **High speed type** **1/2t~60t**





mitsubishi ELECTRIC HOISTS

S type offers the best lifting speed, power and durability in this class.

Specifications																						
Type	Lifting Capacity(t)	Loadlifting height(m)		Wire rope		Hoisting				Travelling												
				2falls(stationary)	4falls(Double-rail Low-headroom)	Rope specification	Speed (m/min)		Motor		Mono-rail Low-headroom			Double-rail								
											Speed (m/min)		Motor		Speed (m/min)		Motor					
		Low	High				50 Hz	60 Hz	50 Hz	60 Hz	Poles	50 Hz	60 Hz	50 Hz	60 Hz	Poles	50 Hz	60 Hz	50 Hz	60 Hz	Poles	
S	1/2	6	12	φ 6.3	φ 4	6×W(19)B class JIS G 3525	11	13	1.0	1.2	21	25	0.22	0.26	4	—	—	—	—	4		
	1	6	12	φ 8	φ 6.3				2.0	2.4			—	—								
	2	6	12	φ 10	φ 8		8.4	10	2.9	3.5			—	—								
	2.8	6	12	φ 12.5	φ 9				4.1	4.9			21	25		0.5	0.6					
	3	6	12	φ 12.5	φ 9				4.4	5.3						0.5	0.6					
	5	8	12	—	φ 11.2	6×Fi(29) B class JIS G 3525	6.7	8	6.2	7.5	12	15	0.85	1.0	15	18	0.5	0.6				
	7.5	8	12	—	φ 14		5.8	7	8.3	10			0.85	1.0								
	10	8	12	—	φ 16		5	6	10	12			1.5	1.8			0.85	1.0				
	15	8	12	—	φ 20				17	20			0.85 × 2	1.0 × 2								
	20	—	12	—	φ 22.4								1.5 × 2	1.8 × 2								
	30	—	12	—	φ 25	IWRC 6×Fi(29) B class JISG3525	2.8	3.3	2.1	2.5	—	—	—	—	1.5 × 2	1.8 × 2						
	40	6.5	—	—	φ 22.4 (falls) # 1	6×Fi(29) B class JISG3525	2.1	2.5							0.85 × 4	1.0 × 4						
	—	—	11.5	—	φ 25 (falls) # 1	IWRC 6×Fi(29) B class JISG3525																
	—	—	12.5	—	φ 25 (falls) # 1	IWRC 6×Fi(29) B class JISG3525									1.8	2.2						
	45	—	19	—	φ 25 (falls) # 1	IWRC 6×Fi(29) B class JISG3525																

※ 1 40t has 8falls and 45t has 6falls.(Regarding 60t, please specially)

Standard Specifications

- **Power supply**.....3-phase 200V 50/60Hz(220V 60Hz is available.)
- **Operating method**.....Push button switch operations
For Suspended and Frame mounted type(Not exceeding 3t): 2points(U and D)
For Suspended and Frame mounted type(More than 5t): 4points(On, Off, U and D)
For Regular type(Not exceeding 3t): 6points(U, D, E, W, S and N)
For Regular type(More than 5t): 8points(On, Off, U, D, E, W, S and N)
- **Rating**.....30 min.(JIS C 9620)
- **Power supply system**..... Both trolley feeding and cable feeding are available. However, neither trolley nor cable is attached.
- **Enclosure**.....Conforming to JIS C 4004 drip-proof type(simplified outdoor type)
- **Applicable standard**.....JIS C 9620 electric hoist/crane structure standard
- **Color coating**.....Main body : Metallic gray(Equivalent to Munsell N4.0)
Hook block : Munsell 7.5YR7/14
Pushbutton : Equivalent to Munsell 7.5YR7/13
- **Ambient air temperature**.....-5°C(23°F) to 40°C (104°F) (Non congelation)
- **Ambient air humidity**.....90% or less(Non condensing)



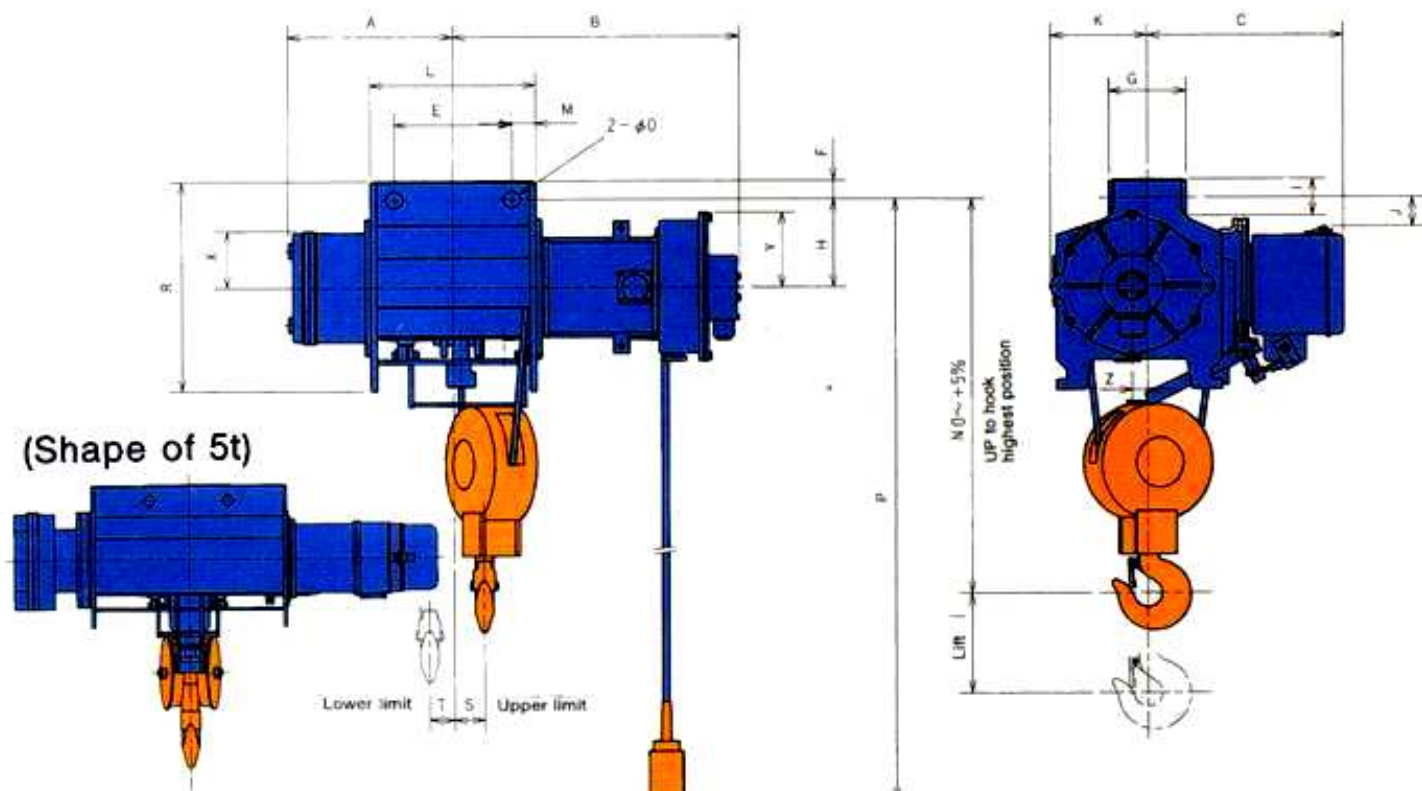
บริษัท ไฮลิทลิฟท์เซอร์วิส จำกัด โทร 02-7335020

MITSUBISHI ELECTRIC HOISTS

Suspended Type

S

(1/2t·1t·2t·2.8t·3t·5t)



Model		S-1/2		S-1		S-2		S-2.8(3)		S-5	
		LK2	HK2	LK2	HK2	LK2	HK2	LK3	HK3	LK2	HK2
Cap.(t)		1/2		1		2		2.8(3)		5	
Lift(m)		6	12	6	12	6	12	6	12	8	12
Dimensions(mm)	A	287	457	287	474	322	479	341	510	646	771
	B	433	473	518	551	563	593	610	641	920	1045
	C	324		345		383		408		410	
	E	170	230	230	230	230	230	230	230	290	
	F	28	33	33		38		43		60	61
	G	140	117	117		151		176		229	
	H	155		160		177		215		225	
	I	75	78	63		67		80		105	106
	J	18		47		59		127		145	
	K	151		167		190		216		226	
	L	283	493	298	518	323	508	323	523	725	975
	M	32	42	34	67	47	75	46	77	217	342
	N	570		670		800		965		905	
	O	20	24	24		33		33		38	
	P	6000	12000	6000	12000	6000	12000	6000	12000	8000	12000
	R	328	333	373		425		518		546	
	S	50	93	71	105	58	101	60	97	—	
	T	58	123	42	119	49	113	47	115	—	
	X	87		107		140		172		200	
	Y	85		105		150		150		143	
	Z	20		36		30		30		30	
Weight(kg)		90	105	135	150	220	245	310	345	510	580
Hook block weight(kg)		4.5		7.5		15		27		42	

9. SEMI TOUCH Button Set with LED SHOW, long useful life, and durability against corrosion that is manufactured under JAPAN's standards.

10. Attractive, durable, and modern DOT MATRIX or DIGITAL Display Light.

PUSH BUTTON BOX STAINLESS



รูปตัวอย่างแผงปุ่มกด

11. **TOKYO ROPE JAPAN** is the specific rope for lift that is manufactured under JIS G3525 Standard.

WIRE DEPT.

TOKYO ROPE
Lloyd's Register
TOKYO ROPE MFG. CO., LTD.
ESTABLISHED 1911
3-14 NISHINAKA 2-CHOME, NISHIKI-KU
TOKYO, JAPAN

Tsukuba Works, Ibaraki
Osaka Works, Osaka

No. 6603
7173021

Date: APR. 11, 1991

Certificate of Inspection for Steel Wire Rope.
To Messrs. ACE CORPORATION CO., LTD.

We hereby certify:—That we have duly inspected the following
commodities according to JIS G3525 Grade A

Name of Manufacture: Tsukuba Works
Galvanized or not: Ungalvanized
Construction: RVA 818 (18)
Lay: Right Hand Ordinary Lay
Preformed or not: Preformed
Diameter: 12.00 MM (ACTUAL 12.00 MM)
Length: 1500.00 M
Number of Reel or Coil: 1
Total Mass of the Rope: 755.0 kg
Actual Breaking Load: 70.00 (kN)
(Minimum Breaking Load) 60.20 (kN)
Mechanical Tests of Individual Wire: Good
Product Number: H0556-03
Note: Prestensioned

J. Kagoyama
Manager of Quality Section
T. KAGOYAMA

12. ARD or UPS **BATTERY ARD** is the device helping to prevent the event that the lift stops between floors during power failure and the power of this case is supplied by dried battery (OPTION)





HIGHLIGHT LIFT SERVICE CO.,LTD.
บริษัท ไฮไลท์ ลิฟท์ เซอร์วิส จำกัด

9/105 Moo 6 Nawamin Road,
Klongkum, Bungkum, Bangkok 10240
Tel. 0-2733-5020, 0-2379-1173, 0-2733-4601
Fax. 0-2733-4601

Highlight Lift Service Company Limited

1. Highlight Lift Service Company Limited is a legally registered company operating a complete business on lifts including lift manufacturing, installation, maintenance, and 24 hour services.
2. Most clients of Highlight Lift Company Limited are reliable public companies, limited companies, partnership, stores, large manufacturers as shown in the List of Clients attached herein.
3. We provide some technicians who can provide services rapidly with intention to provide good and beneficial services to all clients under the correct Lift Standard based on ANSI (AMERICAN NATIONAL STANDARD INSTITUTE)
4. Address: 9/105 Village No. 6, Jitpakdee Alley, Nawamint Road, Khlong Kum Sub-District, Bueng Khum District, Bangkok 10240, Tel. 0-2733-5020, 0-2379-1173, 0-2733-5818, Fax. 0-2733-4601
5. ISO 9001 Factory Suranari Industrial Estate, Nakhon Ratchasima
6. On-line Contact: www.highlightlift.com,
e-mail: highlightlift@hotmail.com