

LXSG-15E~50E

ROTARY VANE WHEEL DRY-DIAL MAGNET-DRIVE COLD WATER METER

LXSGR-15E~50E

ROTARY VANE WHEEL DRY-DIAL MAGNET-DRIVE HOT WATER METER



This range of water meter is used to measure the total quantity of cold potable water which consumed in household or a resident unit, passing through the pipeline.

Esta serie de medidores de agua esta disenada para la medicion del consumo de agua fria pasada por la tuberia de agua potable en una casa o un departamento.

Compliance with standard: GB/T 778-2018
ISO 4064:2014



Feature:

- Dry-dial, Magnetic drive, Resistance to exterior magnet interference
- Multi-jet
- Selected high quality materials for steady & reliable characteristic
- Vacuum sealed register ensures the dial kept free from fog and keep the reading clear in a long term service
- Accurate measurement, durable in use
- Rotating shroud for easier reading
- Universal use. Easy for interchange & maintenance

MAIN TECHNICAL PARAMETER *Especificaciones técnicas*

口径 Meter Size DN mm	测量范围 Q_3/Q_1	过载流量 Q_4 Overload Flowrate	常用流量 Q_3 Permanent Flowrate	分界流量 Q_2 Transitional Flowrate	最小流量 Q_1 Min Flowrate	始动流量 Starting Flowrate	最小读数 Min Reading <i>Lectura</i>	最大读数 Max. Reading <i>Lectura</i>
		m ³ /h			l/h			m ³
15	80	3.125	2.5	50	31.25	14	0.00005	99999
	100			40	25			
	125			32	20			
	160			25	15.625	12		
20	80	5	4	80	50	18	0.00005	99999
	100			64	40	16		
	125			51.2	32			
	160			40	25			
25	80	7.875	6.3	126	78.78	19	0.00005	99999
	100			100.8	63			
	125			80.64	50.4			
	160			63	39.375			
32	80	12.5	10	200	125	25	0.00005	99999
	100			160	100	23		
	125			128	80			
	160			100	62.5			
40	80	20	16	320	200	56	0.00005	99999
	100			256	160			
	125			204.8	128			
	160			160	100			
50	80	31.25	25	500	312.5	70	0.00005	99999
	100			400	250			
	125			320	200			
	160			250	156.25			

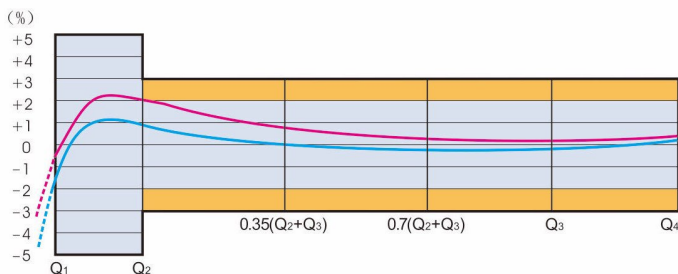
INDICATING ERROR

At low zone is $\pm 5\%$ from minimum flow rate (Q_1) to transitional flow rate (Q_2) exclusive boundary

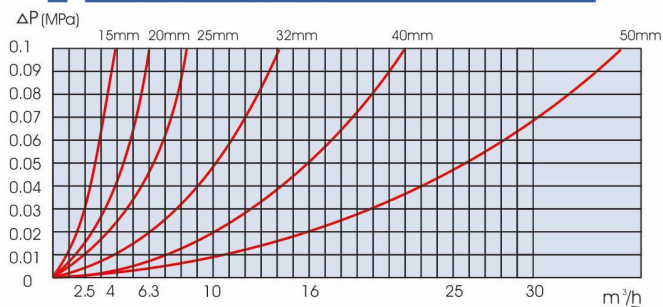
At high zone is $\pm 2\%$ (cold water) from transitional flow rate (Q_2) to overload flow rate (Q_4)

At high zone is $\pm 3\%$ (hot water) from transitional flow rate (Q_2) to overload flow rate (Q_4)

FLOW-ERROR CURVE

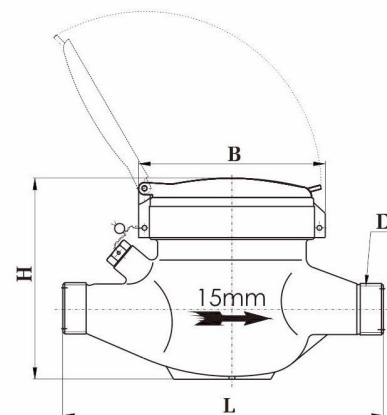


PRESSURE LOSS CURVE



DIMENSION AND WEIGHT

公称口径 Meter Size Dia DN (mm)	长 L Length	宽 B Width	高 H Height	连接螺纹 Connecting Thread D	重量 Weight kg
15	165/190	99	110	G 3/4	1.5/1.6
20	190/195	99	110	G 1	1.7/1.8
25	260/225	104	120	G 1 1/4	2.6/2.4
32	260/230	104	120	G 1 1/2	2.8/2.7
40	300/245	125	155	G 2	5.4/4.5
50	300	125	155	G 2 1/2	7.2
	280	165	175	FLANGE CONNECTING CONFORM TO GB/T17241.2-1998 D=165 D1=125	14



Working Condition:

Maximum admissible temperature: 40°C (cold)

Water pressure class: MAP 10 90°C (hot)

Pressure loss class: ΔP 63