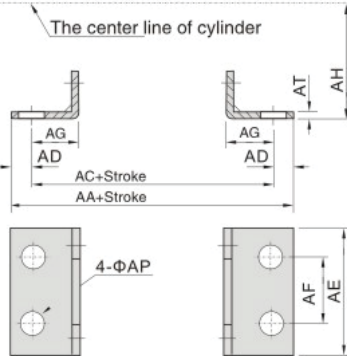


Dimension of Mounting Accessories

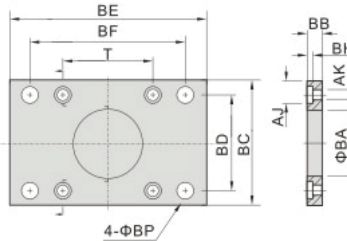
Dimension of TLB type

Bore/Sign	32	40	50	63	80	100
AA	153	169	173	184	199	209
AC	134	140	149	158	167	173
AD	9.5	14.5	12	13	16	18
AE	50	57	68	80	97	112
AF	33	36	47	56	70	84
AG	20.5	23.5	28	31	30	30
AH	28	30	36.5	41	49	57
AP	9	12	12	12	14	14
AT	3	3	3	3	4	4



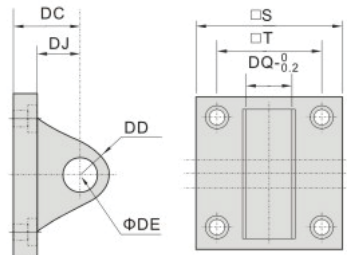
Dimension of TFA/TFB type

Bore/Sign	32	40	50	63	80	100
BA	28.3	32.3	38.3	38.3	47.3	47.3
BB	10	10	10	12	16	16
BC	47	52	65	76	95	115
BD	33	36	47	56	70	84
BE	72	84	104	116	143	162
BF	58	70	86	98	119	138
BH	6.5	6.5	6.5	8.5	10.5	10.5
AJ	10.5	10.5	10.5	13.5	16.5	16.5
AK	6.5	6.5	6.5	8.5	10.5	10.5
BP	7	7	9	9	11	11
T	33	37	47	56	70	84



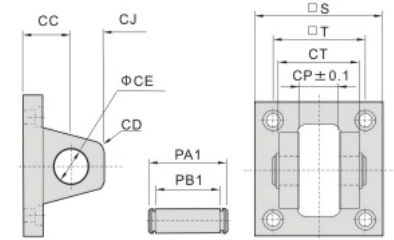
Dimension of TCA type

Bore/Sign	32	40	50	63	80	100
S	48	50	62	75	94	112
T	33	37	47	56	70	84
DC	34	34	34	34	48	48
DD	14	14	15	15	20	20
DE	12	14	14	14	20	20
DJ	14	14	15	15	20	20
DQ	16	20	20	20	32	32



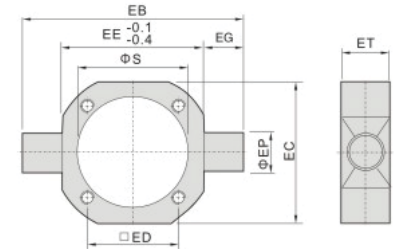
Dimension of TCB type

Bore/Sign	32	40	50	63	80	100
CC	19	19	19	19	32	32
CD	5	5	3	3	8	8
CE	12	14	14	14	20	20
CJ	13	13	15	15	21	21
CP	16.3	20.3	20.3	20.3	32.3	32.3
CT	32	44	52	52	64	64
PA1	41	51.8	60.3	60.3	73.8	73.8
PB1	33.5	45.5	54	54	65.5	65.5
S	48	50	62	75	94	112
T	33	37	47	56	70	84



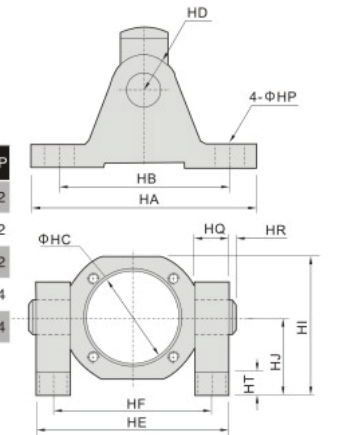
Dimension of TTC type

Bore/Sign	EB	EC	ED	EE	EG	EP	ET	S
40	113	63	37	63	25	25	30	45.5
50	126	76	47	76	25	25	30	55.5
63	138	88	56	88	25	25	30	68.5
80	164	114	70	114	25	25	35	87.5
100	182	132	84	132	25	25	40	107.5



Dimension of TTC-M type

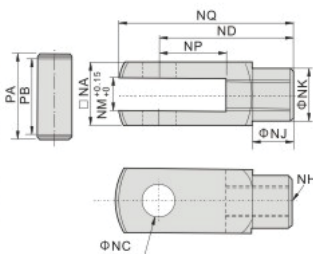
Bore/Sign	HA	HB	HC	HD	HE	HF	HI	HJ	HQ	HR	HT	HP
40	110	80	45.5	22	109	86	81.5	50	23	2	12	12
50	110	80	55.5	22	122	99	88	50	23	2	12	12
63	110	80	68.5	22	134	111	94	50	23	2	12	12
80	120	85	87.5	22	160	137	127	70	23	2	14	14
100	120	85	107.5	22	178	155	136	70	23	2	14	14





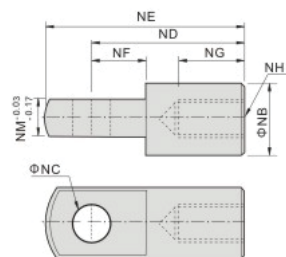
Dimension of Y rod end Fitting

Bore/Sign	NA	NC	ND	NH	NJ	NK	NM	NP	NQ	PA	PB
32	19	10	40	M10x1.25	12	18	10	20	52	26.2	20
40	25.4	12	48	M12x1.25	20	23	12	24	62	32.8	26.5
50	32	16	64	M16x1.5	22	30	16	32	83	39.3	33
63	32	16	64	M16x1.5	22	30	16	32	83	39.3	33
80	44.4	20	80	M20x1.5	30	39	20	40	105	53.3	45
100	44.4	20	80	M20x1.5	30	39	20	40	105	53.3	45



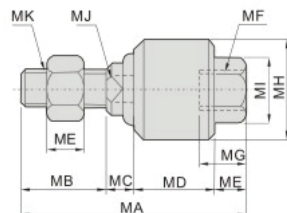
Dimension of I rod end Fitting

Bore/Sign	NB	NC	ND	NE	NF	NG	NH	NM
32	20	10	40	52	15	20	M10x1.25	10
40	24	12	48	67	24	20	M12x1.25	12
50	32	16	64	89	32	23	M16x1.5	16
63	32	16	64	89	32	23	M16x1.5	16
80	40	20	80	112	40	30	M20x1.5	20
100	40	20	80	112	40	30	M20x1.5	20



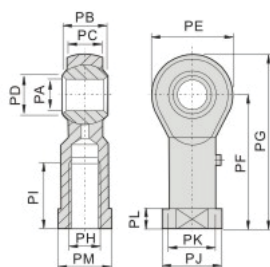
Dimension of Floating Fitting

Bore/Sign	MA	MB	MC	MD	ME	MF	MG	MH	MJ	MK	MI
32	58	22	7	21	8	M10x1.25	12	26	10	M10x1.25	17
40	58	22	8	21	7	M12x1.25	12	28	12	M12x1.25	19
50	90	27	10	41	12	M16x1.5	14	45	15	M16x1.5	27
63	90	27	10	41	12	M16x1.5	14	45	15	M16x1.5	27
80	102	29	13	46	14	M20x1.5	18	53	22	M20x1.5	33
100	102	29	13	46	14	M20x1.5	18	53	22	M20x1.5	33

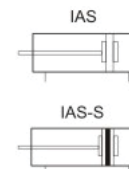


Dimension of Bearing Fitting

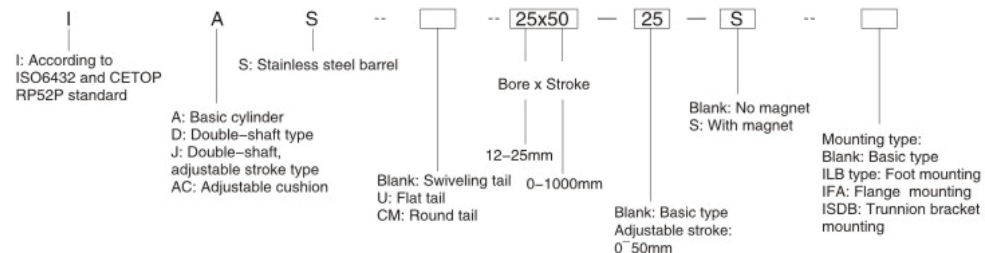
Bore/Sign	PA	PB	PC	PD	PE	PF	PG	PH	PI	PJ	PK	PL	PM
32	10	14	11	12.9	26	43	56	M10x1.25	21	19	15	6.5	17
40	12	16	12	15.4	30	50	65	M12x1.25	24	22	17.5	6.5	19
50	16	21	15	19.3	38	64	83	M16x1.5	33	27	22	8	22
63	16	21	15	19.3	38	64	83	M16x1.5	33	27	22	8	22
80	20	25	18	24.3	46	77	100	M20x1.5	40	34	27.5	10	32
100	20	25	18	24.3	46	77	100	M20x1.5	40	34	27.5	10	32



IAS 20 x 25



How to Order?



- * I Series cylinder stainless steel barrel, basic type, 12mm bore, 50mm stroke, model: IAS 12X50
- * I Series cylinder stainless steel barrel, adjustable cushion, 25mm bore, 70mm stroke, with magnet, model: IACS 25X70-S

Product Features

- * Aluminum cover and stainless steel barrel.
- * 12mm-25mm are according to ISO6432 and CETOP RP52P standard, 32mm-40mm are E.MC standard.
- * 16mm-25mm are with adjustable cushion, other size cushion is optional
- * I series mini cylinder can be easily changed to different appearance according to customers requirement
- * With self-lubricating bearing, the piston rod is lubrication free.
- * Magnet and sufficient fixing styles are available.