

MultiStar Ironer

The new benchmark for performance, quality and ergonomics

Kannegiesser®

PARTNER IN LAUNDRY TECHNOLOGY



BLUECOMPETENCE

Alliance Member

Partner of the Engineering Industry
Sustainability Initiative

MultiStar

The new benchmark for performance, quality and ergonomics

The MultiStar CM is a single roll ironer for high quality and performance. Its design is based on the latest developments in the field of ironing technology.

The MultiStar is available with 600 mm and 800 mm roll diameter and can be heated with steam, gas or electricity.

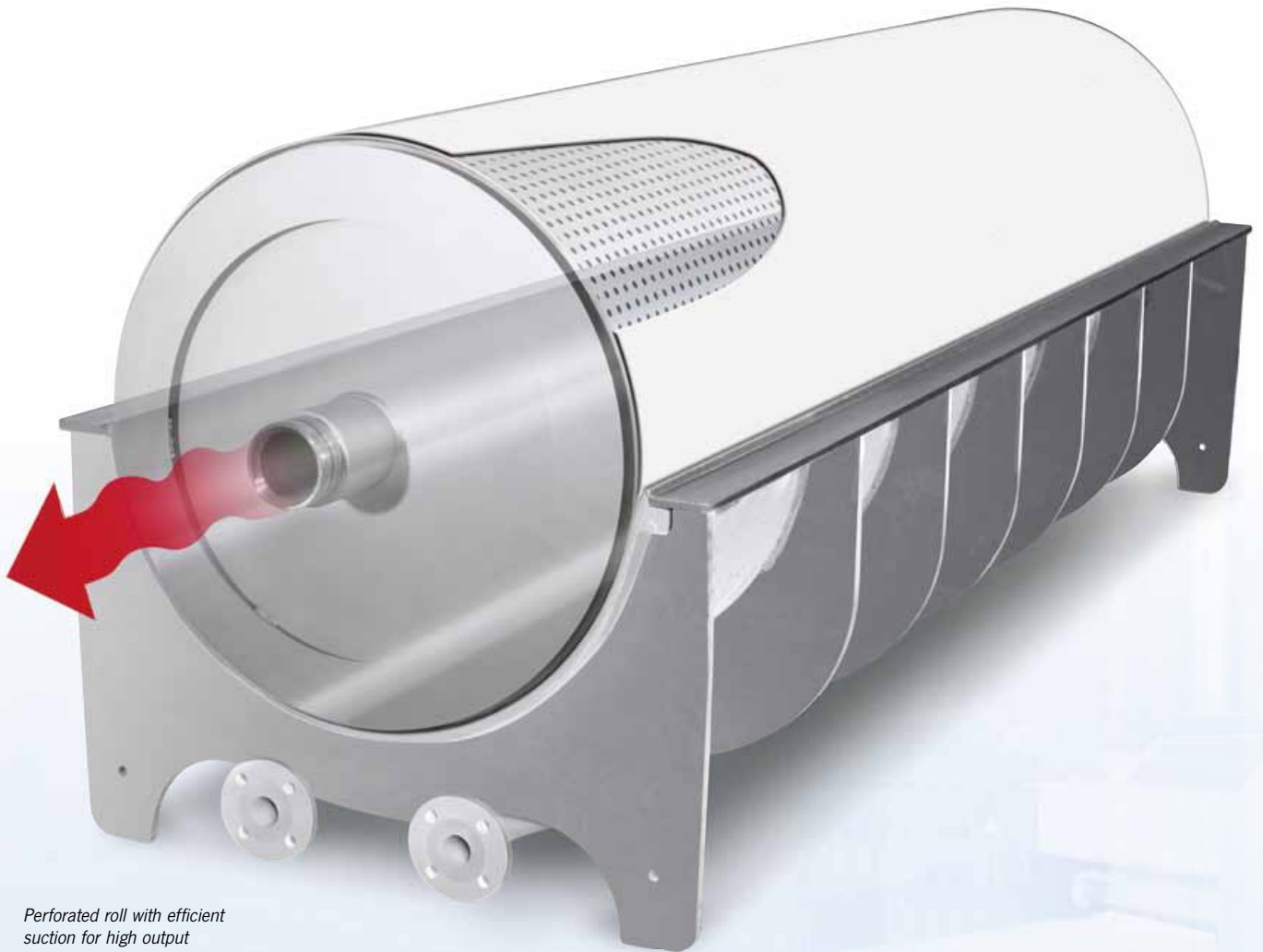
The variety of innovative product features makes the CM MultiStar the new benchmark when it comes to performance, quality and ergonomics – and that's what you need to run a highly efficient flatwork process.



Applications

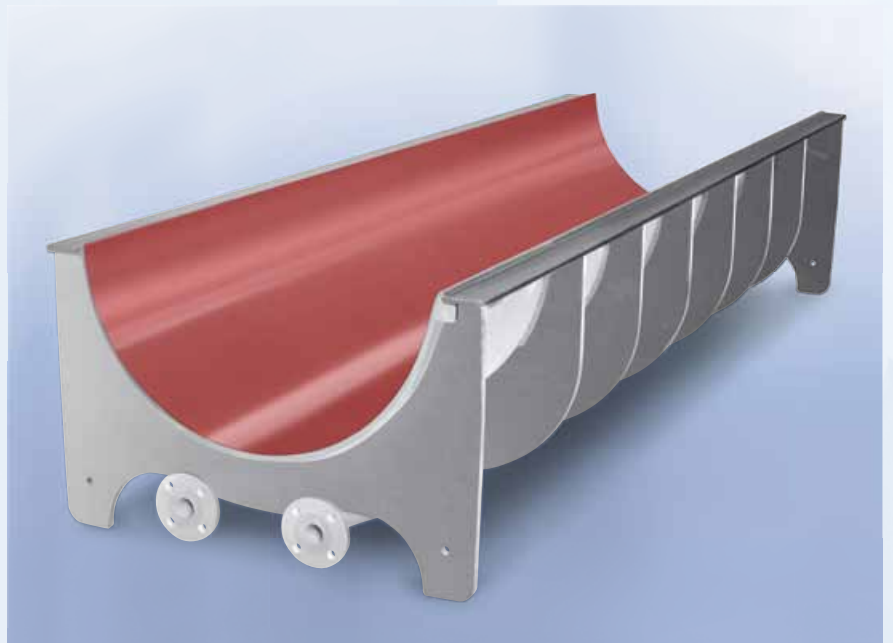
- Hotels and restaurants
- Medical centers / hospital applications
- Professional laundries (small/medium sized)
- Small nursing houses

High Performance



Perforated roll with efficient suction for high output

The decisive factor for the ironing process is the interaction of chest and roll. The smoothly polished chest surface leads to excellent finishing quality of the textile. The even heat distribution in the whole chest combined with the strong vacuum in the roll results in high evaporation capacity.



High performance due to consistent energy supply and even heat distribution.

Excellent Quality

High ironing pressure

High ironing speeds for processing a wide variety of textiles like bed linen, heavy cotton table linen as well as light articles can be achieved by utilization of even and high roll pressure.

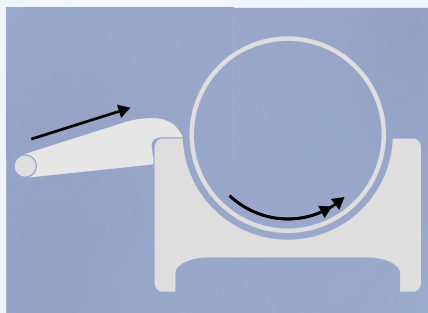
This in combination with the extremely smooth chest surface leads to superior quality.



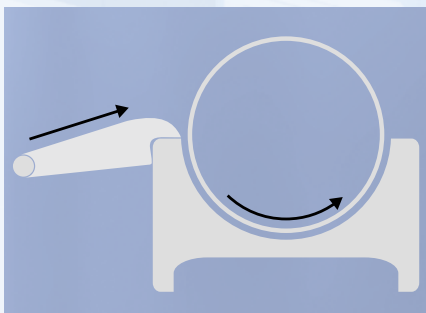
Polished chest for high quality finish

Speed control 'Plus'

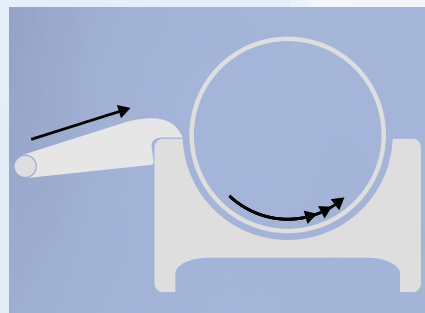
Speed difference between infeed table and ironer roll adjustable for different types of linen. Wrinkles will be eliminated.



Slightly higher roll speed for smoothing



Same roll speed for sensitive articles (e.g. for round table cloth)



Higher roll speed for stretching effect (e.g. for heavy bed linen)

Optimized Ergonomics



Ergonomic feeding design with Feeding table 'Plus'

- Optimized feeding table design for continuous and safe feeding of articles
- Most ergonomic feeding height and angle
- Strong vacuum for holding items and highest quality



Return to operator feeding

- 'Against-the-wall' 1-person operation for reduced space and increased flexibility



Linen through for ergonomic feeding
Linen located directly in front of feeding table



Finger protection
Finger protection for safe work environment

MultiStar

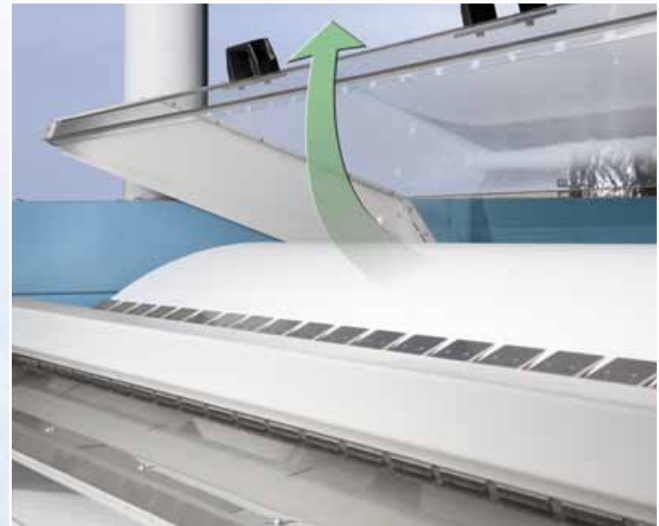
Easy to operate

- Most modern touchscreen panel
- Intuitive menu (navigation) structure for easy handling
- Simple program selection (save up to 199 programs)
- Multilingual menu to shift between many different display languages
- Automatic maintenance pop-up's (e.g. waxing) to ensure focus on feeding as well as long lifetime of the ironer
- Start signal after ironer is ready for production (heated-up) to reduce idle times



Transparent 'ISO Concept Cover'

- Transparency for inspection of roll
- Insulation for energy saving and minimized heat radiation



Transparent 'ISO Concept Cover'

Easy to open

Technical data

Roll diameter	Heating-type	Electric connection		Weight kg	Working width mm	Temperature / Steampressure- range °C / bar	Speed Standard (increased) m/min
		Power supply V / Hz	Power kW				
600	Gas	400 V 50/60 Hz	6,1 – 6,9	2420 – 3170	2100 – 3500	130 – 180 °C	2-10 (3-12)
600	Electric	400 V 50/60 Hz	65,9 – 66,8	2310 – 2950	2100 – 3500	130 – 180 °C	2-10 (3-12)
600	Steam	400 V 50/60 Hz	4,4 – 5,3	2420 – 3050	2500 – 3500	5 – 10 bar	2-10 (3-12)
800	Gas	400 V 50/60 Hz	6,9 – 7,9	3020 – 3730	2500 – 3500	130 – 180 °C	3-14 (4-16)
800	Electric	400 V 50/60 Hz	86,8 – 87,8	2910 – 3250	2500 – 3000	130 – 180 °C	3-14 (4-16)
800	Steam	400 V 50/60 Hz	5,3 – 6,3	3100 – 3900	2500 – 3500	5 – 10 bar	3-14 (4-16)

Subject to changes by development
Brochure shows optional equipment