

Desiccant Dehumidifier



บริษัท อมาต กรุ๊ป จำกัด

- Pharmaceutical Industry
- Confectionary Industry
- Electronic Industry
- Foods Industry
- Military Industry
- Others; clean room system, Film, Ice skating rink etc.

FEBRUARY 2,2020

Amata Group Company Limited
Authored by: Akkharin P.



About us

Edit Feb 2,2020

Our company has established in 2009. We have determined about dehumidification system and humidification system. Moreover, we have improved our quality continuously and competitive price. Not only do we solve a humidity problem, but also We have provide the customer with the best service to make a great customer satisfaction. Last but not least, we have global customers to export our dehumidifier as well.

In 2019, we launch the clean room system to expand a local market.

“Amata have sincere every advice with global standard service under IO 9001:2015”

Why do you choose us?

There are eight good points as follows;

1. Our goods is more durable than other competitor because we are sophisticated to choose the great quality parts.
2. We have a spare part of dehumidifier on available stock.
3. We have expert technicians to give you advices 24 hours.
4. Our business has been doing business for more 11 years.
5. We have ISO 9001:2015 “Design, Assembly of Dehumidifier, Humidifiers, Air Conditioning System and Spare Parts, and Maintenance Services”.
6. We provide a customer with a portable dehumidifier during repairing.
7. Our spare parts price is competitive.
8. When a dehumidifier has any problem, we can take charge of machine within 24 hours.

Organization

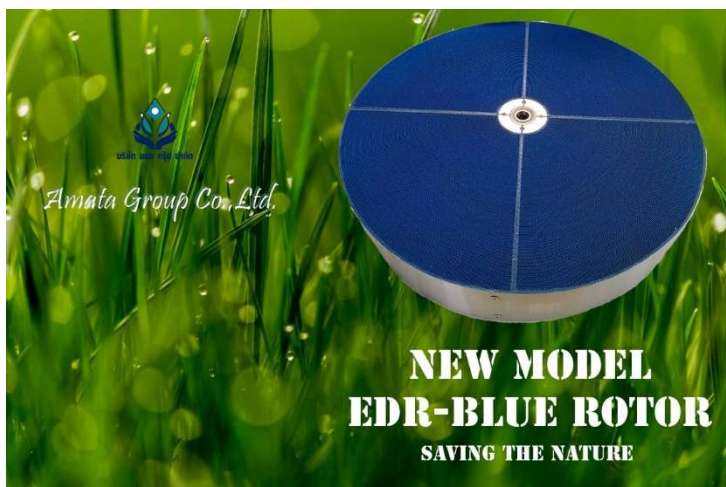
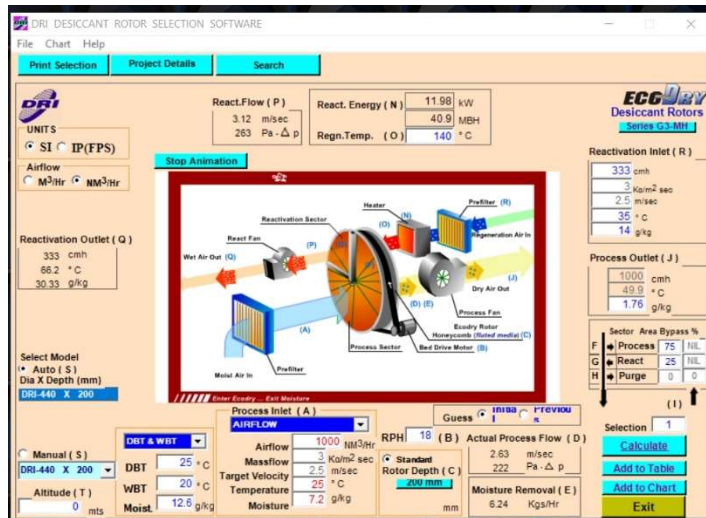


Amata Group Co.,Ltd
Address:55/91 Soi Sakaengam 30, Cannabises rd.,
Samaedam ,Bangkhunthian BKK 10150
TEL:+662-408-5446-9 FAX:+662-405-5450
www.estexpert.com/ Email:info@estexpert.com
ID Line:estexpert.com

Principal for Desiccant dehumidifier

Our desiccant rotor has five certificates as follows:

1. ROHS Certificate
2. UL 1995
3. CSA-C22.2
4. Flame spread _ test report
5. Hygine Test Certificate



Principle

Desiccant dehumidifier is responsible to drying at all conditions especially appropriate for low temperature ($< 30\text{ C}$), and low humidity ($< 60\% \text{ RH}$) operation.

Complete self-contained unit include a desiccant rotor, fans, air filters, electric heaters and controls. There are two parts. The rotor will absorb moisture and emit dry air outlet to the room, other will blow humid in rotor to outside air.

We have a software to choose the right rotor size. Our partner:



Our software to calculation moisture load.

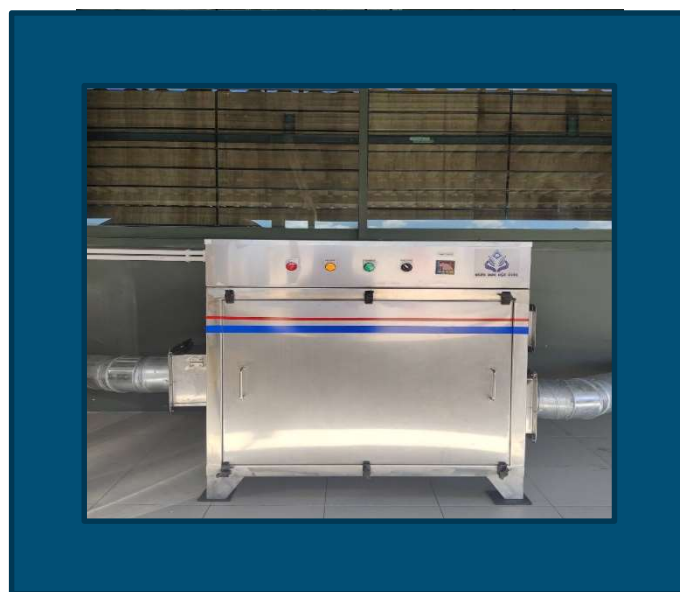
We have decided to invest a develop software more than EUR 3,000 so as to get the best software. Our software has a high precision to calculate moisture load so that we can select the dehumidifier size. Moreover we can customized a dehumidifier including Cooling Coils (Pre cooler + Post Cooler) under standard production from manufacture and “Camfil” Air Filters (Pre Filters +Medium Filters, HEPA Filters according to ISO 16890



Our Team Technicians



Specification EST 250-EST800



Description	EST-250	EST-450	EST-800
Dry Air flow (CMH)	250	450	800
Capacity (kgs/hr)@20C50%Rh	1.0	2.9	4.1
Wet Air Flow (CMH)	80	150	267
PTC Heater (Kw) *	2.6	3.9	7.8
ESP Dry Air (Pa)	250	250	250
Power supply	220-240V/1ph/50Hz	220-240V/1ph/50Hz	380-400V/3ph/50Hz
Max. Electric Power (Kw)/ Current (Amps)	2.8 Kw/8.65 Amp	4.23Kw/13.1 Amp	8.25 Kw/15 Amp
Casing (internal/External)	(Super Dyma/ PU1")	(Super Dyma/ PU1")	(Super Dyma/ PU1")
Aluminum Profile	Non TB/ TB	Non TB/TB	Non TB/TB
Dimension (WxLxH) mm	550x700x550	650x800x650	700x1000x900
Weight (Kgs)	50	65	90

*heater temp based on zero degree of Celsius

**Casing made from SS 304 (Option)

Remarks: Dimension and weight are estimation.

FAN Brand: ebm past/ Ziehl Abegg / Cam York

Electrics: Mitsubishi/ABB/Omron/Schnider.

All units have Humidity controller with sensor

Specification EST 1300-EST27000



Description	EST-1300	EST-2300	EST-3300	EST-3500	EST-4500	EST-5800
Dry Air flow (CMH)	1300	2300	3300	3500	4500	5800
Capacity (kgs/hr)@20C50%Rh	8.7	13.0	14.0	18.0	23.0	28.0
Wet Air Flow (CMH)	434	767	1100	1167	1500	1934
U Finned Heater (Kw) *	12	20	31.5	31.5	40.5	54
ESP Dry Air (Pa)	250	250	250	250	250	250
Power supply	400V/3ph/50Hz	400V/3ph/50Hz	400V/3ph/50Hz	400V/3ph/50Hz	400V/3ph/50Hz	400V/3ph/50Hz
Max. Electric Power (Kw)/ Current (Amps)	13Kw/24A	21.1Kw/38A	32.7Kw/59A	33.2Kw/60A	42.4Kw/76A	56.7Kw/102A
Casing (internal/External)	(Super Dyma/ PU1")	(Super Dyma/ PU1")	(Super Dyma/ PU1")	(Super Dyma/ PU1")	(Super Dyma/ PU1")	(Super Dyma/ PU1")
Aluminum Profile	Non TB/ TB	Non TB/ TB	Non TB/ TB	Non TB/ TB	Non TB/ TB	Non TB/ TB
Dimension (WxLxH) mm	1000x1500x1100	1100x1500x1100	1100x1500x1100	1100x1500x1100	1400x1800x1400	1400x1800x1500
Weight (Kgs)	160	180	240	250	340	360

*heater temp based on zero degree of Celsius

**Casing made from SS 304 (Option)

Remarks: Dimension and weight are estimation.

FAN Brand: Kruger fan/ ebm past/Ziehl Abegg /Ruck

Electrics: Mitsubishi/ABB/Omron/Schnider.

All units have Humidity controller with sensor

Specification EST 6000-EST27000



Description	EST-6000	EST-8000	EST-13000	EST-19000	EST-27000
Dry Air flow (CMH)	6000	8000	13000	19000	27000
Capacity (kgs/hr)@20C50%Rh	36	47.5	78	109	164
Wet Air Flow (CMH)	2000	2667	4334	6334	9000
U Finned Heater (Kw) *	54	72	117	166.5	234
ESP Dry Air (Pa)	250	250	250	250	500
Power supply	400V/3ph/50Hz	400V/3ph/50Hz	400V/3ph/50Hz	400V/3ph/50Hz	400V/3ph/50Hz
Max. Electric Power (Kw)/ Current (Amps)	56.7Kw/102A	75Kw/134A	122Kw/219A	172.5Kw/308A	
Casing (internal/External)	(Super Dyma/ PU1")	(Super Dyma/ PU1")	(Super Dyma/ PU1")	(Super Dyma/ PU1")	(Super Dyma/ PU1")
Aluminum Profile	Non TB/ TB	Non TB/ TB	Non TB/ TB	Non TB/ TB	Non TB/ TB
Dimension (WxLxH) mm	1700x2000x1700	1700x2000x2000	2000x2400x2000	2300x2800x2300	2800x3400x2800
Weight (Kgs)	480	530	720	980	1500

*heater temp based on zero degree of Celsius

**Casing made from SS 304 (Option)

Remarks: Dimension and weight are estimation.

FAN Brand: Kruger fan/ ebm past/Ziehl Abegg /Ruck

Electrics: Mitsubishi/ABB/Omron/Schnider.

All units have Humidity controller with sensor

Some Customers from us



พิพิธภัณฑ์ศิริราช
SIRIRAJ MUSEUM

