



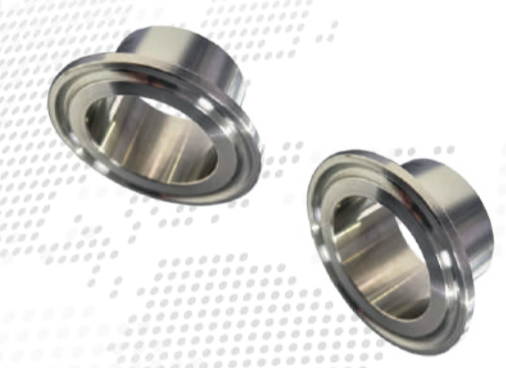
FERRULE COMPLETE SET (Silicone)
เฟอริลส์ชุดสมบูรณ์ ซีต (ยางซิลิโคน)

Item code		Size and Diameter		
Stainless Steel 304	Stainless Steel 316	Standard Size	mm	Inch
FRCSSIW4-NA-STD-050	FRCSSIW5-NA-STD-050	DN15	12.7	1/2"
FRCSSIW4-NA-STD-075	FRCSSIW5-NA-STD-075	DN20	19.0	3/4"
FRCSSIW4-NA-STD-100	FRCSSIW5-NA-STD-100	DN25	25.4	1"
FRCSSIW4-NA-STD-150	FRCSSIW5-NA-STD-150	DN40	31.7	1-1/2"
FRCSSIW4-NA-STD-200	FRCSSIW5-NA-STD-200	DN50	38.1	2"
FRCSSIW4-NA-STD-250	FRCSSIW5-NA-STD-250	DN65	50.8	2-1/2"
FRCSSIW4-NA-STD-300	FRCSSIW5-NA-STD-300	DN80	72.2	3"
FRCSSIW4-NA-STD-400	FRCSSIW5-NA-STD-400	DN100	101.6	4"



TRI CAMP
ไตรแคมป์

Item code		Size and Diameter		
Stainless Steel 304	Standard Size	mm	Inch	
TCSGNAW4-NA-STD-075	DN15, DN20	12.7, 19	1/2", 3/4"	
TCSGNAW4-NA-STD-150	DN25, DN40	25.4, 31.7	1", 1-1/2"	
TCSGNAW4-NA-STD-200	DN50	38.1	2"	
TCSGNAW4-NA-STD-250	DN65	50.8	2-1/2"	
TCSGNAW4-NA-STD-300	DN80	63.5	3"	
TCSGNAW4-NA-STD-400	DN100	76.2	4"	



FERRULE
เฟอริลส์

Item code		Size and Diameter		
Stainless Steel 304	Stainless Steel 316	Standard Size	mm	Inch
FRSGNAW4-NA-STD-050	FRSGNAW5-NA-STD-050	DN15	12.7	1/2"
FRSGNAW4-NA-STD-075	FRSGNAW5-NA-STD-075	DN20	19.0	3/4"
FRSGNAW4-NA-STD-100	FRSGNAW5-NA-STD-100	DN25	25.4	1"
FRSGNAW4-NA-STD-150	FRSGNAW5-NA-STD-150	DN40	38.1	1-1/2"
FRSGNAW4-NA-STD-200	FRSGNAW5-NA-STD-200	DN50	50.8	2"
FRSGNAW4-NA-STD-250	FRSGNAW5-NA-STD-250	DN65	63.5	2-1/2"
FRSGNAW4-NA-STD-300	FRSGNAW5-NA-STD-300	DN80	72.2	3"
FRSGNAW4-NA-STD-400	FRSGNAW5-NA-STD-400	DN100	101.6	4"



Gasket
ปะเก็น

Item code		Size and Diameter		
Teflon	Silicone	Standard Size	mm	Inch
GKSGTFFLNA-STD-050	GKSGSISLNA-STD-050	DN15	12.7	1/2"
GKSGTFFLNA-STD-075	GKSGSISLNA-STD-075	DN20	19.0	3/4"
GKSGTFFLNA-STD-100	GKSGSISLNA-STD-100	DN25	25.4	1"
GKSGTFFLNA-STD-150	GKSGSISLNA-STD-150	DN40	38.1	1-1/2"
GKSGTFFLNA-STD-200	GKSGSISLNA-STD-200	DN50	50.8	2"
GKSGTFFLNA-STD-250	GKSGSISLNA-STD-250	DN65	63.5	2-1/2"
GKSGTFFLNA-STD-300	GKSGSISLNA-STD-300	DN80	72.2	3"
GKSGTFFLNA-STD-400	GKSGSISLNA-STD-400	DN100	101.6	4"

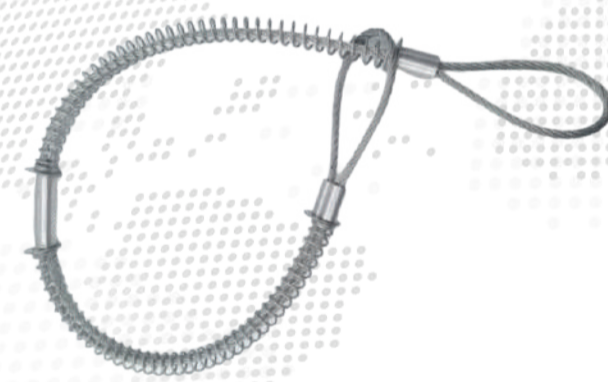


DOUBLE BOLT CLAMP
แคลมป์รัดท่อลม

Item	Size	mm	inch
DBCMAW1-6W-STD-022	22	20-22	21/32" - 7/8"
DBCMAW1-6Y-STD-029	29	22-29	7/8" - 1-9/64"
DBCMAW1-6W-STD-034	34	29-34	1-5/16" - 1-10/32"
DBCMAW1-6W-STD-040	40	34-40	1-7/16" - 1-9/16"
DBCMAW1-6W-STD-049	49	40-49	1-5/8" - 1-15/16"
DBCMAW1-6Y-STD-060	60	49-60	1-7/8" - 2-3/8"
DBCMAW1-6W-STD-076	76	60-76	2-3/8" - 3-7/16"
DBCMAW1-6W-STD-094	94	76-94	2-3/8" - 3-1/64"
DBCMAW1-6Y-STD-115	115	94-115	3-3/4" - 4-1/2"
DBCMAW1-6W-STD-100	400	90-100	3-1/2" - 4"
DBCMAW1-6W-STD-125	525	100-125	4-1/16" - 5"
DBCMAW1-6W-STD-150	550	125-150	5" - 5-1/2"
DBCMAW1-6W-STD-175	675	150-175	6-1/8" - 6-7/8"
DBCMAW1-6W-STD-200	769	175-200	6-15/16" - 7-5/8"
DBCMAW1-6W-STD-225	818	200-225	7-11/16" - 8-3/16"
DBCMAW1-6W-STD-250	988	225-250	8-15/16" - 9-7/8"
DBCMAW1-6W-STD-300	1,126	250-300	9-15/16" - 11-3/8"
DBCMAW1-6W-STD-350	1,275	300-350	11-3/16" - 13"

PVC LAY FLAT HOSE

Item	Size	Working pressure (bar)	I.D.xO.D. (mm)	Length m/roll
LFHONAPVCNA-STD-150	1-1/2"	5	40x42.2	100
LFHONAPVCNA-STD-200	2"	4	53x55.2	100
LFHONAPVCNA-STD-250	2-1/2"	4	65x67.2	100
LFHONAPVCNA-STD-300	3"	4	77x79.2	100
LFHONAPVCNA-STD-400	4"	4	103x105.5	100
LFHONAPVCNA-STD-500	5"	4	127.5x130.1	100
LFHONAPVCNA-STD-600	6"	3	154x156.6	100
LFHONAPVCNA-STD-800	8"	3	204x207.6	100



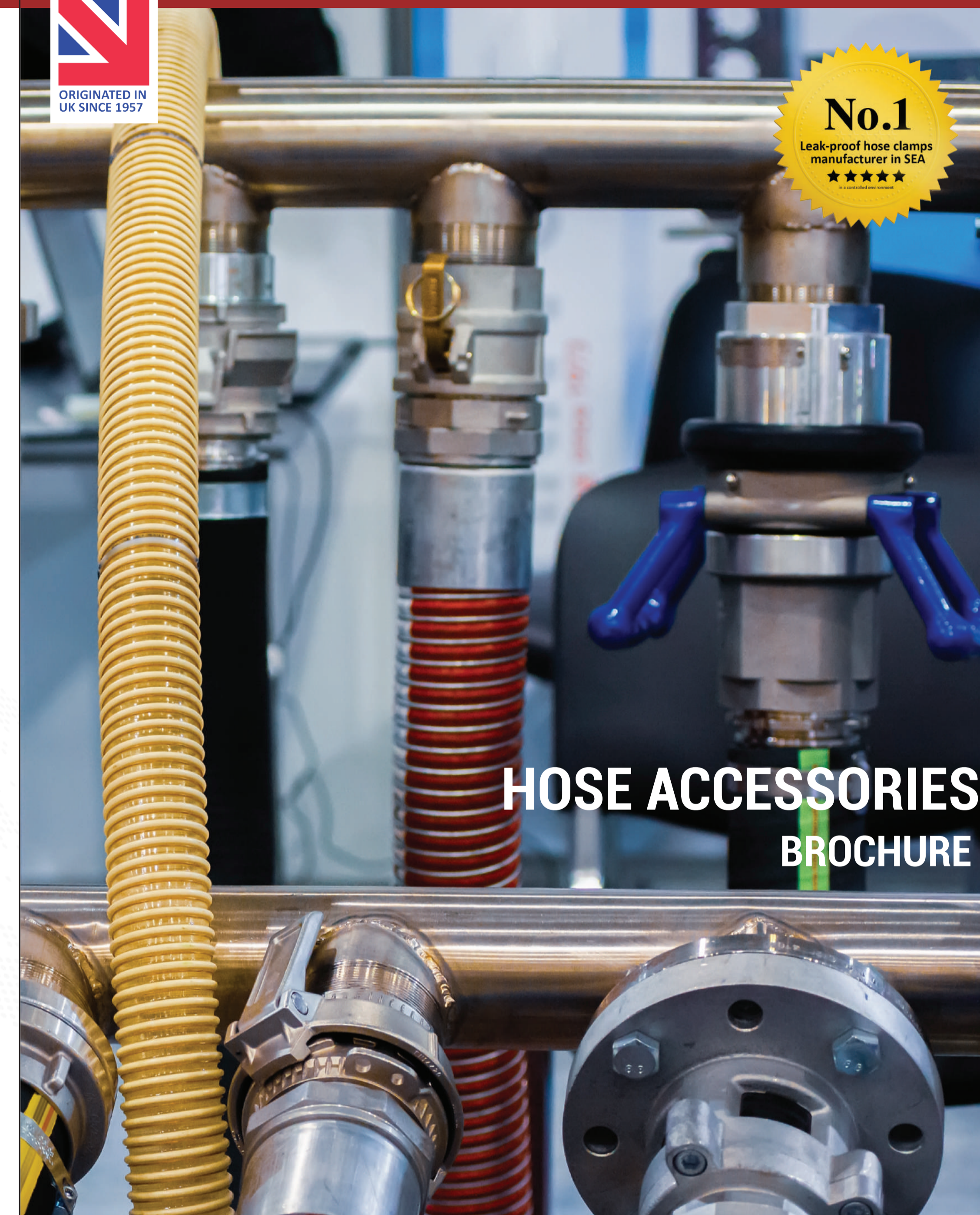
WHIP CHECK SLING
สลิงกันสับ

Item code สลิงกันสับ	Size (ความยาวของสลิงกันสับ)	For pipe size (ขนาดของท่อลม)	Length (mm) (ความยาวรวมของสลิง)
WCSCNAW1-6W-STD-022	1/8"	1/2" - 1.1/4"	22
WCSCNAW1-6W-STD-024	3/16"	1/2" - 1.1/4"	24
WCSCNAW1-6W-STD-032	1/4"	1.1/2" - 2.1/2"	32
WCSCNAW1-6W-STD-038	1/4"	1 1/2" - 3"	38



SPIRAL DOUBLE WIRE CLAMP

Item code	Size
DBWRNAW1-6W-STD-150	1-1/2"
DBWRNAW1-6W-STD-200	2"
DBWRNAW1-6W-STD-250	2 1/2"
DBWRNAW1-6W-STD-300	3"
DBWRNAW1-6W-STD-350	3 1/2"
DBWRNAW1-6W-STD-400	4"
DBWRNAW1-6W-STD-500	5"
DBWRNAW1-6W-STD-600	6"
DBWRNAW1-6W-STD-800	8"
DBWRNAW1-6W-STD-10i	10"
DBWRNAW1-6W-STD-12i	12"



HOSE ACCESSORIES BROCHURE

