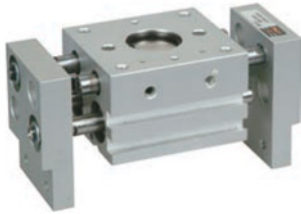


Broad air gripper(Parallel switch type)



- * Long finger stroke, suitable for large objects
- * Double piston design can increase the maintain power
- * Using tooth rod operation make finger open mean while close
- * Using special seal, good dust-proof

Ordering Code

Parallel switch type:MHL2— 16 D 10

Bore _____
 10—φ 10mm
 16—φ 16mm
 20—φ 20mm
 25—φ 25mm
 32—φ 32mm
 40—φ 40mm

Finger Open/Close Stroke _____

mark	φ 10	φ 16	φ 20	φ 25	φ 32	φ 40
within mark	20	30	40	50	70	100
1	40	60	80	100	120	160
2	60	80	100	120	160	200

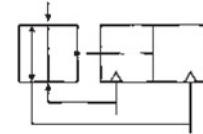
Specification

Bore(mm)	10	16	20	25	32	40
Medium	Air					
Action	Double acting					
Max Operating pressure Mpa	0.6{6.1}					
Min Operating pressure Mpa	0.1{1.0}					
Environment temperature	-10~60°C(No Freeze)					
Repeat precision(mm)	±0.1mm					
1) RetentivityN{Kgf}	14{1.4}	45{4.6}	74{7.5}	131{13.4}	228{23.4}	396{40.4}
Pipe Size	M5×0.8				Rc(PT)1/8	

Note 1) 0.5MPa{5.1kgf/cm²} pressure, and the distance of maintain
 40mm(φ 10 ~ φ 25) 80mm(φ 32 / φ 40)

Ordering Code

- 1) Bore: φ 16, Stroke 30mm
Code: MHL2-16D
- 2) Bore: φ 25, Stroke 120mm
Code: MHL2-25D2

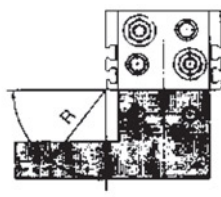
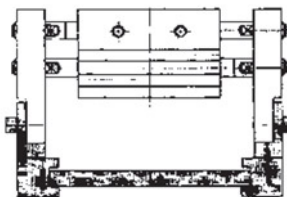
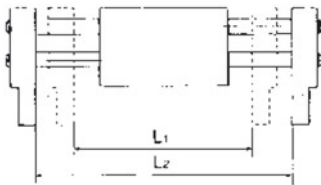


Stroke/Magnet switch (For choose)

Bore(mm)	Channel Mounting
10	
16	D-Y59AL
20	D-Y59BL
25	D-Y69AL
32	D-Y69BL
40	

*Magnet switch specification refer to magnet switch series.

Stroke/Weight List

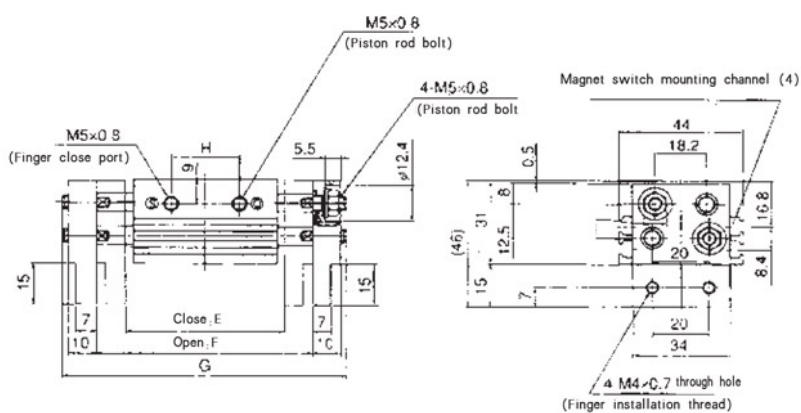
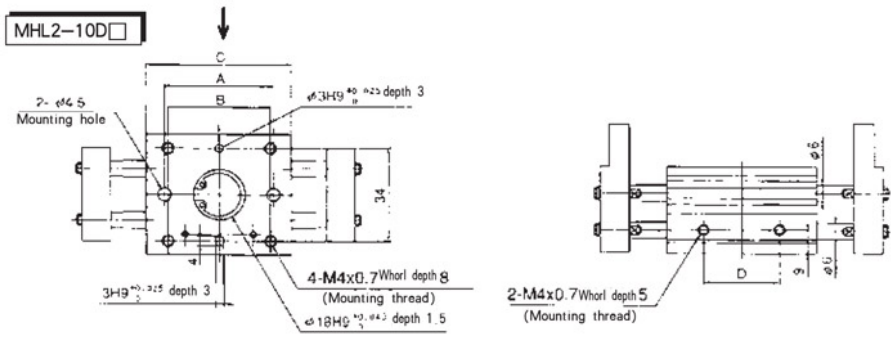


The distance of maintain power(mm)

Type	Bore (mm)	Highest operating frequency c.p.m	Open/Close Stroke mm(L2-L1)	Width(close) mm(L1)	Width(open) mm(L2)	Weight g
MHL2-10D	10	60	20	56	76	280
MHL2-10D1		40	40	78	118	345
MHL2-10D2		40	60	96	156	425
MHL2-16D	16	60	30	68	98	585
MHL2-16D1		40	60	110	170	795
MHL2-16D2		40	80	130	210	935
MHL2-20D	20	60	40	82	122	1025
MHL2-20D1		40	80	142	222	1495
MHL2-20D2		40	100	162	262	1690
MHL2-25D	25	60	50	100	150	1690
MHL2-25D1		40	100	182	282	2560
MHL2-25D2		40	120	200	320	2775
MHL2-32D	32	30	70	150	220	2905
MHL2-32D1		20	120	198	318	3820
MHL2-32D2		20	160	242	402	4655
MHL2-40D	40	30	100	188	288	5270
MHL2-40D1		20	160	246	406	6830
MHL2-40D2		20	200	286	486	7905

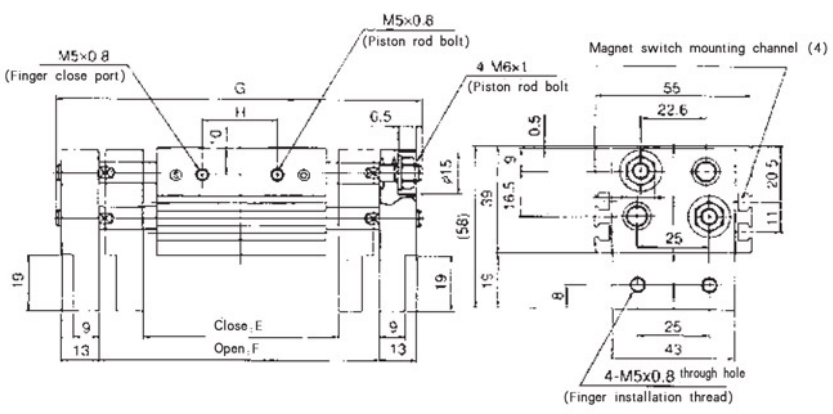
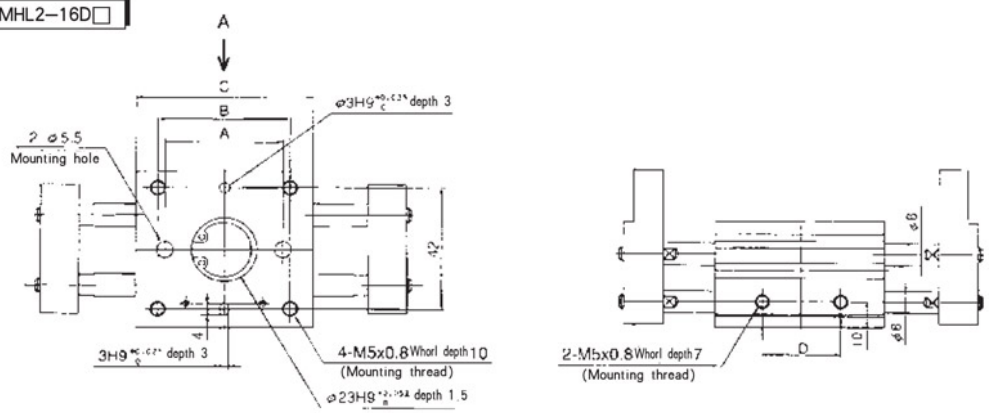
Broad air gripper (Parallel switch type)

Figure Dimension (mm)



Type	A	B	C	D	E	F	G	H
MHL2-10D	38	36	51	26	56	76	100	24
MHL2-10D1	54	52	67	42	78	118	142	39
MHL2-10D2	72	70	85	60	96	156	180	57

MHL2-16D



Type	A	B	C	D	E	F	G	H
MHL2-16D	40	45	60	28	68	98	128	26
MHL2-16D1	70	75	90	58	110	170	200	50
MHL2-16D2	90	95	110	78	130	210	240	70

